

**Алматы** (7273)495-231  
**Ангарск** (3955)60-70-56  
**Архангельск** (8182)63-90-72  
**Астрахань** (8512)99-46-04  
**Барнаул** (3852)73-04-60  
**Белгород** (4722)40-23-64  
**Благовещенск** (4162)22-76-07  
**Брянск** (4832)59-03-52  
**Владивосток** (423)249-28-31  
**Владикавказ** (8672)28-90-48  
**Владимир** (4922)49-43-18  
**Волгоград** (844)278-03-48  
**Вологда** (8172)26-41-59  
**Воронеж** (473)204-51-73  
**Екатеринбург** (343)384-55-89

**Иваново** (4932)77-34-06  
**Ижевск** (3412)26-03-58  
**Иркутск** (395)279-98-46  
**Казань** (843)206-01-48  
**Калининград** (4012)72-03-81  
**Калуга** (4842)92-23-67  
**Кемерово** (3842)65-04-62  
**Киров** (8332)68-02-04  
**Коломна** (4966)23-41-49  
**Кострома** (4942)77-07-48  
**Краснодар** (861)203-40-90  
**Красноярск** (391)204-63-61  
**Курск** (4712)77-13-04  
**Курган** (3522)50-90-47  
**Липецк** (4742)52-20-81

**Магнитогорск** (3519)55-03-13  
**Москва** (495)268-04-70  
**Мурманск** (8152)59-64-93  
**Набережные Челны** (8552)20-53-41  
**Нижний Новгород** (831)429-08-12  
**Новокузнецк** (3843)20-46-81  
**Ноябрьск** (3496)41-32-12  
**Новосибирск** (383)227-86-73  
**Омск** (3812)21-46-40  
**Орел** (4862)44-53-42  
**Оренбург** (3532)37-68-04  
**Пенза** (8412)22-31-16  
**Петрозаводск** (8142)55-98-37  
**Псков** (8112)59-10-37  
**Пермь** (342)205-81-47

**Рязань** (4912)46-61-64  
**Самара** (846)206-03-16  
**Санкт-Петербург** (812)309-46-40  
**Саратов** (845)249-38-78  
**Севастополь** (8692)22-31-93  
**Саранск** (8342)22-96-24  
**Симферополь** (3652)67-13-56  
**Смоленск** (4812)29-41-54  
**Сочи** (862)225-72-31  
**Ставрополь** (8652)20-65-13  
**Сургут** (3462)77-98-35  
**Сыктывкар** (8212)25-95-17  
**Тамбов** (4752)50-40-97  
**Тверь** (4822)63-31-35

**Тольятти** (8482)63-91-07  
**Томск** (3822)98-41-53  
**Тула** (4872)33-79-87  
**Тюмень** (3452)66-21-18  
**Ульяновск** (8422)24-23-59  
**Улан-Удэ** (3012)59-97-51  
**Уфа** (347)229-48-12  
**Хабаровск** (4212)92-98-04  
**Чебоксары** (8352)28-53-07  
**Челябинск** (351)202-03-61  
**Череповец** (8202)49-02-64  
**Чита** (3022)38-34-83  
**Якутск** (4112)23-90-97  
**Ярославль** (4852)69-52-93

Россия +7(495)268-04-70

Казахстан +7(7172)727-132

Киргизия +996(312)96-26-47

<https://billiani.nt-rt.ru/> || [bnm@nt-rt.ru](mailto:bnm@nt-rt.ru)



**billiani**  
1911

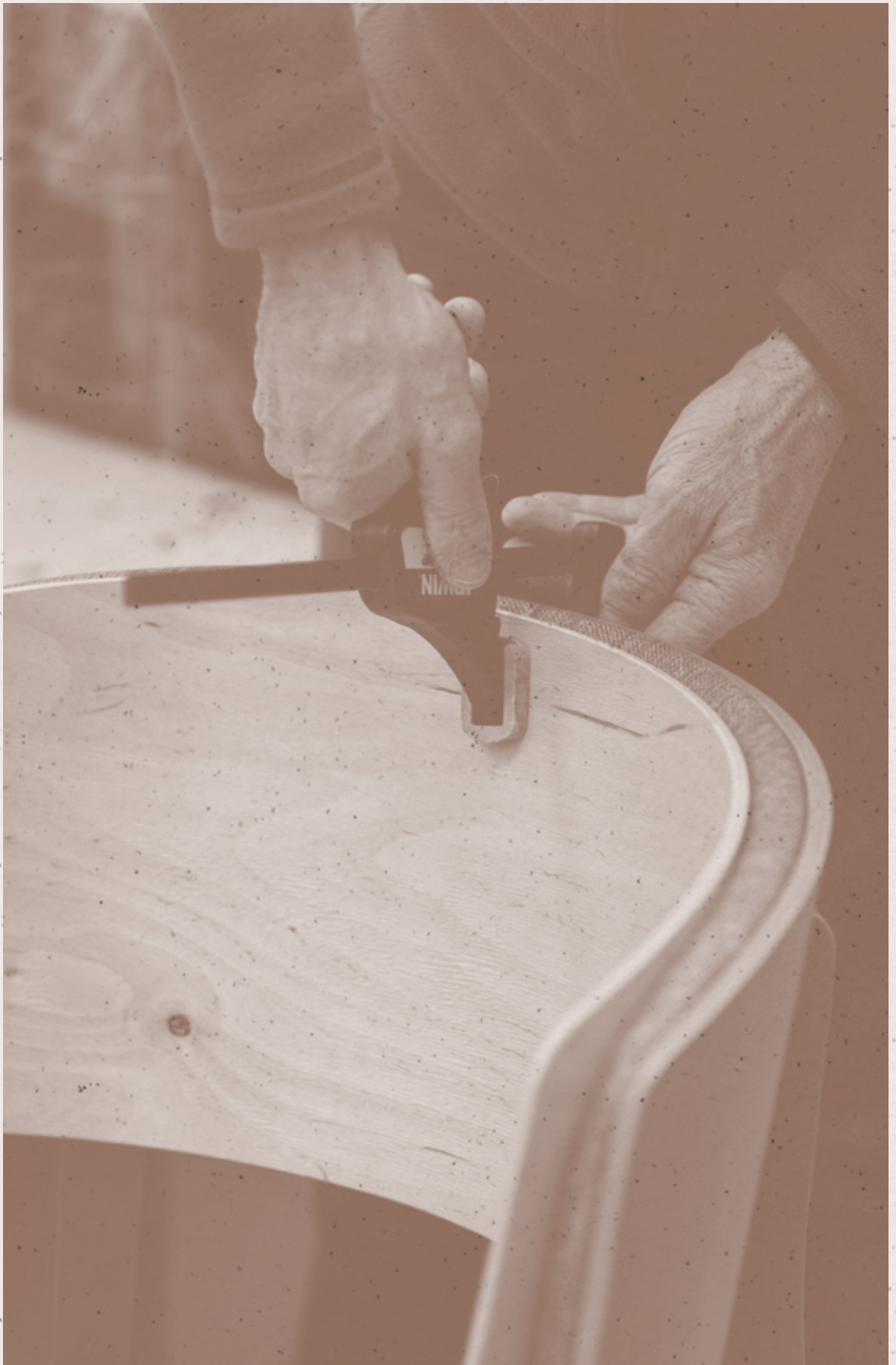
## Billiani 1911

Billiani è un'azienda italiana che da più di un secolo produce sedie in legno. Si trova a Manzano, nel cuore di un distretto che sulla sedia ha costruito la sua fortuna e che vanta tuttora una filiera produttiva unica al mondo. Di questa cultura le sedie Billiani portano il segno e raccontano la storia. Il segno è la capacità di lavorare il legno, che si esprime attraverso un'estetica fatta di curvature, incastri e torniture più che di parole. La storia è la tradizione su cui Billiani s'innesta nel 1911 attraversando diverse età, senza paura di cambiare, prima di arrivare a quella attuale: l'età del design.



### Billiani 1911

Billiani has been making chairs in Italy for well over a hundred years. The company is located in Manzano, in the heart of a district that has built its fortune based on chair manufacturing and which still boasts one of the world's unique production hubs. This culture is embedded in Billiani seating, as a storyteller. The sign is the ability to work wood, which is expressed through an aesthetic made of curves, joints and turnings rather than words. The story is the tradition that Billiani grafted onto in 1911, going through different ages, without fear of changing, before arriving at today's age of design.



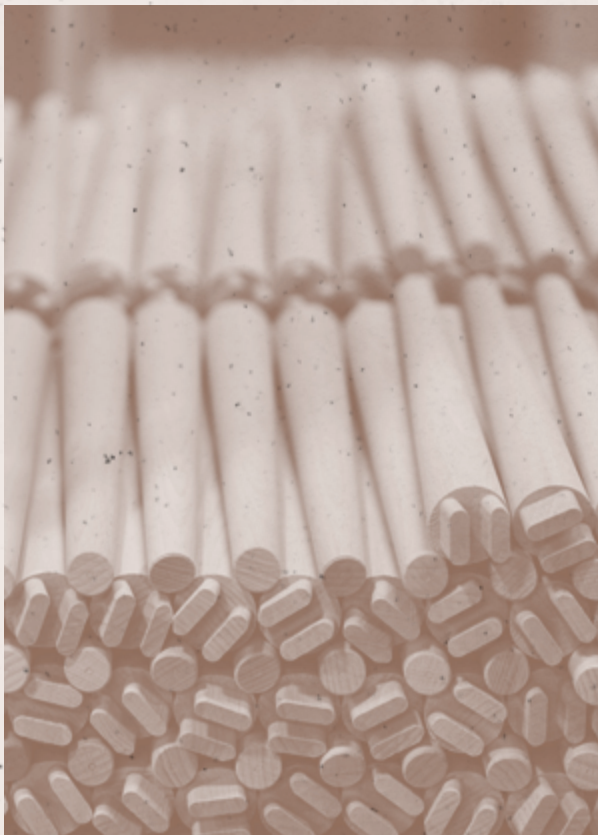
## Produzione

Billiani produce al 100% all'interno del triangolo della sedia, un territorio di piccoli laboratori specializzati dove la cultura del legno ha radici profonde. Una filiera d'eccellenza fatta di aziende artigiane dalla storia secolare, ciascuna specializzata in una fase del lavoro. A tenere in vita questo tessuto produttivo, che ha rischiato di perdersi sulla spinta della delocalizzazione che ha svuotato i laboratori e ne ha disperso le capacità, sono anche i tecnici di Billiani. Ciascuno di loro segue i prodotti passo per passo: una garanzia di qualità ma anche un investimento sulla filiera, perché ogni innovazione arricchisce il know-how di tutto il distretto. È così che il made in Italy di Billiani acquista un valore che va oltre il prodotto in sé e diventa espressione di un patrimonio culturale e manifatturiero condiviso, oltre che di un'impresa di famiglia.



## Contract

Flessibilità produttiva e rapidità di risposta sono le prime caratteristiche richieste dal settore contract, e in questo senso gli anni delle grandi commesse internazionali sono stati per Billiani un'ottima scuola. Oggi il contract è molto di più: è personalizzazione, capacità di declinare un concept in una serie completa di prodotti, cura del dettaglio, robustezza. Il lungo elenco di realizzazioni di Billiani racconta tutto questo, nei contesti più diversi in tutto il mondo, dai bistrot ai ristoranti, dagli hotel agli spazi di lavoro, con uno stile che rimane sempre riconoscibile pur essendo progettato ogni volta ad hoc.



### Production

Production flexibility and speed of response are the first characteristics demanded by the contract sector, and in this sense, the years of the great international orders have been an excellent school for Billiani. Today the contract market is much more: it is customisation, ability to run a concept through a complete series of products, attention to detail, robustness. Billiani's long list of creations tells all this, in the most diverse contexts around the world, from bistros to restaurants, from hotels to workspaces, always with a style that remains recognisable despite being individually designed each time.

## Collections

P. 056

**Frisée**Sedie, poltroncine, sgabelli  
/ Chairs, armchairs, stools

P. 064

**Doll**Sedie, poltroncine, lounge, sgabelli  
/ Chairs, armchairs, lounge chairs, stools**Doll**

Tavoli / Tables

P. 082

**Layer**Poltroncine, lounge, sgabelli  
/ Armchairs, lounge chairs, stools

P. 090

**Fitt Classic**Poltroncine, sgabelli  
/ Armchairs, stools

P. 096

**Fitt Hug**Poltroncine, sgabelli  
/ Armchairs, stools

P. 102

**White**Sedie, sgabelli  
/ Chairs, stools

P. 110

**Marimba**Sedie, lounge, sgabelli  
/ Chairs, lounge chairs, stools

P. 118

**Fratina**Sedie, poltroncine  
/ Chairs, armchairs

P. 126

**Blazer**Sedie, poltroncine, sgabelli  
/ Chairs, armchairs, stools

P. 136

**Vincent v. G.**Sedie, poltroncine, sgabelli  
/ Chairs, armchairs, stools

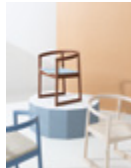
P. 142

**Gradisca**Sedie, sgabelli  
/ Chairs, stools

P. 152

**Tracy**Sedie, sgabelli  
/ Chairs, stools

P. 158

**Nordica**

Poltroncine / Armchairs

P. 162

**Load**Sedie, lounge, sgabelli  
/ Chairs, lounge chairs, stools

P. 172

**Take**

Sedie / Chairs

P. 178

**Aragosta**Sedie, lounge  
/ Chairs, lounge chairs

P. 186

**Aragosta**

Tavoli / Tables

P. 186

**Toccata & Fuga**Sedie, poltroncine  
/ Chairs, armchairs

P. 192

**W.**Sedie, poltroncine, lounge, sgabelli  
/ Chairs, armchairs, lounge chairs, stools

P. 200

**Drum**Sedie, lounge, sgabelli  
/ Chairs, lounge chairs, stools

P. 210

**Drum**

Tavoli / Tables

P. 210

**Green**

Sedie / Chairs

P. 214

**Cafè**Sedie, poltroncine, sgabelli  
/ Chairs, armchairs, stools

P. 222



**Aloe**  
Sedie, sgabelli  
/ Chairs, stools

P. 228



**Foglia**  
Sedie, sgabelli  
/ Chairs, stools

P. 232



**Puccio**  
Sgabelli, panchette  
/ Stools, benches



**Puccio**  
Tavoli / Tables

P. 242



**Sey**  
Poltroncine, lounge  
/ Armchairs, lounge chairs

**Imbottiti**  
/Soft

P. 250



**Corolla**  
Poltroncine, lounge, divani  
/ Armchairs, lounge chairs, sofas

P. 262



**Spy**  
Sedie, poltroncine, lounge, divani,  
dormeuse / Chairs, armchairs, lounge  
chairs, sofas, dormeuse

P. 278



**Hippy**  
Sedie, poltroncine, lounge, sgabelli  
/ Chairs, armchairs, lounge chairs, stools

P. 288



**Croissant**  
Sedie, poltroncine, lounge, panchette,  
divani, sgabelli / Chairs, armchairs, lounge  
chairs, benches, sofas, stools



**Croissant**  
Tavoli / Tables



**Spy**  
Tavoli / Tables

P. 302



**Grapevine**  
Tavoli / Tables

P. 308



**Lilliput**  
Tavoli / Tables

P. 312



**Tango**  
Appendiabiti / Coat-stands

**Complementi**  
/ Extras

P. 316



**Marcel**  
Tavoli / Tables

Cristina Celestino, Marco Ferreri, Emilio Nanni, Werther Toffoloni, Victor Carrasco, Francesco Faccin, Fabrizio Gallinaro, Michael Geldmacher, Harri Koskinen, Paul Loebach, Egidio Panzera, Timo Ripatti, Studiocharlie, Studioventotto, Kazuhide Takahama.

Cristina Celestino



Nasce a Pordenone nel 1980. Nel 2005, dopo aver concluso il percorso universitario alla facoltà di Architettura IUAV di Venezia, collabora con prestigiosi studi di progettazione e dedica la sua attenzione all'architettura d'interni e al design. Nel 2010 si trasferisce a Milano, dove fonda il suo studio e il brand Attico Design. Onorata con numerosi riconoscimenti a livello internazionale, nel 2019 Billiani le affida la direzione artistica dell'azienda, per raccontare un nuovo capitolo in continuità con la storia, i materiali e le lavorazioni tipiche del territorio.

Born in Pordenone in 1980, she graduated in Architecture from IUAV Venice University. In 2005 she started to collaborate with prestigious design studios, focusing on interior and product design. In 2010 she

moved to Milan, where she founded her studio and her brand Attico Design. She has received numerous awards and international recognition. With the aim of starting a new entrepreneurial chapter, in continuity with its history, materials and processes typical of the local territory, in 2019 Billiani entrusted Celestino with the artistic direction of the company.

Frisée p. 056  
Corolla p. 250

Marco Ferreri



Nasce nel 1958 a Imperia. Dal 1984 lavora e vive a Milano. La sua ricerca progettuale spazia dal disegno industriale alla grafica, dall'architettura all'allestimento. I suoi oggetti sono raccolti in importanti Musei di tutto il mondo, tra cui il MoMA e in prestigiose

collezioni private. Nel 2010 la Triennale di Milano ha dedicato al suo lavoro un'importante mostra monografica.

Born in 1958 in Imperia, Marco Ferreri has lived and worked in Milan since 1984. His project research encompasses industrial design and graphics, architecture and furnishings. His works are on display in major design collections worldwide including at MoMA, and in prestigious private collections. In 2010, the Milan Triennale dedicated an exclusive display to his work.

Foglia p. 228  
Nordica p. 158

Emilio Nanni



Nasce a Bazzano, Bologna, nel 1955. Architetto, designer, artista. Le sue opere sono

esposte in numerose mostre personali, i suoi oggetti di design sono presenti in diverse collezioni pubbliche e private sia in Italia che all'estero.

Born in Bazzano, Bologna in 1955. Architect, designer, artist. He has displayed his works at numerous private exhibitions, and his design works are on display in many Italian and international state and private collections.

Blazer p. 126  
Croissant p. 288  
Doll p. 064  
Drum p. 200  
Fratina p. 118  
Hippy p. 278  
Load p. 162  
Marimba p. 110  
Puccio p. 232  
Sey p. 242  
Spy p. 262  
Take p. 172  
Tracy p. 152



Werther Toffoloni



Nasce a Udine nel 1930 e studia a Venezia. Insegna progettazione industriale e collabora da subito con varie industrie per il design e la consulenza artistica. È una matita feconda e, senza dubbio, uno dei protagonisti del design industriale italiano. Creatività, conoscenza dei materiali e grande attenzione alla funzionalità caratterizzano tutto il suo pregevole lavoro. Muore nel 2017, a 86 anni.

Werther Toffoloni was born in Udine in 1930. After having studied in Venice, he taught industrial design and quickly started working in various design sectors and as an artistic consultant. He was quite prolific and undoubtedly a major player in Italian industrial design. Creativity, a thorough knowledge of materials, and a great eye for functionality were the hallmarks of his corpus of work. He died in 2017, at the age of 86.

- Aloe p. 222
- Cafè p. 214
- Gradisca p. 142
- Vincent v. G. p. 136

Victor Carrasco



Nato a Valencia, in Spagna, nel 1974, Victor Carrasco si laurea con lode in Ingegneria e disegno industriale presso il Politecnico di Valencia. Si allontana dalle tendenze e le mode passeggero per dedicarsi allo sviluppo e al posizionamento di brand internazionali, grazie all'attenta sensibilità verso i trend futuri e alla passione per la sintesi e per la crescita sostenibile. Carrasco è direttore strategico di Viccarbe e, nel frattempo, collabora con molte aziende note a livello internazionale in qualità di designer industriale. Gli vengono conferiti i premi Prince

Felipe for Business Excellence e German Design Award.

Born in Valencia (Spain) in 1974, Victor Carrasco began his professional career after graduating Cum Laude in Industrial Design Engineering at the Polytechnic University of Valencia. Shying away from trends and fads, he has developed and positioned international brands with remarkable added value, thanks to his passion for synthesis, sustainable growth and his pragmatic vision of the future. Since 2007, he has been combining his position as strategic director of Viccarbe with that of industrial designer for numerous international companies. He was the recipient of the Prince Felipe Award for Business Excellence and the German Design Award.

- Fitt Classic p. 090
- Fitt Hug p. 096

Francesco Faccin



Francesco Faccin nasce a Milano nel 1977. Nel 2003 termina gli studi di disegno industriale e inizia una collaborazione con Enzo Mari. Dal 2004 al 2006 collabora con il liutaio Francesco Rivolta. Lavora come designer indipendente dal 2007 e dal 2009 al 2015 è consulente dello studio di Michele de Lucchi. Collabora con importanti aziende italiane e straniere, viene pubblicato sulle più importanti riviste di tutto il mondo.

Francesco Faccin was born in Milan in 1977. In 2003, after having finished his studies in Industrial Design in Milan, Faccin worked at the Enzo Mari design studio. He started up his career as a freelance designer and collaborated with the lute-maker Francesco Rivolta until 2006. In 2009 he met Michele De Lucchi and since then they worked in mutual collaboration for 5 years. He collaborates with important Italian and international brands. His work has been published in the most important worldwide magazines.

- Green p. 210

Fabrizio Gallinaro



Nasce nel 1966. Si laurea in architettura a Venezia e inizia a progettare accanto al designer Werther Toffoloni, avviando dopo poco la propria attività di industrial designer e architetto a Udine. I suoi lavori sono stati riconosciuti da numerosi premi e segnalazioni internazionali, come il progetto selezionato "Omaggio a Gio Ponti" Morelato 1996, il premio Rima "Young & Design" Milano 2001 e 2002 e molti altri.

Born in 1966, and graduated in architecture from Venice University. He started off in design alongside Werther Toffoloni, soon setting up on his own in Udine as an industrial designer and architect. He has received numerous awards and international recognition for his works, including the selected design "Gift to Gio Ponti" Morelato 1996, the Rima prize "Young & Design" Milan 2001 and 2002, and many others.

- W. p. 192

Michael Geldmacher



Nasce in Germania nel 1968. In collaborazione con Eva Paster fonda Neuland Industrie Design e sviluppa progetti iconici come "Random shelf" e la sedia "Elephant". Dal 2015 progetta in autonomia per importanti aziende di arredo italiane e internazionali, partendo da un concetto di design che ribalta il modo di pensare agli oggetti, trovando la strada che ne rivela la ragione primaria della loro essenza. Riceve molti premi e riconoscimenti.

He was born in Germany in 1968. He founded Neuland Industrie Design with Eva

Paster and developed iconic projects such as "Random Shelf" and the "Elephant" chair. From 2015 he started to design independently for leading Italian and international furniture companies, starting from a design concept that overturned the way of thinking about objects, finding the way that reveals the primary reason for their essence. In his career, he has received many awards and honours.

- Layer p. 082

Harri Koskinen



Nasce nel 1970 in Finlandia. Sviluppa un design senza compromessi, così audace e determinato che lo conduce presto a una fama internazionale. La praticità, uno stile connotante e un approccio concettuale al design sono i suoi tratti distintivi. Le sue opere sono state esposte in mostre in tutto il mondo e moltissimi sono i premi di design conseguiti, tra cui il Compasso d'Oro (2004). Lavora con le migliori aziende di design italiano e internazionale.

Born in Finland in 1970. He developed an uncompromisingly bold and determined design style that soon brought him international fame. Practicality, a connotative style and a conceptual approach to design are the hallmarks of his work. His works have been exhibited all over the world and he has received numerous design awards, including the Compasso d'Oro (2004). He works with the best Italian and international design companies.

- White p. 102

Paul Loebach



Nasce nel 1974 negli USA. Vive e lavora a New York. Alla modellistica digitale e alla tecnologia produttiva associa una profonda analisi della storia dell'arredamento e delle tecniche di lavorazioni tradizionali. È professore alla Rhode Island School of Design. I suoi progetti sono stati pubblicati a livello internazionale.

Born in 1974 in the USA, Paul now lives and works in New York. Along with digital model-making and manufacturing technology, he adds a thorough analysis of the history of furniture and traditional craftsmanship. He lectures at Rhode Island School of Design. His works have been published internationally.

Toccata & Fuga p. 186

Egidio Panzera



Nato a Messina nel 1974. Pensa alla progettazione come la narrazione di un'idea. L'idea nasce dalla ricerca costante dei limiti. La narrazione è ricerca e creatività, svela emozioni, bellezza e funzionalità. Apre il suo studio a Seregno nel 2002 e lavora tra Milano, Mosca e Singapore. È titolare di 10 brevetti d'invenzione.

Egidio Panzera was born in Messina in 1974. He sees design as the telling of an idea. The idea comes up from the constant search for limits. The narration is research and creativity and unveils emotions, beauty and functionality. He opened his studio in Seregno in 2002 and divides his working life between Milan, Moscow and Singapore. He has patented ten inventions.

Grapevine p. 302

Timo Ripatti



Nato in Finlandia nel 1967. Lavora come designer a Helsinki. Il suo linguaggio stilistico è scultoreo e poetico ma altamente funzionale con un tocco scandinavo. È stato premiato in Finlandia come designer di mobili dell'anno 2010. Insegna design del mobile all'Università di Aalto in Helsinki e presso l'Istituto di Design e belle arti di Lahti.

Born in Finland in 1967. He works as a designer in Helsinki. His design language is sculptural and poetic yet highly functional with a Scandinavian touch. He has been awarded as the furniture designer of the year in Finland 2010. He also teaches furniture design in Aalto University in Helsinki and in the Lahti Institute of Design and Fine Arts.

Tango p. 312

Studiocharlie



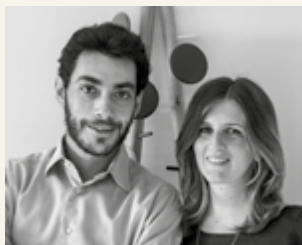
Studiocharlie viene fondato nel 2002 da Gabriele Rigamonti, Carla Scorda e Vittorio Turla. Nel 2004 riceve la Menzione d'Onore al XX Compasso d'Oro ADI con il carattere tipografico Csuni. Disegna per numerose aziende italiane e nel 2011 inizia la collaborazione con Billiani. Nel 2018 vince il Compasso d'Oro ADI con la famiglia di rubinetti Eclipse per Boffi.

Studiocharlie was founded in 2002 by Gabriele Rigamonti, Carla Scorda and Vittorio Turla. They received the Honourable Mention in 2004 for the XX Compasso d'Oro ADI with Csuni typeface project. Studiocharlie works with

numerous Italian companies; in 2011 started the cooperation with Billiani. In 2018, Studiocharlie won the Compasso d'Oro ADI prize with the family of taps Eclipse for Boffi.

Aragosta p. 178

Studioeventotto



Fondato nel 2011 da Elena Albricci, architetto, e Claudio Fiumicelli, designer. Uno studio di progettazione di Milano, con competenze che spaziano dall'interior design alla comunicazione digitale. Partecipa alle edizioni 2014 e 2017 del Salone Satellite, avviando collaborazioni con aziende in Italia e all'estero. Il tratto distintivo dei progetti dello studio è la costante ricerca di un equilibrio tra forma, funzionalità e racconto, traendo ispirazione dalla tradizione del design italiano.

Founded in 2011 by Elena Albricci, architect, and Claudio Fiumicelli, product designer. A design studio based in Milan, whose expertise ranges from the interior design to digital communication. It takes part in the 2014 and 2017 editions of Salone Satellite, starting collaborations with important design firms. The constant search for a balance between form and function is the distinctive feature of the studio's projects, getting inspiration from the tradition of Italian design.

Lilliput p. 308

Kazuhide Takahama



Nasce nel 1930 in Giappone. Nel '57 progetta l'allestimento dello stand giapponese per la XI Triennale di Milano. Qui conosce Dino Gavina, evento che segnerà l'inizio di una prolifica collaborazione e di un'amicizia profonda. Si trasferisce in Italia e progetta per numerose aziende del design italiano, per residenze private e commissioni pubbliche. Tra queste ultime la facciata e la vip lounge dell'aeroporto Guglielmo Marconi e le pensiline delle fermate degli autobus di Bologna. Muore a 80 anni a Bologna.

Born in Japan in 1930. In 1957 he designed the Japanese stand at the XI Triennial in Milan where he got to know Dino Gavina, marking the start of a prolific working relationship and lasting friendship. He relocated to Italy and was commissioned by numerous Italian design houses, both for residential and public projects. Amongst these were the facade and the VIP lounge at Guglielmo Marconi Airport and the shelters at Bologna's bus stops. He died in Bologna aged 80.

Marcel p. 316

# Selected references

007

ALOE	P. 226		HIPPY	P. 286
<ul style="list-style-type: none"> <li>· The Penny Drop</li> <li>· LocHal Library</li> </ul>		Melbourne, AU Tilburg, NL	<ul style="list-style-type: none"> <li>· Nice 2 meet you</li> <li>· Garden City Resort</li> <li>· Vienna House Easy</li> <li>· Vienna House Easy</li> </ul>	Cherkasy, UA Kalamata, GR Coburg, DE Trier, DE
ARAGOSTA	P. 185		LOAD	P. 169
<ul style="list-style-type: none"> <li>· Stand Italgraniti, Cersaie</li> </ul>		Bologna, IT	<ul style="list-style-type: none"> <li>· The Penny Drop</li> <li>· Omma</li> <li>· Fire &amp; Bread</li> <li>· El Tequito</li> <li>· V-ZUG Showroom</li> </ul>	Melbourne, AU Santorini, GR La Roca del Vallès, ES Hamburg, DE Melbourne, AU
BLAZER	P. 135			
<ul style="list-style-type: none"> <li>· The Bay at Mandarin Oriental</li> </ul>		Dubai, UAE		
CAFÈ	P. 221		SEY	P. 248
<ul style="list-style-type: none"> <li>· Wilma Wunder</li> <li>· Residence Itaca</li> </ul>		Düsseldorf, DE Castellammare del Golfo, IT	<ul style="list-style-type: none"> <li>· Sale e sarde</li> <li>· The Studio Hotel</li> <li>· Nour</li> </ul>	Castellaneta, IT Stockholm, SE Sydney, AU
CROISSANT	P. 300		SPY	P. 276
<ul style="list-style-type: none"> <li>· Taiyo Sushi Lounge</li> <li>· The Studio Hotel</li> <li>· Hifen</li> <li>· Bistrot Cento61</li> <li>· Wilma Wunder</li> </ul>		Milan, IT Stockholm, SE Cascais, PT Palermo, IT Düsseldorf, DE	<ul style="list-style-type: none"> <li>· Apartment N08</li> <li>· Bao</li> <li>· Le General</li> <li>· Wilma Wunder</li> <li>· Crowne Plaza</li> </ul>	Amsterdam, NL Kiev, UA Paris, FR Düsseldorf, DE Zurich, CH
DOLL	P. 079		TRACY	P. 157
<ul style="list-style-type: none"> <li>· Jadran</li> <li>· Rù Peruano</li> <li>· Bana</li> <li>· Vienna House Diplomat</li> <li>· The Crux &amp; Co.</li> <li>· Arthotel ANA Momentum</li> <li>· Cork &amp; Bottle</li> </ul>		Tučepi, HR Bari, IT Tel Aviv, IL Prague, CZ Melbourne, AU Göppingen, DE London, UK	<ul style="list-style-type: none"> <li>· Hifen</li> <li>· Stand Italgraniti, Cersaie</li> </ul>	Cascais, PT Bologna, IT
GRADISCA	P. 150		TAKE	P. 177
<ul style="list-style-type: none"> <li>· The Studio Hotel</li> <li>· Bio.it</li> </ul>		Stockholm, SE Milan, IT	<ul style="list-style-type: none"> <li>· Seerestaurant</li> </ul>	Seefeld, CH
FRATINA	P. 124		W.	P. 198
<ul style="list-style-type: none"> <li>· Neni</li> <li>· Hagakure</li> <li>· Spicy NoSpicy</li> <li>· 7 Goats</li> </ul>		Port de Sóller, ES Bari, IT Kiev, UA Mariupol, UA	<ul style="list-style-type: none"> <li>· Vienna House Easy</li> <li>· Bistrot Cento61</li> <li>· Hagakure Noh Samba</li> <li>· Stand Italgraniti, Cersaie</li> <li>· Pushka Apartment</li> <li>· The Traveller</li> </ul>	Trier, DE Palermo, IT Bari, IT Bologna, IT Kiev, UA Amsterdam, NL

# BEYOND

## Sokolski Dom, NUK, Plečnik House ( Ljubljana )

Superare il confine per trovare le radici  
e riscrivere ciascuno il proprio sapere.  
Come Jože Plečnik con l'architettura, Billiani  
con la sedia — a Lubiana, un secolo dopo.

Cross the border to find roots and  
reconstruct each other's knowledge base.  
Like Jože Plečnik with architecture, Billiani with  
the chair — in Ljubljana, just a century later.





010





012





013





015





017



018



019







021







024



025

# VELIKA ČITALNICA





027









030



031



032



033



034







FER - FIK

FRAN - FR

ERJ - ET

FIL - FIS

FRI - FRO

EU - FAG

FIŠ - FL

FRI - FY

AH - FAZ

FO - FOR

G - GAL

IA - FEP

FOS - FRANK

GAM - GAR



039



040



041









045





046



047





050



051



052



053

## SOKOLSKI DOM

Primo complesso sportivo coperto della Slovenia, il Sokolski Dom risale agli anni Venti. Nella facciata, l'architetto Ivan Vurnik rilegge lo stile Art Déco alla luce della tradizione slovena, con elementi decorativi e geometrici. All'interno trovano posto una palestra con soffitto a volte e due atri più piccoli.

› Slovenia's first covered sports complex, the Sokolski Dom dates back to the 1920s. On its facade, architect Ivan Vurnik reinterprets Art Deco style in the light of Slovenian tradition, with decorative and geometric elements. Inside there is a vaulted gym and two smaller atria.

p. 009 – 021



## NUK (NARODNA IN UNIVERZITETNA KNJIŽNICA)

La biblioteca nazionale e universitaria è un edificio monumentale ispirato ai palazzi italiani e alla biblioteca Medicea Laurenziana di Firenze. Nel progettare il palazzo della conoscenza slovena, negli anni Trenta, Jože Plečnik cercò spunti e risposte nell'antico per creare un'estetica nuova, non ripiegata sulla tradizione.

› The national and university library is a monumental building inspired by Italian architecture and the Medicean Laurenziana library in Florence. In designing this Slovenian palace of knowledge in the 1930s, Jože Plečnik sought ideas and answers in the ancient world to create a new aesthetic, not focused on tradition.

p. 022 – 041



## PLEČNIK HOUSE

“Una torre e un giardino”: è così che Jože Plečnik immaginava la sua casa prima di sapere che, dopo aver vissuto a Vienna e Praga, nel 1921 sarebbe tornato per sempre nella sua città. La casa dell'architetto è ancora come allora, un luogo intimo che raccoglie i frammenti della sua poetica e il desiderio di ritrovare le radici primarie di un'identità.



› “A tower and a garden”: this is how Jože Plečnik imagined his home before knowing that, after living in Vienna and Prague, in 1921 he would return for good to his city. The architect's house is still as it was then, an intimate place that groups fragments of his poetics and the desire to find the primary roots of an identity.

p. 042 – 053



p. 009, 010

Poltroncine e divano Corolla in faggio, imbottiti.  
/ Corolla armchairs and sofa in beechwood, upholstered.

p. 011

Sedia Croissant in faggio, imbottita. Poltroncine Fitt Classic in frassino, con sedili imbottiti. Lounge Corolla in faggio, imbottita. / Croissant chair in beechwood, upholstered. Fitt Classic armchairs in ashwood, with upholstered seats. Corolla lounge chair in beechwood, upholstered.

p. 012, 013

Sedie White in frassino, con sedili in legno e imbottiti. Poltroncine Fitt Classic con strutture in acciaio, scocche in frassino e sedili imbottiti. / White chairs in ashwood, with wooden and upholstered seats. Fitt Classic armchairs with steel frames, ashwood shells and upholstered seats.

p. 014, 015

Sedie White in frassino. Doll sedia in frassino, sgabello e lounge high in faggio. Sgabello e pouf Croissant in faggio, imbottiti. / White chairs in ashwood. Doll chair in ashwood, stool and high-backed lounge chair in beechwood. Croissant stool and pouf in beechwood, upholstered.

p. 016, 017, 018, 019

Layer lounge in frassino, imbottite, e sgabelli in frassino, con sedili in legno e imbottito. Poltroncina Fitt Classic in frassino e poltroncina Fitt Hug in frassino, con sedile imbottito. / Layer lounge chairs in ashwood, upholstered, and stools in ashwood, with wooden and upholstered seats. Fitt Classic armchair in ashwood and Fitt Hug armchair in ashwood, with upholstered seat.

p. 021

Sedie Doll in faggio, con sedili e schienali in legno o imbottiti. / Doll chairs in beechwood, with wooden or upholstered seats and backs.

p. 022, 023

Lounge e sgabello Croissant in faggio, imbottiti. / Croissant lounge chairs and stool in beechwood, upholstered.

p. 024

Poltroncine Croissant in faggio, imbottite. / Croissant armchairs in beechwood, upholstered.

p. 025

Lounge Croissant in faggio, imbottita. / Croissant lounge chair in beechwood, upholstered.

p. 026, 027

Bergère Spy in faggio, imbottita. / Spy bergère in beechwood, upholstered.

p. 029

Spy high lounge in faggio, imbottita. / Spy high-backed lounge chair in beechwood, upholstered.

p. 030, 031

Poltroncine Spy in faggio, imbottite. / Spy armchairs in beechwood, upholstered.

p. 032, 033

Poltroncine Corolla e Spy in faggio, imbottite. / Corolla and Spy armchairs in beechwood, upholstered.

p. 034

Lounge Spy in faggio, imbottita. / Spy lounge chair in beechwood, upholstered.

p. 036, 037, 039

Lounge e divano Spy in faggio, imbottiti. Lounge Corolla in faggio, imbottita. / Spy lounge chair and sofa in beechwood, upholstered. Corolla lounge chair in beechwood, upholstered.

p. 040, 041

Bergère e lounge Corolla in faggio, imbottite. / Corolla bergère and lounge chair in beechwood, upholstered.

p. 042, 045, 046

Sedie Frisée in frassino, con sedili in legno e imbottito. Poltroncine Frisée in faggio, con sedili in legno e imbottito. / Frisée chairs in ashwood, with wooden and upholstered seats. Frisée armchairs in beechwood, with wooden and upholstered seats.

p. 047

Sedia e poltroncina Frisée in faggio. / Frisée chair and armchair in beechwood.

p. 049

Sedia e poltroncina Fratina in frassino, con sedili rivestiti in cordino. / Fratina chair and armchair in ashwood, with seats upholstered in cellulose rope.

p. 050, 051

Poltroncine e lounge Sey con strutture in acciaio e scocche intrecciate in corda. / Sey armchairs and lounge chair with steel frames and shells woven in rope.

p. 052, 053

Sgabelli Puccio in frassino. / Puccio stools in ashwood.

Cat. Sedie, chairs  
Poltroncine, armchairs  
Sgabelli, stools

Frisée è una collezione che associa alla solidità del legno una frivolezza ironica e gioiosa. Il segno morbido e avvolgente di Cristina Celestino esalta la materia e il saper fare di Billiani con colori puri, angoli che si trasformano in curve delicate e gambe che terminano a cipolla. Benché pensata per il contract, Frisée esprime una leggerezza colta e sofisticata che guarda al mondo dell'ebanisteria.

Frisée is a collection that combines the solidity of wood with an ironic and joyful frivolity. Cristina Celestino's soft and enveloping touch exalts Billiani's materials and know-how with pure colours, corners that turn into delicate curves and bulb-end legs. Although designed for the contract market, Frisée expresses a cultured and sophisticated lightness that gives a nod to the world of cabinet making.

Frisée 250 Sedia in faggio laccato  
NCS S 7020 R80B, Frisée 253 Poltroncina  
in frassino sbiancato e Credo 2394

/ Frisée 250 Chair in NCS S 7020 R80B  
lacquered beechwood, Frisée 253 Armchair  
in bleached ashwood and Credo 2394



Frisée 250 Sedia in faggio sbiancato,  
Frisée 252 Poltroncina in faggio  
laccato RAL 5014, Frisée 251 Sedia

in faggio laccato RAL 9017 e Boemian  
2407, Frisée 254 Sgabello in faggio  
laccato RAL 7033,

Frisée 253 Poltroncina in faggio laccato  
RAL 6020 e Soft Unito 0954



Frisée 250 Chair in bleached beechwood,  
Frisée 252 Armchair in RAL 5014 lacquered  
beechwood,

Frisée 251 Chair in RAL 9017 lacquered  
beechwood and Boemian 2407, Frisée 254  
Barstool in RAL 7033 lacquered beechwood,

Frisée 253 Armchair in RAL 6020  
lacquered beechwood and Soft Unito 0954



Frisée 250 Sedia in faggio laccato RAL 3004,  
Frisée 250 Sedia in frassino laccato RAL 7044

/ Frisée 250 Chair in RAL 3004 lacquered  
beechwood, Frisée 250 Chair in RAL 7044  
lacquered ashwood



Frisée 255 Sgabello in faggio sbiancato e  
Boemian 2404, Frisée 254 Sgabello in faggio  
laccato RAL 9017, Frisée 254 Sgabello

in faggio laccato RAL 3004 / Frisée 255  
Barstool in bleached beechwood and  
Boemian 2404, Frisée 254 Barstool in

RAL 9017 lacquered beechwood, Frisée 254  
Barstool in RAL 3004 lacquered beechwood



Frisée 250 Sedia in faggio sbiancato,  
Frisée 251 Sedia in faggio laccato  
RAL 9017 e Boemian 2407

/ Frisée 250 Chair in bleached beechwood,  
Frisée 251 Chair in RAL 9017 lacquered  
beechwood and Boemian 2407







Cat. Sedie, chairs  
Poltroncine, armchairs  
Lounge, lounge chairs  
Sgabelli, stools  
Tavoli, tables

Nella sedia in legno Doll, primo progetto di Emilio Nanni per Billiani, l'essenzialità si esprime con garbo e morbidezza. Merito della sagomatura che fa apparire le gambe più sottili e dei tressi curvati, che alleggeriscono il sedile senza compromettere solidità e comfort. Evolutasi nel tempo in una collezione completa che comprende anche sgabelli, poltroncine, poltrone, tavoli e tavolini, Doll è una sedia camaleontica, capace di cambiare stile al cambiare del contesto grazie alla palette di colori e alla varietà di tessuti disponibili per la versione tappezzata.

The wooden Doll chair, Emilio Nanni's first commissioned design for Billiani, expresses essentiality with grace and softness. This is the result of its slender tapering legs and its curved tresses, which lighten the seat without compromising solidity or comfort. Evolved over time into a complete collection that also includes barstools, arm and lounge chairs, coffee and dining tables, Doll is a real chameleon of a chair, capable of changing style according to any changing context, thanks to the wide range of colourways and upholstery options.



Doll 563 Lounge high in faggio laccato  
NCS S 1070 Y80R e Credo 2281, Doll 557  
Sgabello in faggio laccato RAL 5014,

Doll 552 Sedia in faggio naturale  
e Credo 2285, Doll 751 Tavolino in  
faggio e MDF laccati RAL 5014,

Doll 550 Sedia in faggio laccato RAL 7044



/ Doll 563 High-backed lounge chair in NCS S 1070 Y80R lacquered beechwood and Credo 2281, Doll 557 Barstool in RAL 5014 lacquered beechwood,

Doll 552 Chair in natural beechwood and Credo 2285, Doll 751 Table in RAL 5014 lacquered beechwood and MDF, Doll 550 Chair in RAL 7044 lacquered beechwood



Doll 552 Sedia in faggio laccato RAL 7044 e Credo 2285, Doll 551 Sedie in faggio laccato RAL 7044 e RAL 1027, Credo 2285 e 2282

/ Doll 552 Chair in RAL 7044 lacquered beechwood and Credo 2285, Doll 551 Chairs in RAL 7044 and RAL 1027

lacquered beechwood and Credo 2285 and 2282





Doll 557 Sgabelli in faggio laccato RAL 5014  
e in faggio naturale, Doll 556 Sgabello in  
faggio laccato RAL 7044 e Credo 2282

/ Doll 557 Barstools in RAL 5014 lacquered  
beechwood and natural beechwood, Doll 556  
Barstool in RAL 7044 lacquered beechwood  
and Credo 2282





Doll 563 Lounge high in faggio laccato NCS S 1070 Y80R e Credo 2281, Doll 562 Lounge in faggio naturale e Credo 2284, Doll 751 Tavolino

in faggio e MDF laccati NCS S 1070 Y80R / Doll 563 High-backed lounge chair in NCS S 1070 Y80R lacquered beechwood and Credo 2281,

Doll 562 Lounge chair in natural beechwood and Credo 2284, Doll 751 Table in NCS S 1070 Y80R lacquered beechwood and MDF







## Doll Frassino / Doll Ash



Emilio Nanni rilegge la sedia Doll dieci anni dopo. Nasce così la versione in frassino, caratterizzata dalla crociera. Ancora più sottili sedile e schienale, alleggeriti negli spessori.

Emilio Nanni revisits the Doll chair ten years later. Thus was born the ash version, characterized by its crosspiece. Even thinner seat and back, with reduced thickness.



Doll 553 Sedia in acciaio laccato RAL 7044,  
Doll 750 Tavolo in acciaio laccato RAL 9016  
e MDF laccato NCS S 1070 Y80R, Doll 559

Sedia in acciaio laccato RAL 7044 e Credo  
2285 / Doll 553 Chair in RAL 7044 lacquered  
steel, Doll 750 Table in RAL 9016 lacquered

steel and NCS S 1070 Y80R lacquered MDF,  
Doll 559 Chair in RAL 7044 lacquered steel  
and Credo 2285



Doll 165 Sgabello in acciaio laccato  
RAL 1027 e Credo 2282, Doll 164 Sgabello  
in acciaio laccato RAL 5014

/ Doll 165 Barstool in RAL 1027 lacquered  
steel and Credo 2282, Doll 164 Barstool  
in RAL 5014 lacquered steel



Doll 558 Sedia in acciaio laccato RAL 5014,  
Doll 559 Sedia in acciaio laccato RAL 5014  
e Credo 2284, Doll 554 Sedia in acciaio  
laccato RAL 1027 e Credo 2282

/ Doll 558 Chair in RAL 5014 lacquered steel,  
Doll 559 Chair in RAL 5014 lacquered steel  
and Credo 2284, Doll 554 Chair in RAL 1027  
lacquered steel and Credo 2282

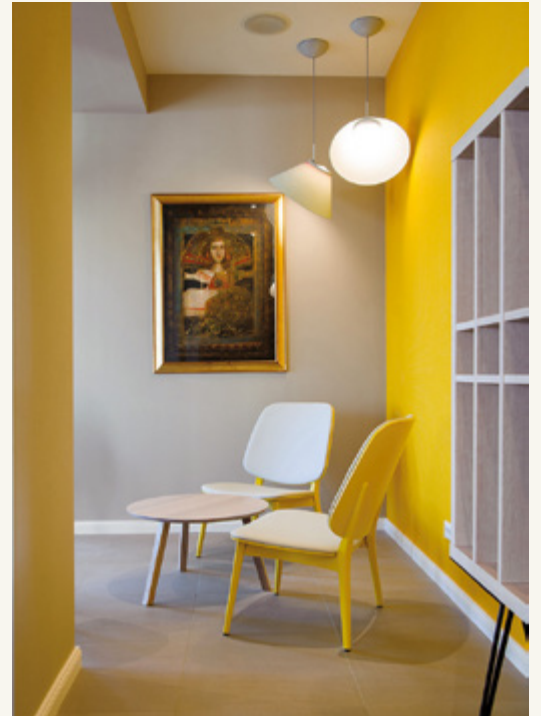




# Realizzazioni/Projects



A



B



C



D

A, B Jadran

Location: Croatia, Category: Hotel

C, D Rù Peruano

Location: Italy, Category: Restaurant

E, F Bana

Location: Israel, Category: Cafe

G Vienna House Diplomat

Location: Czech Republic, Category: Hotel



E



F



G

H	The Crux & Co.	Location: Australia, Category: Restaurant
I	Arthotel ANA Momentum	Location: Germany, Category: Hotel
L, M	Cork & Bottle	Location: United Kingdom, Category: Restaurant



H



I



L



M

Cat. Poltroncine, armchairs  
Lounge, lounge chairs  
Sgabelli, stools

Michael Geldmacher describe Layer come una seduta che sembra esistere da sempre pur essendo nuova – il risultato semplice di un lavoro complesso in cui estetica e capacità costruttiva si compenetrano. Sulle gambe in legno di frassino, che si aprono a compasso, s'innesta una struttura in multistrato che incorpora bracciolo e schienale imbottito, dove disegno e materia sono in continuità. Pensata come poltroncina, Layer si è poi evoluta nelle versioni lounge e sgabello.

Michael Geldmacher describes Layer as an armchair that seems to have existed for ever despite being new – the simple result of a complex work in which aesthetics and constructive capacity intertwine. On the splayed ashwood legs sits a plywood frame that incorporates the padded armrest and back, where design and material are in sync. Designed as an armchair, Layer then evolved to include the lounge and barstool versions.



Layer 090 Dettaglio di poltroncina in frassino laccato RAL 7044 e Boemian 2404, Layer 090 Poltroncina in frassino sbiancato e Boemian 2404, Layer 095 Sgabello in frassino laccato

RAL 7044 e Boemian 2407, Layer 093 Lounge in frassino laccato RAL 7016 e Boemian 2407, Layer 094 Sgabello in frassino laccato RAL 7016



/ Layer 090 Detail of armchair in RAL 7044 lacquered ashwood and Boemian 2404, Layer 090 Armchair in bleached ashwood

and Boemian 2404, Layer 095 Barstool in RAL 7044 lacquered ashwood and Boemian 2407, Layer 093 Lounge chair in RAL 7016

lacquered ashwood and Boemian 2407, Layer 094 Barstool in RAL 7016 lacquered ashwood







Layer 095 Sgabello in frassino tinto tabacco e Brionne 2409, Layer 094 Sgabello in frassino sbiancato, Layer 095 Sgabello in frassino laccato RAL 7044 e Boemian 2407, Layer 094

Sgabello in frassino laccato RAL 7016 / Layer 095 Barstool in tobacco stained ashwood and Brionne 2409, Layer 094 Barstool in bleached ashwood, Layer 095 Barstool in RAL 7044

lacquered ashwood and Boemian 2407, Layer 094 Barstool in RAL 7016 lacquered ashwood



Layer 093 Lounge in frassino sbiancato e  
Boemian 2407, Layer 093 Lounge in frassino  
laccato RAL 7016 e Boemian 2407

/ Layer 093 Lounge chair in bleached  
ashwood and Boemian 2407, Layer 093 Lounge  
chair in RAL 7016 lacquered ashwood and  
Boemian 2407







Cat. Poltroncine, armchairs  
Sgabelli, stools

Creare una seduta al contempo amichevole ed essenziale. Questa l'idea di Victor Carrasco, che per addolcire il tradizionale minimalismo nordico lavora sugli spessori della scocca in multistrato creando un unicum nella collezione Billiani. Da designer curioso a sua volta alla guida di un'azienda produttrice di sedie, Carrasco immagina una grande varietà di fusti e schienali, invitando architetti e progettisti a partecipare alla fase di design di prodotto - in un processo di co-creazione che ha nell'apertura e nella creatività il suo punto di forza.

Creating a chair that is both friendly and essential. This is the idea of Victor Carrasco, who, to soften the traditional Nordic minimalism, has worked on the thickness of the plywood shell to create a one-off within the Billiani collection. As an inquisitive designer who is also at the helm of a chair manufacturing company, Carrasco imagines a large variety of bases, inviting architects and designers to participate in the product design phase - in a co-creation process that has openness and creativity as its strong points.

Fitt Classic 020 Poltroncina in frassino sbiancato, Fitt Classic 030 Poltroncina in frassino laccato RAL 7044 e Twilltwenty 2275

/ Fitt Classic 020 Armchair in bleached ashwood, Fitt Classic 030 Armchair in RAL 7044 lacquered ashwood and Twilltwenty 2275



Fitt Classic 021 Poltroncina in frassino laccato RAL 3012 e Twilltwenty 2275, Fitt Classic 020 Poltroncina in frassino sbiancato, Fitt Classic

028 Sgabello in frassino sbiancato e Twilltwenty 2275 / Fitt Classic 021 Armchair in RAL 3012 lacquered ashwood and Twilltwenty 2275,

Fitt Classic 020 Armchair in bleached ashwood, Fitt Classic 028 Barstool in bleached ashwood and Twilltwenty 2275



Fitt Classic 020 Dettaglio di poltroncina in frassino laccato RAL 3012, Fitt Classic 023 Poltroncina in acciaio e frassino laccati RAL 7044 e Soft Unito 0643

/ Fitt Classic 020 Detail of armchair in RAL 3012 lacquered ashwood, Fitt Classic 023 Armchair in RAL 7044 lacquered steel and ashwood and Soft Unito 0643



Fitt Classic 025 Poltroncina in acciaio laccato NCS S 1020 R90B, frassino laccato RAL 3012 e Soft Unito 0643, Fitt Classic 027 Poltroncina in acciaio laccato RAL 9016, frassino laccato

RAL 7044 e Twilltwenty 2275 / Fitt Classic 025 Armchair in NCS S 1020 R90B lacquered steel, RAL 3012 lacquered ashwood and Soft Unito 0643, Fitt Classic 027 Armchair in RAL 9016

lacquered steel, RAL 7044 lacquered ashwood, and Twilltwenty 2275







Cat. Poltroncine, armchairs  
Sgabelli, stools

Victor Carrasco esplora la fortunata tipologia della serie monoscocca e con Fitt Hug espande il concept della seduta Fitt. In questa nuova interpretazione, la scocca fasciante ha linee nette e decise. Sempre essenziale, si abbina in modo versatile a basi diverse - dalle classiche gambe in legno al fusto girevole - così da adeguarsi a qualsiasi contesto.

Victor Carrasco explores the successful single-shell style of seating, and with Fitt Hug he broadens the concept of the Fitt chair. In this new interpretation, the wrap-around body has clear and decisive lines. Always essential, it combines in a versatile way with different bases - from classically wooden legs to the revolving frame - so as to adapt to any setting.



Fitt Hug 044 Dettaglio di poltroncina  
in frassino laccato NCS S 1020 R90B,  
Fitt Hug 046 Poltroncina in frassino  
sbiancato e Twilltwenty 2275

/ Fitt Hug 044 Detail of armchair in  
NCS S 1020 R90B lacquered ashwood,  
Fitt Hug 046 Armchair in bleached  
ashwood and Twilltwenty 2275



Fitt Hug 050 Poltroncina in acciaio laccato  
NCS S 1020 R90B e frassino laccato RAL 1015,  
Fitt Hug 048 Poltroncina in acciaio e frassino  
laccati RAL 1015 e Soft Unito 2399

/ Fitt Hug 050 Armchair in NCS S 1020 R90B  
lacquered steel and RAL 1015 lacquered  
ashwood, Fitt Hug 048 Armchair in RAL 1015

lacquered steel and ashwood and  
Soft Unito 2399



Fitt Hug 054 Poltroncina in acciaio laccato  
RAL 9016, frassino laccato RAL 1015 e Soft  
Unito 2399

/ Fitt Hug 054 Armchair in RAL 9016 lacquered  
steel, RAL 1015 lacquered ashwood and  
Soft Unito 2399



Fitt Hug 056 Sgabello in frassino tinto  
tabacco, Fitt Hug 044 Poltroncina in frassino  
laccato NCS S 1020 R90B

/ Fitt Hug 056 Barstool in tabacco  
stained ashwood, Fitt Hug 044 Armchair  
in NCS S 1020 R90B lacquered ashwood



Cat. Sedie, chairs  
Sgabelli, stools

È ispirata al design nordico degli anni Sessanta la sedia White, in cui si riconosce tanto l'estetica forte e senza compromessi del suo designer, Harri Koskinen, quanto l'eredità della sedia Green di Billiani, cui somiglia anche nel nome. Entrambe hanno forme generose e gambe spesse quattro centimetri, ma White è ancora più robusta: una sedia dalla presenza rassicurante, per tutti i contesti dove solidità e comodità sono imprescindibili.

The White chair is inspired by sixties Nordic design, in addition to acknowledging both the strong and uncompromising aesthetics of its designer, Harri Koskinen, as well as the legacy of Billiani's Green chair, which it also resembles through the choice of name. Both have generous shapes and four-centimetre thick legs, but White is even more robust: a chair with a reassuring presence, for all contexts where sturdiness and comfort are essential.





White 132 Sedie in frassino sbiancato e tinto  
RAL 7033, Credo 2282 e 2284, White 134  
Sgabello in frassino sbiancato

/ White 132 Chairs in bleached and RAL 7033  
stained ashwood, Credo 2282 and 2284,  
White 134 Barstool in bleached ashwood





White 132 Sedia in frassino sbiancato e tinto  
RAL 7033, Credo 2282 e 2284 , White 130  
Sedia in frassino tinto RAL 7044

/ White 132 Chairs in bleached and RAL 7033  
stained ashwood, Credo 2282 and 2284, White  
130 Chair in RAL 7044 stained ashwood



White 135 Sgabello in frassino tinto RAL 1027 e Credo 2282, White 134 Sgabello in frassino sbiancato

/ White 135 Barstool in RAL 1027 stained ashwood and Credo 2282, White 134 Barstool in bleached ashwood







Cat. Sedie, chairs  
Lounge, lounge chairs  
Sgabelli, stools

Per l'inedita combinazione tra legno e cuoio, Marimba è una novità nella collezione Billiani. Particolare la svasatura del sedile, così come la gamba posteriore, che si allunga e s'inclina leggermente per sostenere lo schienale in cuoio sagomato. Un progetto di Emilio Nanni che ha il carattere di un prodotto di pelletteria e il fascino di un oggetto artigianale. È disponibile anche una versione in feltro.

For the unprecedented combination of wood and leather, Marimba is a novelty in the Billiani collection. Particularly the shaping of the seat, as well as the back legs, which stretch and tilt slightly to support the shaped leather backrest. A project by Emilio Nanni that has the character of something you might find in a leather goods store, combined with the charm of a hand-crafted object. A felt version is also available.





Marimba 114 Lounge in faggio tinto noce e feltro 2470, Marimba 110 Sedia in faggio tinto NCS S 7020 R80B e Pieno Fiore 2463,

Marimba 113 Sgabello in faggio naturale e cuoietto 2340, Marimba 114 Lounge in faggio tinto noce e cuoietto 2335



Marimba 114 Lounge chair in walnut stained  
beechwood and felt 2470, Marimba  
110 Chair in NCS S 7020 R80B stained

beechwood and full-grain leather 2463,  
Marimba 113 Barstool in natural  
beechwood and hide 2340,

Marimba 114 Lounge chair in walnut stained  
beechwood and hide 2335





Marimba 110 e 112 Sedia e sgabello in faggio  
tinto NCS S 7020 R80B e Pieno Fiore 2463,  
Drum 081 Tavolo in faggio tinto noce e laccato

NCS S 7020 R80B / Marimba 110 and 112  
Chair and barstool in NCS S 7020 R80B stained  
beechwood and full-grain leather 2463,

Drum 081 Table in walnut stained beechwood  
and NCS S 7020 R80B lacquered beechwood



Marimba 110 Sedia in faggio tinto RAL 3012 e feltro 2471, Marimba 114 lounge in faggio naturale e feltro 2471, Drum 082 Tavolo in faggio naturale e laccato RAL 3012 / Marimba

110 Chair in RAL 3012 stained beechwood and felt 2471, Marimba 114 lounge chair in natural beechwood and felt 2471, Drum 082 Table in natural and RAL 3012 lacquered beechwood







Cat. Sedie, chairs  
Poltroncine, armchairs

Fratina è ispirata alle classiche sedie con sedile in paglia palustre. Nella reinterpretazione di Emilio Nanni, che ne esagera le linee, le gambe hanno sezione tonda e lo schienale, agganciato alle gambe posteriori, è generoso al punto da diventare un semicerchio nella versione poltroncina. Il sedile è disponibile in tessuto, cuoietto, cinghie o cordino di cellulosa intrecciato, che simula l'antica lavorazione della paglia di palude. Insignita del Red Dot Design Award nel 2016, Fratina è la quintessenza di Billiani - una sedia in equilibrio perfetto fra tradizione e sperimentazione.

Fratina is inspired by those classic chairs with rush seats. In Emilio Nanni's reinterpretation, the designer exaggerates its lines, the legs have a round section and the backrest, attached to the rear legs, is generous to the point of becoming a semicircle in the armchair version. The seat is available in fabric, leather, straps or woven cellulose cord, which simulates the ancient processing of rush wickerwork. Awarded the Red Dot Design Award in 2016, Fratina is quintessentially Billiani - a chair in perfect balance between tradition and experimentation.





Fratina 681 Poltroncina in frassino tinto  
RAL 7044 e Divina3 2460, Fratina 680  
Sedia in frassino sbiancato e cordino 0530

/ Fratina 681 Armchair in RAL 7044 stained  
ashwood and Divina3 2460, Fratina 680 Chair  
in bleached ashwood and cellulose rope 0530



Fratina 681 Poltroncina in frassino tinto  
RAL 7016 e cinghia 1701, Fratina 680 Sedia  
in frassino tinto RAL 7044 e cordino 0529

/ Fratina 681 Armchair in RAL 7016 stained  
ashwood and straps 1701, Fratina 680 Chair  
in RAL 7044 stained ashwood and cellulose  
rope 0529







# Realizzazioni / Projects



A



B



C

A	Neni	Location: Spain, Category: Restaurant
B, C	Hagakure	Location: Italy, Category: Restaurant
D, E	Spicy NoSpicy	Location: Ukraine, Category: Restaurant
F	7 Goats	Location: Ukraine, Category: Restaurant



D



E



F

Cat. Sedie, chairs  
Poltroncine, armchairs  
Sgabelli, stools

Nella sedia Blazer di Emilio Nanni l'estetica è definita dalle caratteristiche costruttive. Il tresso anteriore leggermente rientrante, il sedile sollevato e le gambe sfilate traducono un'idea di leggerezza ed eleganza, mentre i braccioli della poltroncina e l'imbottitura accrescono il comfort della seduta.

In the Blazer chair by Emilio Nanni, aesthetics are defined by its construction features. The slightly recessed front beam, the raised seat and the tapered legs translate an idea of lightness and elegance, while the armchair and upholstered versions make for extra comfort.





Blazer 630 Poltroncina in faggio tinto  
RAL 3012, Blazer 233 Sgabello in faggio tinto  
noce e Ombra 2461,

Blazer 633 Sedia in faggio naturale e Ombra  
2461, Blazer 232 Sgabello in faggio tinto  
RAL 3012



/ Blazer 630 Armchair in RAL 3012 stained  
beechwood, Blazer 233 Barstool in walnut  
stained beechwood and Ombra 2461,

Blazer 633 Chair in natural beechwood  
and Ombra 2461, Blazer 232 Barstool in  
RAL 3012 stained beechwood



Blazer 629 Poltroncina in faggio tinto noce  
e Ombra 2462, Blazer 632 Sedia in faggio  
tinto noce

/ Blazer 629 Armchair in walnut stained  
beechwood and Ombra 2462, Blazer 632  
Chair in walnut stained beechwood



Blazer 232 Sgabello in faggio tinto RAL 3012,  
Blazer 233 Sgabello in faggio naturale e Ombra  
2462, Blazer 233 Sgabello in faggio tinto noce

e Ombra 2461, Blazer 232 Sgabello in faggio  
naturale / Blazer 232 Barstool in RAL 3012 stained  
beechwood, Blazer 233 Barstool in natural

beechwood and Ombra 2462, Blazer 233 Barstool  
in walnut stained beechwood and Ombra 2461,  
Blazer 232 Barstool in natural beechwood











## Realizzazioni / Projects



A



B

Cat. Sedie, chairs  
Poltroncine, armchairs  
Sgabelli, stools

Tra i tanti dipinti di Vincent van Gogh ce n'è più di qualcuno che raffigura sedie. Sedie semplici, solide, tradizionali, di quelle che un secolo fa si potevano trovare dentro ogni casa di campagna. A queste s'ispira Vincent v. G., collezione disegnata da Werther Toffoloni che fa dialogare antico e moderno, solidità e leggerezza, arte e design.

Amongst Vincent van Gogh's various paintings, there are a number that feature chairs. Simple, solid, traditional chairs of type that, more than a century ago, could be found in every country house. The Vincent v. G. is inspired by these, a collection designed by Werther Toffoloni that brings together ancient and modern, solidity and lightness, art and design.



Vincent v. G. 440 Sedia in frassino tinto  
RAL 7044 e cuoietto 2340, Vincent v. G. 441  
Poltroncina in frassino sbiancato e cuoietto 1545

/ Vincent v. G. 440 Chair in RAL 7044 stained  
ashwood and hide 2340, Vincent v. G. 441  
Armchair in bleached ashwood and hide 1545



Vincent v. G. 444 Sgabello in frassino tinto  
RAL 7044 e cuoietto 2340, Vincent v. G. 440  
e 444 Sedia e sgabello in frassino sbiancato  
e Boemian 2407

/ Vincent v. G. 444 Barstool in RAL 7044 stained  
ashwood and hide 2340, Vincent v. G. 440  
and 444 Chair and barstool in bleached  
ashwood and Boemian 2407





Vincent v. G. 441 Poltroncine in frassino  
tinto tabacco e tinto RAL 3004, Boemian  
2404 e cordino 0543

/ Vincent v. G. 441 Armchairs in tobacco stained  
and RAL 3004 stained ashwood, Boemian  
2404 and cellulose rope 0543



Cat. Sedie, chairs  
Sgabelli, stools

Werther Toffoloni ha disegnato Gradisca in occasione della personale che gli è stata dedicata dalla Galleria d'arte contemporanea Luigi Spazzapan di Gradisca d'Isonzo, tributo alla sua lunga carriera. È una collezione che sintetizza i valori tradizionali del distretto, produttività e concretezza, attraverso linee vivaci e nuove tecniche di produzione. Un esempio di come la sedia made in Friuli possa trasformarsi in un oggetto universale.

Werther Toffoloni designed Gradisca on the occasion of the tribute dedicated to him by the Luigi Spazzapan contemporary art gallery in Gradisca d'Isonzo, commemorating his long career. It is a collection that summarizes the traditional values of the district, productivity and concreteness, through lively lines and new production techniques. Another example of how the "Made in Friuli" chair can be transformed into a universal object.



Gradisca 620 Sedia in faggio laccato  
RAL 5014, Gradisca 622 Sedia in faggio  
sbiancato e Ombra 2461

/ Gradisca 620 Chair in RAL 5014 lacquered  
beechwood, Gradisca 622 Chair in bleached  
beechwood and Ombra 2461



Gradisca 622 Sedia in faggio laccato  
NCS S 1070 Y80R e Ombra 2466, Gradisca  
625 Sgabello in faggio laccato NCS S 1070  
Y80R e Ombra 2461

/ Gradisca 622 Chair in NCS S 1070 Y80R  
lacquered beechwood and Ombra 2466,  
Gradisca 625 Barstool in NCS S 1070 Y80R  
lacquered beechwood and Ombra 2461



Gradisca 619 Sgabello in faggio sbiancato  
e Ombra 2462, Gradisca 620 Sedia in faggio  
laccato RAL 7016

/ Gradisca 619 Stool in bleached beechwood  
and Ombra 2462, Gradisca 620 Chair in  
RAL 7016 lacquered beechwood



Gradisca 622 Sedie in faggio sbiancato  
e laccato NCS S 1070 Y80R,  
Ombra 2461 e 2466

/ Gradisca 622 Chairs in bleached and  
NCS S 1070 Y80R lacquered beechwood,  
Ombra 2461 and 2466



Gradisca 626 Sgabello in faggio laccato RAL 5014, Gradisca 617 Sgabello in faggio laccato RAL 6020, Gradisca 628 Sgabello in faggio laccato RAL 7016 e Ombra 2461

/ Gradisca 626 Stool in RAL 5014 lacquered beechwood, Gradisca 617 Stool in RAL 6020 lacquered beechwood, Gradisca 628 Stool in RAL 7016 lacquered beechwood and Ombra 2461



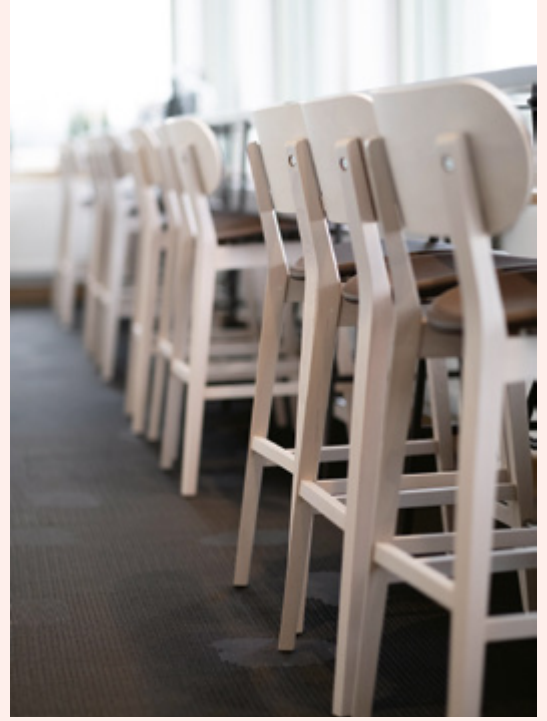




# Realizzazioni / Projects



A



B



C





D



E



F

Cat. Sedie, chairs  
Sgabelli, stools

Nella collezione Tracy il disegno è declinato in due versioni, con schienale continuo in multistrato curvato o con listelli in massello. Sgabello o sedia, con sedile imbottito o meno, Tracy è la soluzione per chi cerca varietà nella continuità, come nei luoghi del contract.

The Tracy collection is designed in two versions, with a continuous backrest in curved plywood or as a spandrelback. Whether as a barstool or chair, with or without upholstered seat, Tracy is the solution for those seeking variety in continuity, such as in contract locations.

Tracy 565 Sedia in faggio sbiancato, Tracy  
568 Sedia in faggio laccato RAL 3004  
e Boemian 2404

/ Tracy 565 Chair in bleached beechwood,  
Tracy 568 Chair in RAL 3004 lacquered  
beechwood and Boemian 2404



Tracy 568 Sedia in faggio laccato RAL 3004 e Boemian 2404, Tracy 567 Sedia in faggio sbiancato e laccato RAL 7016

/ Tracy 568 Chair in RAL 3004 lacquered beechwood and Boemian 2404, Tracy 567 Chairs in bleached and RAL 7016 lacquered beechwood



Tracy 598 Sgabello in faggio sbiancato e  
Boemian 2407, Tracy 597 Sgabello in faggio  
laccato RAL 3004

/ Tracy 598 Barstool in bleached beechwood  
and Boemian 2407, Tracy 597 Barstool in  
RAL 3004 lacquered beechwood





# Realizzazioni / Projects



A



B



C



Cat. Poltroncine, armchairs

Marco Ferreri reinterpreta un'ìcona del design scandinavo, la classica seduta a pozzetto, e crea una sedia di grande semplicità costruttiva dal segno elegante. E se la forma è d'ispirazione nordica, la tecnica ricalca la tradizione di Billiani, con tagli di raccordo in evidenza, base tornita e spessori maggiorati. Lo schienale curvo, che si allunga a formare i braccioli, conferisce a Nordica una personalità ben precisa, accogliendo chi si siede con il giusto comfort.

Marco Ferreri reinterprets an icon of Scandinavian design, the classic cockpit seat, and creates a chair of great constructive simplicity with a touch of elegance. And if the shape is Nordic-inspired, the technique follows the Billiani tradition, with visible fillet cuts, turned base and increased thicknesses. The curved backrest, which extends to form the armrests, gives Nordica a very specific personality, welcoming those who sit in it with just the right comfort.





Nordica 601 Poltroncina in faggio laccato RAL 5014 e Boemian 2401, Nordica 601 Poltroncina in faggio tinto noce e Inca 1191, Nordica 600

Poltroncina in faggio sbiancato / Nordica 601 Armchair in RAL 5014 lacquered beechwood and Boemian 2401, Nordica 601 Armchair in

walnut stained beechwood and Inca 1191, Nordica 600 Armchair in bleached beechwood



Nordica 601 Poltroncina in faggio tinto  
noce e Inca 1191, Nordica 600 Poltroncina  
in faggio tinto RAL 6020

/ Nordica 601 Armchair in walnut stained  
beechwood and Inca 1191, Nordica 600  
Armchair in RAL 6020 stained beechwood



Cat. Sedie, chairs  
Lounge, lounge chairs  
Sgabelli, stools

La corrispondenza tra forma e funzione è uno degli assiomi su cui si basa la ricerca di Emilio Nanni e in questo senso Load è l'oggetto ideale, una sedia ridotta ai minimi termini. E proprio dall'essenzialità si sviluppa la creatività, tipologica ed estetica. Il risultato è una collezione che oltre alla sedia include poltrona e sgabello - anche nelle varianti con schienale in cima nautica intrecciata, una lavorazione ispirata al territorio di Billiani che, al confine tra collina e pianura, non è lontano dal mare.

The correspondence between form and function is one of the axioms on which Emilio Nanni's research is based and in this sense Load is just the ticket, a chair reduced to minimums. And from this very essentiality is developed typological and aesthetic creativity. The result is a collection that, in addition to the side chairs, includes lounge chairs as well as barstools - also in the variants with the upper back in nautical rope, craftsmanship inspired by the Billiani territory which, on the border between the hills and the plains, lies not very far from the sea.



Load 643 Sedia in faggio sbiancato,  
Twiltwenty 2275 e corda 001, Load 649  
Sgabello in faggio laccato RAL 3012 e  
Credo 2283, Load 646 Sgabello in faggio

laccato NCS S 7020 R80B e corda 003,  
Load 647 Lounge in faggio laccato  
RAL 3012, Twiltwenty 2275 e corda 001



/ Load 643 Chair in bleached beechwood,  
Twiltwenty 2275 and rope 001, Load 649  
Barstool in RAL 3012 lacquered beechwood

and Credo 2283, Load 646 Barstool in  
NCS S 7020 R80B lacquered beechwood  
and rope 003, Load 647 Lounge chair in

RAL 3012 lacquered beechwood, Twiltwenty  
2275 and rope 001



Load 645 Sgabello in faggio laccato RAL 3012,  
Load 612 e 647 Lounge in faggio laccato RAL  
3012, Twilltwenty 2275 e corda 001

/ Load 645 Barstool in RAL 3012 lacquered  
beechwood, Load 612 and 647 Lounge chairs  
in RAL 3012 lacquered beechwood, Twilltwenty  
2275 and rope 001









# Realizzazioni / Projects



A



B



C



D



E



F



G

A, B The Penny Drop

Location: Australia, Category: Cafe

C, D Omma

Location: Greece, Category: Hotel

E, F, G Fire &amp; Bread

Location: Spain, Category: Restaurant

H El Tequito

Location: Germany, Category: Restaurant

I, L V-ZUG showroom

Location: Australia, Category: Corporate



H



I



L

Cat. Sedie, chairs

Non tutte le sedie nascono impilabili: lo diventano quando sono delle dimensioni giuste per essere sovrapposte e abbastanza leggere per essere sollevate. Take è una sedia progettata per unire la bellezza e la solidità del legno all'impilabilità. Una caratteristica che la rende ideale nei luoghi del contract e ovunque sia necessario aggiungere o togliere sedute facilmente e senza rinunciare all'ordine.

Not all chairs are born stackable: they become stackable when they are the right size to be stacked and light enough to be lifted. Take is a chair designed to combine the beauty and solidity of wood with stackability. This feature makes it ideal in contract locations and wherever it is necessary to add or remove seats easily and without untidiness.



Take 586 e 585 Sedie in faggio sbiancato  
e Soft Unito 2398, Take 586 Sedia in faggio  
tinto RAL 3004 e Boemian 2404

/ Take 586 and 585 Chairs in bleached  
beechwood and Soft Unito 2398, Take 586  
Chair in RAL 3004 stained beechwood  
and Boemian 2404





Take 586 Sedie in faggio tinto RAL 8016  
e faggio sbiancato, Soft Unito 2398,  
Take 585 Sedia in faggio tinto RAL 3004

/ Take 586 Chairs in RAL 8016 stained  
beechwood and bleached beechwood,  
Soft Unito 2398, Take 585 Chair in  
RAL 3004 stained beechwood





# Realizzazioni / Projects



A



B



C

Cat. Sedie, chairs  
Lounge, lounge chairs  
Tavoli, tables

Quando Gabriele Rigamonti, Carla Scorda e Vittorio Turla di Studiocharlie presentano a Billiani la sedia in legno che hanno disegnato, il prototipo è color rosso arancio e il suo nome è Aragosta, per via della seduta imponente e delle gambe sottili. Inizia così il sodalizio fra i designer di formazione brianzola e il know-how del distretto friulano. La sedia, così come la poltrona, è frutto di espedienti tecnici di grande sapienza come il sedile affinato in punta e lo schienale sottile e leggermente inclinato, che suggeriscono vivacità e dinamismo. Le gambe, perpendicolari al terreno, sono lavorate in modo tale da non sembrare chiudersi su se stesse come accadrebbe se fossero semplicemente dritte: una correzione ottica ispirata dalla tipografia, grande passione di Studiocharlie.

When Gabriele Rigamonti, Carla Scorda and Vittorio Turla of Studiocharlie presented the wooden chair they had designed to Billiani, the prototype was orangey red and its name was Aragosta, the Italian for lobster, due to the imposing seat and tapering legs. Thus began the partnership between these Brianza-trained designers and the know-how of the Friuli district. The Aragosta chair, as well as the armchair, are the result of highly skilled technical procedures such as the seat being refined at the front and the thin and slightly tilted backrest, suggesting liveliness and dynamism. The legs, upright on the ground, are worked in such a way that they do not seem to close on themselves as they would if they were simply straight: an optical correction inspired by typography, a great passion of Studiocharlie.





Aragosta 582 Lounge in frassino laccato NCS S 1070 Y80R e Divina3 1454, Aragosta 582 Lounge in frassino sbiancato e Divina3 2460

/ Aragosta 582 Lounge chair in NCS S 1070 Y80R lacquered ashwood and Divina3 1454,

Aragosta 582 Lounge chair in bleached ashwood and Divina3 2460







Aragosta 583 Tavolo in frassino sbiancato,  
Aragosta 584 Tavolo in frassino laccato  
RAL 7016

/ Aragosta 583 Table in bleached  
ashwood, Aragosta 584 Table in RAL 7016  
lacquered ashwood





# Realizzazioni / Projects



A



B



C

# Toccata & Fuga

Design: Paul Loebach, 2009



Cat. Sedie, chairs  
Poltroncine, armchairs

Toccata & Fuga sono una sedia e una poltroncina con gambe, schienale e braccioli torniti, un esercizio di stile progettato da Paul Loebach e realizzato da Billiani. Due gli spunti di partenza: da un lato la storia del design e le classiche sedie con gambe tornite, dall'altro la tecnologia delle macchine multi-asse a controllo numerico. L'esito è una collezione dal fascino antico e dallo spirito contemporaneo.

Toccata & Fuga are a chair and armchair with turned legs, backs and armrests, an exercise in style designed by Paul Loebach and created by Billiani. Two starting points: on the one hand the history of design and classic chairs with turned legs; on the other the technology of numerical control multi-axis machines. The result is a collection with ancient charm and a contemporary spirit.

Toccata 530 Sedia in faggio tinto RAL 3012 e Boemian 2403, Fuga 531 Poltroncina in faggio naturale e Twilltwenty 2275

/ Toccata 530 Chair in RAL 3012 stained beechwood and Boemian 2403, Fuga 531 Armchair in natural beechwood and Twilltwenty 2275



Fuga 531 Poltroncina in faggio tinto NCS S 1020 R90B e Twilltwenty 2275, Fuga 531 Poltroncina in faggio tinto NCS S 7020 R80B

e Boemian 2406 / Fuga 531 Armchair in NCS S 1020 R90B stained beechwood and Twilltwenty 2275,

Fuga 531 Armchair in NCS S 7020 R80B stained beechwood and Boemian 2406



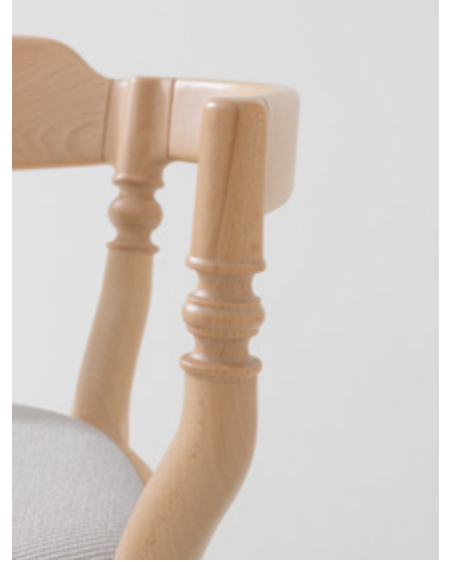
Fuga 531 Poltroncina in faggio naturale  
e Twilltwenty 2275, Toccata 530 Sedie in faggio  
tinto RAL 3012 e sbiancato e Boemian 2403

/ Fuga 531 Armchair in natural beechwood  
and Twilltwenty 2275, Toccata 530 Chairs in  
RAL 3012 stained and bleached beechwood  
and Boemian 2403









Cat. Sedie, chairs  
 Poltroncine, armchairs  
 Lounge, lounge chairs  
 Sgabelli, stools

Fabrizio Gallinaro reinterpreta la classica sedia Windsor adattandola allo spirito contemporaneo di Billiani. Nasce così W., che già dal nome dichiara il processo di riduzione e sottrazione di cui è il risultato. Nata in Inghilterra alla fine del Settecento e divenuta popolare in America, la Windsor è una delle tipologie di sedia più prolifiche della storia del design. È caratterizzata dall'inconfondibile schienale con elemento orizzontale curvo e listelli che si innestano nella seduta. È proprio su questi elementi, e più in generale su tutti gli elementi che compongono la sedia, che ha lavorato Gallinaro, riducendo al limite il materiale e riprogettando le inclinazioni e i rapporti tra le parti. Classico contemporaneo, W. è declinata in una serie di varianti tra cui la rocking chair, prima sedia a dondolo realizzata da Billiani.

Fabrizio Gallinaro reinterpreted the classic Windsor chair, adapting it to the contemporary spirit of Billiani. So was born W., which, right from the choice of name, declares the process of reduction and subtraction of which it is the result. Originating in England in the late eighteenth century and subsequently popular in America, the Windsor is one of the most prolific types of chair in the history of design. It is characterised by its unmistakable backrest with curved horizontal element and spindles that fit into the seat. It is precisely on these elements, and also more generally on all the elements that make up the chair, that Gallinaro worked, reducing the material to a minimum and redesigning the angles and ratios between the parts. Classically contemporary, W. comes in a series of variants including rocking chair, the first ever rocking chair made by Billiani.



W. 605 Sedie in faggio sbiancato e tinto NCS S 1070 Y80R, W. 607 Sgabelli in faggio tinto RAL 7033 e sbiancato con cuscini Credo 2282

/ W. 605 Chairs in bleached and NCS S 1070 Y80R stained beechwood, W. 607 Barstools in RAL 7033 stained and bleached beechwood with cushions Credo 2282



W. 603 Poltroncina in faggio tinto RAL 7044 con cuscino Credo 2285, W. 603 Poltroncina in faggio naturale, W. 606 Lounge in faggio tinto RAL 5014

/ W. 603 Armchair in RAL 7044 stained beechwood with cushion Credo 2285, W. 603 Armchair in natural beechwood, W. 606 Lounge chair in RAL 5014 stained beechwood



W. 608 Sedia a dondolo in faggio tinto  
RAL 7033, W. 604 Poltroncina a dondolo  
in faggio tinto RAL 5014

/ W. 608 Rocking chair in RAL 7033 stained  
beechwood, W. 604 Rocking armchair in  
RAL 5014 stained beechwood







A



B



C



C	Hagakure NOH Samba	Location: Italy, Category: Restaurant
D	Stand Italgraniti, Cersaie	Location: Italy, Category: Corporate
E, G	Pushka Apartment	Location: Ukraine, Category: Home
F	The Traveller	Location: Netherlands, Category: Restaurant



D



E



F



G

Cat. Sedie, chairs  
Lounge, lounge chairs  
Sgabelli, stools  
Tavoli, tables

Fedele alla materia legno, la collezione Drum si riconosce per la qualità delle lavorazioni che caratterizzano sedia, lounge, sgabelli in tre altezze e tavoli di diversi formati.

Particolare la svasatura del sedile – spesso ma rastremato, come il piano del tavolo. Nelle sedie e nello sgabello con schienale, le gambe posteriori si allungano a sostenere la spalliera in multistrato curvato, sfinandosi e inclinandosi leggermente. La sedia in legno si riconferma un classico che ha ancora molto da dire.

Faithful to wood itself, the Drum collection stands out for the quality of the processes that characterize the side and lounge chairs and the stools in three heights, as well as tables of different sizes. The flaring of the seat is especially striking – thick yet tapered, like the table top. In the chairs and in the barstool with backrest, the rear legs lengthen to support the curved plywood backrest, tapering and tilting slightly. The wooden side chair remains a classic that still has a great deal to say.



Drum 070 Sedia in faggio tinto noce, Drum  
075 Sgabello in faggio laccato RAL 7044  
e Boemian 2403

/ Drum 070 Chair in walnut stained  
beechwood, Drum 075 Barstool in RAL 7044  
lacquered beechwood and Boemian 2403



Drum 079 Lounge in faggio laccato  
NCS S 7020 R80B e Boemian 2400,  
Drum 077 Sgabello in faggio sbiancato  
e Divina3 2460

/ Drum 079 Lounge chair in NCS S 7020 R80B  
lacquered beechwood and Boemian 2400,  
Drum 077 Barstool in bleached beechwood  
and Divina3 2460



Drum 070 Sedie in faggio naturale e tinto  
noce, Drum 082 Tavolo in faggio naturale  
e laccato RAL 3012

/ Drum 070 Chairs in natural and walnut  
stained beechwood, Drum 082 Table in natural  
and RAL 3012 lacquered beechwood





Drum 075 Sgabello in faggio laccato RAL 7044 e Boemian 2403, Drum 076 Sgabello in faggio laccato RAL 3012

/ Drum 075 Barstool in RAL 7044 lacquered beechwood and Boemian 2403, Drum 076 Barstool in RAL 3012 lacquered beechwood





Drum 070 Sedia in faggio tinto RAL 3012,  
Drum071 Sedia in faggio naturale e  
Boemian 2400

/ Drum 070 Chair in RAL 3012 stained  
beechwood, Drum 071 Chair in natural  
beechwood and Boemian 2400







Cat. Sedie, chairs

Francesco Faccin è un designer che ama il legno e il lavoro artigianale. Con Billiani si è dunque creata la connessione perfetta e Green ne è il risultato. Punto di partenza è il design nordico degli anni Trenta, riletto però nelle proporzioni. Il profilo, solido eppure essenziale, integra gli elementi strutturali e lo schienale curvato è accogliente, così come la sagomatura del sedile. Le gambe, leggermente sovradimensionate rispetto al solito, sono alleggerite dal sedile sottile e leggermente sollevato.

Francesco Faccin is a designer who loves wood and craftsmanship. With Billiani, therefore, the perfect connection was created and Green is the result. The starting point is the Nordic design of the 1930s, but with tweaked proportions. The profile, solid yet essential, integrates the structural elements and the curved backrest is welcoming, as is the shape of the seat. The legs, slightly oversized compared to the norm, are lightened by the thin and slightly raised seat.





Green 002 Sedia in frassino naturale e Ombra 2462, Green 002 Sedia in frassino tinto RAL 6020 e Ombra 2461, Green 001 Sedia in frassino tinto RAL 5014

/ Green 002 Chair in natural ashwood and Ombra 2462, Green 002 Chair in RAL 6020 stained ashwood and Ombra 2461, Green 001 Chair in RAL 5014 stained ashwood





Cat. Sedie, chairs  
Poltroncine, armchairs  
Sgabelli, stools

Classica sedia da osteria, Cafè racconta la storia di un territorio in cui non sono solo le falegnamerie a essere protagoniste, ma anche le vigne e i campi di granturco. Werther Toffoloni lavora sulle proporzioni e sulle linee, conservando lo spirito antico di questa sedia sempre attuale.

The classic tavern chair, Cafè tells the story of a territory in which not only carpenters are the protagonists, but also the vineyards and corn fields. Werther Toffoloni has worked on the proportions and lines, preserving the ancient spirit of this ever-contemporary chair.



Cafè 460 Sedia in faggio naturale, Cafè 461  
Poltroncina in faggio laccato RAL 7044  
e Boemian 2407

/ Cafè 460 Chair in natural beechwood,  
Cafè 461 Armchair in RAL 7044 lacquered  
beechwood and Boemian 2407



Cafè 460 Sedia in faggio laccato RAL 7044  
e Boemian 2407, Cafè 462 e 461 Sgabello  
e poltroncina in faggio laccato RAL 7016

e Boemian 2404, Cafè 461 Poltroncina  
in faggio tinto noce



/ Cafè 460 Chair in RAL 7044 lacquered  
beechwood and Boemian 2407, Cafè 462  
and 461 Barstool and armchair in RAL 7016

lacquered beechwood and Boemian 2404, Cafè  
461 Armchair in walnut stained beechwood





Cafè 460 Sedia in faggio laccato RAL 7044  
e Boemian 2407, Cafè 460 e 462 Sedia  
e sgabello in faggio tinto noce

/ Cafè 460 Chair in RAL 7044 lacquered  
beechwood and Boemian 2407, Cafè 460  
and 462 Chair and barstool in walnut stained  
beechwood





## Realizzazioni / Projects



A



B



C

Cat. Sedie, chairs  
Sgabelli, stools

Tra i primi prodotti della nuova Billiani, alla ricerca di un modo per far evolvere le forme tradizionali in prodotti dall'aspetto contemporaneo, Aloe è una rivisitazione della sedia rustica in chiave design. Le linee dolci dello schienale la rendono rassicurante e accogliente, anche nella versione sgabello.

Among the first products of the new Billiani, looking for a way to evolve traditional shapes into products with a contemporary appearance, Aloe is a reinterpretation of the rustic chair with a design influence. The gentle lines of the back make it reassuring and welcoming, also in the stool version.





Aloe 432 Sedia in faggio laccato RAL 1027,  
Aloe 434 Sgabello in faggio naturale, Aloe 432  
Sedia in faggio laccato RAL 7033 e Divina3 2458

/ Aloe 432 Chair in RAL 1027 lacquered  
beechwood, Aloe 434 Barstool in natural  
beechwood, Aloe 432 Chair in RAL 7033  
lacquered beechwood and Divina3 2458



Aloe 434 Sgabello in faggio laccato RAL 7016 e Divina3 2459, Aloe 432 Sedia in faggio laccato RAL 1027

/ Aloe 434 Barstool in RAL 7016 lacquered beechwood and Divina3 2459, Aloe 432 Chair in RAL 1027 lacquered beechwood



## Realizzazioni / Projects



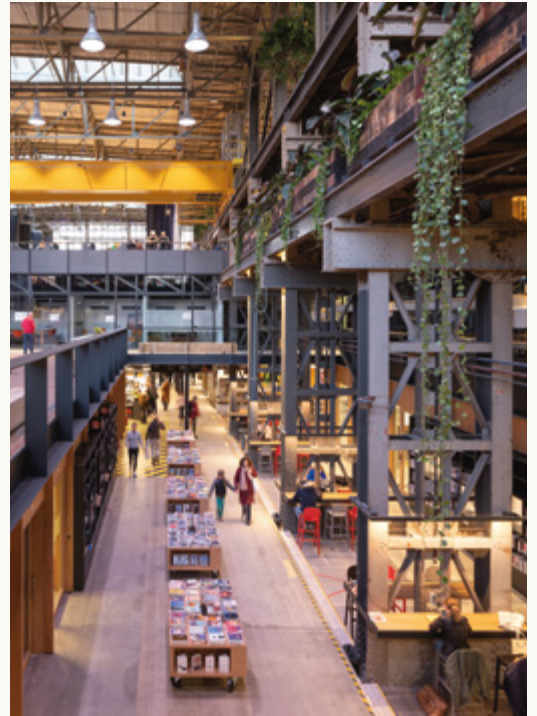
A



B



C



D



E



F

# Foglia

Design: Marco Ferreri, 2001



Cat. Sedie, chairs  
Sgabelli, stools

Foglia è, per molti aspetti, un archetipo. Non soltanto segna l'ingresso di Billiani nel mondo del design, premiata dal Catas per l'innovazione e subito selezionata per il Compasso d'Oro e il Red Dot Design Award, ma è anche la sedia per antonomasia, quella che disegnerebbe un bambino tracciando linee semplici e nette. Con Foglia Marco Ferreri esplora l'idea di leggerezza fino ad arrivare a una scocca in legno sottilissima, una superficie continua di un millimetro e mezzo adagiata su una struttura in massello. Solida eppure fluida, elegante e di carattere, questa sedia è diventata un'icona nel campo delle ultraleggere.

Foglia is, in many respects, an archetype. Not only does it mark Billiani's entry into the world of design, awarded by Catas for innovation and immediately selected for the Compasso d'Oro and the Red Dot Design Awards, but it is also the chair par excellence, what a child would trace by drawing simple and clean lines. In Foglia, Marco Ferreri explores the idea of lightness all the way until achieving a very thin wooden shell, a continuous surface of a millimetre and a half on a solid wood structure. Solid yet fluid, elegant and with character, this chair has become an icon and the model for many ultralights to follow.



Foglia 429 Sgabello in rovere tinto tabacco,  
Foglia 428 Sedie in rovere tinto RAL 3004  
e RAL 8016

/ Foglia 429 Barstool in tobacco stained  
oakwood, Foglia 428 Chairs in RAL 3004  
and RAL 8016 stained oakwood







Cat. Sgabelli, stools  
Panchette, benches  
Tavoli, tables

Puccio s'ispira agli sgabelli da mungitura, sedute senza design né designer che per la loro funzionalità hanno superato senza cambiamenti il passare dei secoli. A partire da questo oggetto antico, che forse Bruno Munari avrebbe inserito tra quelli del famoso elenco "Compasso d'Oro a ignoti", Emilio Nanni crea una collezione di sgabelli, panche e tavoli pensati per arredare gli spazi più ristretti, come quelli di un marciapiede. Oltre alla versione in frassino, che esprime il calore del legno, la famiglia Puccio è disponibile anche in acciaio, più leggera, essenziale e sofisticata.

Puccio is inspired by milking stools, seats without design or designers which thanks to their functionality, have survived unchanged over centuries. Starting from this quaintly old-fashioned item, which Bruno Munari would perhaps have included among those of the famous list "Compasso d'Oro Unknowns", Emilio Nanni created a collection of stools, benches and tables designed to furnish the tightest spaces, such as on a pavement. In addition to the ash version, which expresses the warmth of wood, Puccio is also available in steel, lighter, essential and more sophisticated.



Puccio 711 Sgabello in frassino tinto RAL 7016,  
Puccio 712 Sgabello in frassino tinto NCS S  
7020 R80B, Puccio 717 Tavoli in frassino tinto  
RAL 7016 e frassino sbiancato

/ Puccio 711 Stool in RAL 7016 stained ashwood,  
Puccio 712 Barstool in NCS S 7020 R80B stained  
ashwood, Puccio 717 Tables in RAL 7016 stained  
ashwood and bleached ashwood



Puccio 718 Tavolo in frassino tinto tabacco,  
Puccio 711 Sgabello in frassino tinto RAL 3012,  
Puccio 710 Sgabello in frassino tinto tabacco

/ Puccio 718 Table in tobacco stained ashwood,  
Puccio 711 Stool in RAL 3012 stained ashwood,  
Puccio 710 Stool in tobacco stained ashwood





Puccio 715 Sgabello in acciaio laccato  
RAL 5003 e frassino tinto NCS S 7020 R80B,  
Puccio 713 Sgabello in acciaio laccato  
RAL 7016 e frassino naturale

/ Puccio 715 Barstool in RAL 5003 lacquered  
steel and NCS S 7020 R80B stained ashwood,  
Puccio 713 Stool in RAL 7016 lacquered steel  
and natural ashwood



Puccio 714 Sgabello in acciaio laccato  
RAL 3012 e frassino tinto tabacco, Puccio 721  
Tavolo in acciaio laccato RAL 3012 e frassino

tinto RAL 1015, Puccio 716 Panchetta in acciaio  
laccato RAL 3012 e frassino tinto tabacco







Puccio 715 Sgabelli in acciaio laccato  
RAL 5003 e frassino tinto tabacco  
e tinto NCS S 7020 R80B

/ Puccio 715 Barstools in RAL 5003  
lacquered steel and tobacco stained and  
NCS S 7020 R80B stained ashwood





Cat. Poltroncine, armchairs  
Lounge, lounge chairs

Sey rappresenta un felice sconfinamento di Billiani in un territorio ancora poco esplorato dall'azienda. Disegnata da Emilio Nanni, unisce a una struttura in acciaio con braccioli, leggera e minimale, una scocca tappezzata o intrecciata in cima nautica. Da rassicurante seduta per il contract, Sey diventa così anche il prodotto ideale per l'outdoor, cui s'ispira sia nei colori sia nei materiali.

Sey represents Billiani happily dipping its toe into an area still relatively unexplored by the company. Designed by Emilio Nanni, Sey combines a steel frame with armrests, light and minimal, with upholstery or nautical rope weave. From a reassuring contract chair, Sey thus also becomes the ideal product for outdoors, which inspires both its colours and materials.



Sey 690 Poltroncina in acciaio laccato RAL 5014 e Twilltwenty 2274, Sey 690 Poltroncina in acciaio laccato RAL 7044 e Credo 2282,

Sey 690 Poltroncina in acciaio laccato RAL 7016 e Credo 2285 / Sey 690 Armchair in RAL 5014 lacquered steel and Twilltwenty 2274, Sey 690

Armchair in RAL 7044 lacquered steel and Credo 2282, Sey 690 Armchair in RAL 7016 lacquered steel and Credo 2285



Sey 693 Lounge in acciaio laccato RAL 5014 e Credo 2282, Sey 693 Lounge in acciaio laccato RAL 7016 e Credo 2281

/ Sey 693 Lounge chair in RAL 5014 lacquered steel and Credo 2282, Sey 693 Lounge chair in RAL 7016 lacquered steel and Credo 2281



Sey 691 Sedia in acciaio laccato RAL 7016 e corda 005, Sey 691 Sedia in acciaio laccato RAL 1027 e corda 003, Sey 694 Lounge in

acciaio laccato NCS S 1070 Y90R e corda 005 / Sey 691 Armchair in RAL 7016 lacquered steel and rope 005, Sey 691 Armchair in RAL

1027 lacquered steel and rope 003, Sey 694 Lounge chair in NCS S 1070 Y90R lacquered steel and rope 005







# Realizzazioni / Projects



A



B



C

A, B Sale e sarde

Location: Italy, Category: Restaurant

C The Studio Hotel

Location: Sweden, Category: Hotel

D, E, F Nour

Location: Australia, Category: Restaurant



D



E



F

Cat. Poltroncine, armchairs  
Lounge, lounge chairs  
Divani, sofas

Cristina Celestino disegna una collezione lounge dalle forme morbide e armoniose. I volumi tondeggianti sono alleggeriti dalla base in legno lavorato, cifra stilistica di Billiani. La linea ondulata si rifà all'universo della moda, il cui fascino è ben presente anche nella qualità del rivestimento, che trova la sua migliore espressione nell'abbinamento tra colori e texture diverse per struttura e cuscinatura.

Cristina Celestino designs a lounge collection with soft and harmonious shapes. The rounded volumes are lightened by the worked wood base, Billiani's stylistic code. The wavy line refers to the world of fashion, whose charm is also present in the quality of the coverings, which find their best expression in the combination of contrasting colours and textures to frame and cushioning.



Corolla 273 Divano in faggio sbiancato e Brionne 2410, Corolla 270 Poltroncina in faggio laccato RAL 7016 e Brionne 2411,

Corolla 272 Bergère in faggio laccato RAL 7044 e Boemian 2402, Corolla 271 Lounge in faggio sbiancato e Brionne 2408 e 2410



/ Corolla 273 Sofa in bleached beechwood and Brionne 2410, Corolla 270 Armchair in RAL 7016 lacquered beechwood and Brionne 2411, Corolla 272 Bergère in RAL 7044 lacquered

beechwood and Boemian 2402, Corolla 271 Lounge chair in bleached beechwood and Brionne 2408 and 2410



Corolla 273 Divano in faggio sbiancato  
e Boemian 2400, Corolla 272 Bergère in  
faggio laccato RAL 7044 e Boemian 2402

/ Corolla 273 Sofa in bleached beechwood and  
Boemian 2400, Corolla 272 Bergère in  
lacquered beechwood and Boemian 2402











Corolla 272 Bergère in faggio sbiancato  
e Boemian 2400, Corolla 272 Bergère in  
faggio laccato RAL 7016 e Brionne 2410

/ Corolla 272 Bergère in bleached beechwood  
and Boemian 2400, Corolla 272 Bergère in RAL  
7016 lacquered beechwood and Brionne 2410









Cat. Sedie, chairs  
Poltroncine, armchairs  
Lounge, lounge chairs  
Divani, sofas  
Dormeuse, dormeuse  
Tavoli, tables

Spy è una collezione ampia e completa di sedie, poltrone, tavoli e tavolini. Leitmotiv è il disegno della gamba, che si assottiglia in punta e si presenta leggermente svasata. Cifra stilistica delle sedute è invece la manifattura della scocca, che dà il suo meglio di spalle ripiegandosi ad accogliere le gambe posteriori. Quattro i modelli di poltrona disponibili, dalla poltroncina elegante alla bergère, accogliente e confortevole. Oltre alla base in legno, è disponibile anche la variante in acciaio, modellata sulla scocca imbottita.

Spy is an extensive and complete collection of chairs, lounge chairs, armchairs, tables and coffee tables. Its leitmotif is the design of the leg, which tapers and is slightly splayed. The stylistic feature is the design of the body, with its rounded shoulders folding back to receive the rear legs. Four Spy pieces are available, from the elegant dining chair to the welcoming and comfortable rounded bergère. In addition to the wooden base, a steel version is also available.





Spy 659 Lounge high in faggio tinto RAL 6020 e 5014, Divina3 2459 e 2458, Spy 651 e 663 Lounge e divano in faggio tinto RAL 5014 e Ombra 2468, Spy 654 Tavolino in faggio tinto RAL 5014 e marmo di Carrara



/ Spy 659 High-backed lounge chairs  
in RAL 6020 and RAL 5014 stained beechwood,  
Divina3 2459 and 2458, Spy 651 and 663  
Lounge chair and sofa in RAL 5014 stained

beechwood and Ombra 2468, Spy 654  
Table in RAL 5014 stained beechwood  
and Carrara marble



Spy 658 e 656 Bergère e pouf in faggio  
sbiancato e Boemian 2402, Spy 658 Bergère  
in faggio tinto RAL 6020 e Divina3 2459

/ Spy 658 and 656 Bergère and pouf in  
bleached beechwood and Boemian 2402,  
Spy 658 Bergère in RAL 6020 stained  
beechwood and Divina3 2459





Spy 650 Poltroncine in faggio tinto NCS S 1070 Y80R e Ombra 2467, Spy 650 Poltroncina in faggio tinto RAL 7044 e Ombra 2466,

Spy 655 Tavolo in faggio sbiancato e MDF laccato RAL 5014



/ Spy 650 Armchairs in NCS S 1070 Y80R stained beechwood and Ombra 2466, Spy 650 Armchair in RAL 7044 stained beechwood and Ombra 2466, Spy 655 Table in bleached beechwood and RAL 5014 lacquered MDF









Spy 652 Poltroncina in acciaio laccato RAL 5014 e Divina3 2458, Spy 662 Lounge high in acciaio laccato RAL 6020 e Divina3 2459

/ Spy 652 Armchair in RAL 5014 lacquered steel and Divina3 2458, Spy 662 High-backed lounge chair in RAL 6020 lacquered steel and Divina3 2459



Spy 657 Lounge in acciaio laccato RAL 5014  
e NCS S 1070 Y90R, Divina3 2458  
e Ombra 2467

/ Spy 657 Lounge chairs in RAL 5014 and  
NCS S 1070 Y90R lacquered steel, Divina3  
2458 and Ombra 2467







# Realizzazioni / Projects



A



B



C

A, B Apartment N08

Location: Netherlands, Category: Home

C, E Wilma Wunder

Location: Germany, Category: Cafe

D Le General

Location: France, Category: Hotel

F Crowne Plaza

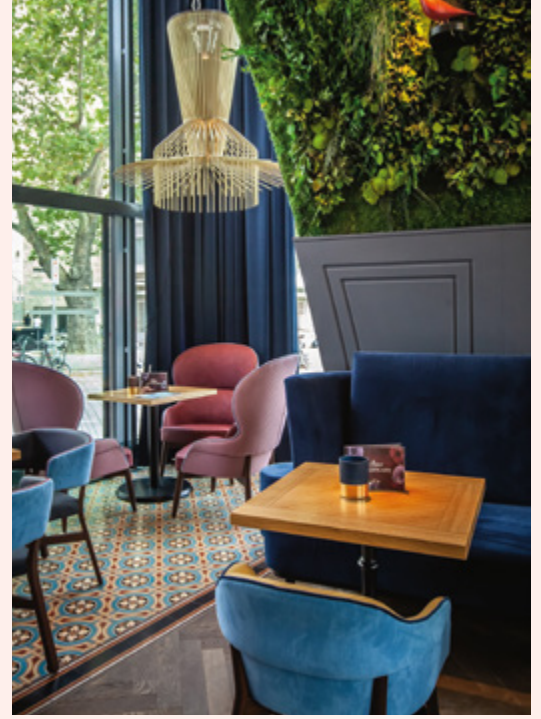
Location: Switzerland, Category: Hotel

G Bao

Location: Ukraine, Category: Restaurant



D



E



F



G

Cat. Sedie, chairs  
Poltroncine, armchairs  
Lounge, lounge chairs  
Sgabelli, stools

A tre anni dall'esordio con Croissant, Billiani ed Emilio Nanni si cimentano in una nuova seduta imbottita, con base in legno di faggio tornito o acciaio. Il saper fare artigianale si esprime qui nella lavorazione dell'imbottitura, dove le cuciture creano un gioco di volumi che rende la sedia visivamente accogliente. Confortevole, elegante come un abito di sartoria, Hippy si può personalizzare con tessuto proprio o scelto tra quelli della nuova selezione di Cristina Celestino.

Three years after their debut collaboration with Croissant, Billiani and Emilio Nanni undertook a new upholstered chair, with a choice of turned beechwood or a steel base. The craftsmanship is expressed here in the upholstery work, where the seams create a play of volumes that make the chair visually welcoming. Comfortable, and as elegant as a bespoke suit, Hippy can be customized with your own fabric or chosen from those of the new Cristina Celestino selection.







/ Hippy 615 Lounge chair in bleached  
beechwood and Brionne 2408, Hippy 635  
Chair in NCS S 1020 R90B lacquered

beechwood and Boemian 2406,  
Hippy 639 Barstool in NCS S 7020 R80B  
lacquered beechwood and Brionne 2411,

Hippy 636 Armchair in bleached beechwood  
and Boemian 2400



Hippy 636 Poltroncina in faggio sbiancato e Boemian 2400, Hippy 635 Sedia in faggio laccato NCS S 1020 R90B e Boemian 2406

/ Hippy 636 Armchair in bleached beechwood and Boemian 2400, Hippy 635 Chair in NCS S 1020 R90B lacquered beechwood and Boemian 2406





Hippy 639 Sgabelli in faggio laccato NCS S 7020 R80B e NCS S 1020 R90B, Brionne 2411 e Boemian 2406

/ Hippy 639 Barstools in NCS S 7020 R80B and NCS S 1020 R90B lacquered beechwood, Brionne 2411 and Boemian 2406



Hippy 638 Poltroncina in acciaio laccato  
RAL 7044 e Divina3 2459, Hippy 637 Sedia in  
acciaio laccato RAL 7044 e Divina3 2460

/ Hippy 638 Armchair in RAL 7044 lacquered  
steel and Divina3 2459, Hippy 637 Chair in RAL  
7044 lacquered steel and Divina3 2460



## Realizzazioni / Projects



A



B



C



A, C Nice 2 meet you

Location: Ukraine, Category: Restaurant

B, E, F Garden City Resort

Location: Greece, Category: Hotel

D, G Vienna House Easy

Location: Germany, Category: Hotel



D



E



G



F

Cat. Sedie, chairs  
Poltroncine, armchairs  
Lounge, lounge chairs  
Panchette, benches  
Divani, sofas  
Sgabelli, stools  
Tavoli, tables

Billiani si apre al mondo dell'imbottito con una ricca collezione che include sedia, poltroncina, lounge, sgabello, divanetto, pouf, panca e tavolo. Elementi trasversali sono la crociera e le gambe tondeggianti, mentre poltroncina, lounge e divanetto sono accomunati dallo schienale curvo, a forma di croissant. Una collezione che risponde alle esigenze di quei luoghi che riuniscono in sé funzioni diverse ma sono alla ricerca di una continuità stilistica.

Billiani opened up to the world of upholstery with a rich collection that includes side, arm and lounge chairs, barstool, sofa, pouf, bench and table. Unifying elements are the cross and the rounded legs, while the armchair, lounge chair and sofa share a common curved back, in the shape of a croissant. A collection that meets the needs of those places that bring together different functions but are looking for stylistic continuity.



Croissant 569 Panchetta in faggio naturale e Credo 2284, Croissant 572 Lounge in faggio tinto RAL 7044 e Credo 2395, Croissant 592 Pouf in faggio tinto e MDF laccato RAL 7033,

Croissant 577 Sgabello in faggio naturale e Credo 2284, Croissant 571 Poltroncina in faggio tinto RAL 7044 e Divina3 2460



/ Croissant 569 Bench in natural beechwood and Credo 2284, Croissant 572 Lounge chair in RAL 7044 stained beechwood and Credo 2395, Croissant 592 Pouf in RAL 7033 stained

beechwood and lacquered MDF, Croissant 577 Barstool in natural beechwood and Credo 2284, Croissant 571 Armchair in RAL 7044 stained beechwood and Divina3 2460



Croissant 570 Sedie in faggio naturale e Credo  
2285, Croissant 590 Tavolo in faggio naturale  
e MDF laccato RAL 7044

/ Croissant 570 Chairs in natural beechwood  
and Credo 2285, Croissant 590 Table in natural  
beechwood and RAL 7044 lacquered MDF





Croissant 579 Sgabello in faggio tinto RAL 7044 e Credo 2282, Croissant 572 Lounge in faggio tinto RAL 7033 e Credo 2282, Croissant 592

Pouf in faggio tinto e MDF laccato RAL 7033, Croissant 573 Divano in faggio tinto RAL 7044 e Credo 2282





/ Croissant 579 Stool in RAL 7044 stained  
beechwood and Credo 2282, Croissant 572  
Lounge chair in RAL 7033 stained beechwood  
and Credo 2282, Croissant 592 Pouf in RAL

7033 stained beechwood and lacquered MDF,  
Croissant 573 Sofa in RAL 7044 stained  
beechwood and Credo 2282





Croissant 571 Poltroncine in faggio naturale  
e tinto RAL 7044, Divina3 2459 e 2460,  
Croissant 564 Pouf in faggio naturale

e Divina3 2459 / Croissant 571 Armchairs in  
natural and RAL 7044 stained beechwood,  
Divina3 2459 and 2460, Croissant 564 Pouf  
in natural beechwood and Divina3 2459



Croissant 564 Pouf in faggio tinto NCS S 1070 Y80R e Credo 2281, Croissant 591 Tavolo in faggio tinto NCS S 1070 Y80R e MDF laccato RAL 7044

/ Croissant 564 Pouf in NCS S 1070 Y80R stained beechwood and Credo 2281, Croissant 591 Table in NCS S 1070 Y80R stained beechwood and RAL 7044 lacquered MDF



Croissant 578 Sgabello in faggio tinto NCS S 1070 Y80R e Credo 2281, Croissant 577 Sgabello in faggio naturale e Credo 2284

/ Croissant 578 Barstool in NCS S 1070 Y80R stained beechwood and Credo 2281, Croissant 577 Barstool in natural beechwood and Credo 2284



# Realizzazioni / Projects



A



B



C

A	Taiyo Sushi Lounge	Location: Italy, Category: Restaurant
B	Hífen	Location: Portugal, Category: Restaurant
C	Bistrot Cento61	Location: Italy, Category: Restaurant
D, E	The Studio Hotel	Location: Sweden, Category: Hotel
F	Wilma Wunder	Location: Germany, Category: Cafe



D



E



F

Cat. Tavoli, tables

L'idea per Grapevine viene dai tralci delle viti e dalla volontà di replicare la loro naturale torsione sul fusto dei tavoli. Le gambe, tutte uguali, sono poste al centro del tavolo e ruotate di 90° in successione. Ne deriva un disegno scultoreo di grande dinamismo, che appare diverso a seconda del punto di vista dell'osservatore. Pensata inizialmente in noce, un legno nodoso dal colore intenso, la base è stata poi declinata in faggio e in diverse varianti metalliche conquistando una versatilità che la rende adatta ai più diversi contesti - dagli ambienti più sofisticati all'outdoor.

The idea for Grapevine comes from vine branches and the desire to replicate their natural twist on a table base. The legs, all the same, are placed in the center of the table and rotated 90° in succession. The result is a sculptural design of great dynamism, which appears different according to the observer's point of view. Initially conceived in knotty walnut, with its intense colour, the base was then developed to include beech and in different metal finishes, achieving a versatility that makes it suitable for the most diverse contexts - from the most sophisticated to outdoor environments.





Grapevine 760 Tavolo in faggio sbiancato,  
Grapevine 761 Tavolo in noce, Grapevine 766  
Tavolo in faggio e MDF laccati RAL 7044,

Grapevine 764 Tavolo in faggio  
e MDF laccati RAL 3004



/ Grapevine 760 Table in bleached  
beechwood, Grapevine 761 Table in walnut,  
Grapevine 766 Table in RAL 7044 lacquered

beechwood and MDF, Grapevine 764 Table  
in RAL 3004 lacquered beechwood and MDF



Grapevine 760 Tavolo in noce, Grapevine  
766 Tavolo in faggio e MDF laccati RAL 3004,  
Grapevine 761 Tavolo in faggio e MDF laccati  
RAL 7016

/ Grapevine 760 Table in walnut, Grapevine 766  
Table in RAL 3004 lacquered beechwood and  
MDF, Grapevine 761 Table in RAL 7016 lacque-  
red beechwood and MDF



Grapevine 802 Tavolo in acciaio laccato RAL 9017 e marmo di Carrara, Grapevine 800 Tavolo in acciaio laccato RAL 9017 e MDF laccato RAL 7044

/ Grapevine 802 Table in RAL 9017 lacquered steel and Carrara marble, Grapevine 800 Table in RAL 9017 lacquered steel and RAL 7044 lacquered MDF





Cat. Tavoli, tables

Lilliput è una collezione di tavolini da caffè in legno massello di frassino nata da un dettaglio costruttivo. Tutto ruota attorno all'incastro a pettine delle gambe, che sorreggono un piano rotondo. A congiungere i due elementi sono due pomelli in frassino naturale, particolari estetici che svelano il sistema di tenuta e quello, elementare, di assemblaggio. E proprio la facilità di montaggio e smontaggio è ciò che rende questi tavolini versatili, comodi da spedire e rapidi da mettere in opera.

Lilliput is a collection of solid ashwood coffee tables born from a single design feature. Everything revolves around the comb joint of the legs, which support a round top. The two elements are joined by two knobs in natural ash, aesthetic details that reveal the sealing system and the basic assembly system. And the ease of assembly and disassembly is what makes these coffee tables versatile, easy to transport, and quick to install.









Cat. Appendiabiti, coat-stands

Omaggio al grande design italiano, Tango è un appendiabiti in frassino formato da sei elementi ritorti attorno a uno snodo centrale. Proprio la giuntura è stata lo spunto da cui è partito il designer finlandese Timo Ripatti, che seguendo i dettami del minimalismo scandinavo, ha puntato a non usare viti né raccordi di alcun tipo tra gli elementi, che sono fresati e semplicemente incastrati tra loro.

A tribute to great Italian design, Tango is an ashwood coat-stand made of six poles twisted around a central joint. The joint was the starting point for Finnish designer Timo Ripatti; he followed the dictates of Scandinavian minimalism, and aimed not to use screws or fittings of any kind between the poles, which are milled and simply fitted together.







# Marcel

Design: Kazuhide Takahama, 1974

Cat. Tavoli, tables

Kazuhide Takahama progettò il tavolino Marcel negli anni Settanta, usando solo tondino di metallo e vetro. Un oggetto semplicissimo che non ha subito il passare del tempo, e che oggi Billiani riedita, con l'aiuto degli eredi del maestro giapponese, in una più vasta gamma di formati e finiture.

Kazuhide Takahama designed the Marcel coffee table in the seventies, using only metal rod and glass. A very simple piece that has not suffered over time, and which today Billiani re-proposes, with the help of the heirs of the Japanese master, in a wider range of formats and finishes.



Marcel 473 Tavolo in acciaio carbonio e vetro fumé, Marcel 474 Tavolo in acciaio e MDF laccati RAL 7044, Marcel 472 Tavolo in acciaio laccato RAL 7016 e marmo di Carrara

/ Marcel 473 Table in carbon steel and smoked glass, Marcel 474 Table in RAL 7044 lacquered steel and MDF, Marcel 472 Table in RAL 7016 lacquered steel and Carrara marble







Marcel 474 Tavolo in acciaio e MDF laccati  
RAL 7016, Marcel 471 Tavolo in acciaio  
laccato RAL 7016 e marmo Guatemala

/ Marcel 474 Table in RAL 7016 lacquered  
steel and MDF, Marcel 471 Table in RAL 7016  
lacquered steel and Guatemala marble



# Designer Stories

Billiani e i designer.  
Un dialogo che continua, all'insegna del buon design.  
/ Billiani and designers. A dialogue that continues,  
under the banner of good design.

and colour.  
colour has  
es;  
the domestic  
abric  
; basic  
s such as



“Il design  
è una cosa  
seria”

«Design is a serious matter»

## Werther Toffoloni

Nato nel 1930 a Udine, dove si è spento nel 2017, si è dedicato per

più di cinquant'anni all'insegnamento e alla progettazione industriale.

Werther Toffoloni è stato un grande creatore di sedie. Tra i primi industrial designer friulani, Toffoloni ha segnato la storia di molte realtà locali con la sua idea di design come “cosa seria, basata sulla correttezza del prodotto – cioè sulla comodità, sulla resistenza e sulla qualità della forma”.

Toffoloni individua nella tradizione il punto di forza di quello che tra gli anni Cinquanta e i Sessanta sta iniziando a imporsi come il triangolo della sedia. Non a caso tra le sue prime realizzazioni c'è il restyling della Marocca, la tipica sedia friulana con sedile impagliato, rivisitata prima di tutto per capire quale poteva essere il risultato di un'operazione del genere: reinterpretare un prodotto tradizionale “con un po' di attenzione al disegno”.

La capacità di far evolvere le forme tradizionali per renderle appetibili al mercato diventerà la cifra stilistica di Toffoloni, nonché il motivo per cui Billiani lo coinvolge a partire dal 2004 con la richiesta di creare per l'azienda, entrata da poco nell'universo del design, prodotti inediti ma rassicuranti. Sedie che con la loro serietà raccontano un pezzo di storia del distretto.

and colour.  
colour has  
as;  
the domestic  
fabric  
; basic  
s such as

## Werther Toffoloni

Born in 1930 in Udine, where he passed away in 2017, he dedicated himself to teaching and industrial design for more than fifty years.

Werther Toffoloni was a great chair maker. Among the first industrial designers from Friuli, Toffoloni was involved in the histories of many local manufacturers with his idea of design as “a serious matter, based on the correctness of the product – that is, on comfort, resistance and quality of form”.

Toffoloni identified in tradition the strength of what, through the fifties and sixties, was starting to establish itself as the chair triangle. It is no coincidence that among his first creations there was the restyling of the Marocca, the typical Friulian chair with straw seat, revisited, first of all, to understand what could be the result of such an operation: reinterpreting a traditional term “with a little attention to design”.

The ability to evolve traditional shapes to make them attractive to the market would become Toffoloni's stylistic code, as well as the reason why Billiani commissioned him from 2004 with the brief to create for the company, recently arrived in the universe of design, fresh but reassuring products. Chairs that with their seriousness tell a piece of local history.

Special



and colour.  
colour has  
es;  
the domestic  
abric  
; basic  
s such as

## Emilio Nanni

Bolognese classe 1955, nella sua carriera ha ricevuto menzioni, premi e riconoscimenti.

Il più recente è il Red Dot Design Award per la sedia Fratina di Billiani.

Emilio Nanni è il nome che ricorre più spesso nel catalogo di Billiani. Architetto, designer e artista, Nanni è un prolifico disegnatore di sedie: nella sua carriera ne ha disegnate a decine, “per una sorta di sfida alla citazione di Mies van der Rohe, che diceva che è molto più difficile disegnare una sedia che progettare un grattacielo”.

Disegnare una sedia significa intraprendere un progetto che concentra in sé molti elementi, dal rapporto con i propri modelli di riferimento (che nel caso di Nanni sono i maestri del Movimento Moderno) al ruolo del mercato. Nelle sedie disegnate per Billiani, il filo conduttore è il senso di compiutezza dato dalla proporzione perfetta, ottenuta attraverso il dimensionamento d'insieme, il confronto con il legno, la capacità di evidenziare la qualità della lavorazione, la definizione del dettaglio e delle finenze costruttive. Pur essenziali, le sedie di Nanni riescono così a trasmettere garbo e morbidezza, dando l'impressione di esistere da sempre.





and colour.  
colour has  
es;  
the domestic  
abric  
; basic  
s such as

## Emilio Nanni

Bolognese born in 1955, in his career received mentions, prizes and awards. The most recent is Red Dot Design Award for Billiani's Fratina chair.

Emilio Nanni is the name that crops up most often in the Billiani catalogue. Architect, designer and artist, Nanni is a prolific designer of chairs: during his career, he has designed dozens of them, “for a sort of challenge to the quote by Mies van der Rohe, who said that it is much more difficult to design a chair than to design a skyscraper”.

Designing a chair means undertaking a project that concentrates many elements, from the relationship with its reference models (which in the case of Nanni are the masters of the Modern Movement) to market influences. In his chairs designed for Billiani, the common thread is the sense of completeness given by perfect proportioning, obtained through the overall sizing, the comparison with the wood, the ability to highlight the quality of the workmanship, the definition of the detail and the construction refinements. Although essential, Nanni's chairs thus manage to convey grace and softness, giving the impression of having always existed.

## Cristina Celestino

Architetto e designer, Cristina Celestino è nata a Pordenone nel 1980, vive e lavora a Milano.

Il suo lavoro spazia dalla direzione artistica alla progettazione di interni e prodotto.

Cristina Celestino è una designer dal tocco delicato e dallo sguardo terso e contemporaneo, cui si unisce una conoscenza enciclopedica del design italiano.

Fin dai tempi degli studi in architettura a Venezia è attratta dagli interni disegnati dai grandi protagonisti del Novecento dove il lavoro dell'architetto si amplia fino ad accogliere gli arredi e i più piccoli dettagli.

L'adorazione per il design inizia così e prende prima la forma del collezionismo, poi quella della progettazione, che spazia dagli interni ai prodotti che li arredano.

Tra sensibilità architettonica e innovazione formale, il risultato è un design colto che intreccia “la conoscenza data dallo studio dell'architettura, il gusto per il bello che viene dal collezionismo, una visione emozionale ed evocativa del prodotto accompagnata dalla costante ricerca di una componente innovativa”. È questo modo di esprimersi unico e personale, anche attraverso un inedito uso di materiali tradizionali e scelte cromatiche coraggiose, che ha spinto Billiani ad affidarle nel 2019 la direzione artistica dell'azienda.

and colour.  
colour has  
es;  
the domestic  
abric  
; basic  
s such as

## Cristina Celestino

Cristina Celestino was born in Pordenone in 1980. Architect and designer, she lives and works in

Milan. Her activity ranges from artistic direction to interior and product design.

Cristina Celestino is a designer with a delicate touch and a clear and ironic look, which combine with an encyclopedic knowledge of twentieth century Italian design. Ever since she was an architecture student in Venice, she has been attracted by the interiors designed by the twentieth century greats where the architect's work expands to encompass furnishings and the smallest of details.

The love of design begins in this way and first takes the form of collecting, then that of design, ranging from interiors to products. The result of this architectural awareness and formal innovation is a cultured design that intertwines “the knowledge that comes from the study of architecture, the taste for beauty that comes from collecting, an emotional and evocative vision of the product, and the search for an innovative component”.

It is this unique and personal way of expressing herself, which emerges also from the unprecedented use of traditional materials and bold colour choices, that convinced Billiani to entrust Cristina Celestino in 2019 with the artistic direction of the company.



and colour.  
colour has  
as;  
the domestic  
fabric  
; basic  
s such as

“Il design intreccia  
la conoscenza, il  
gusto per il bello, una  
visione emozionale ed  
evocativa del prodotto  
accompagnata dalla  
ricerca costante  
di una componente  
innovativa”

«Design intertwines knowledge, the taste for beauty,  
an emotional and evocative vision of the product, and the  
search for an innovative component»

# Finiture

## Finishes

Billiani è da sempre sinonimo di legno e colore. E se legno vuol dire frassino, faggio, rovere e noce, il colore ha tre anime: quella ironica e fresca delle tinte forti, quella istituzionale e rigorosa dei toni classici, quella domestica e intima delle sfumature più eleganti. Di tutte e tre è espressione la collezione tessuti, che affianca texture basiche a trame più calde e sofisticate come il bouclé italiano.

Billiani has always been synonymous with wood and colour. And if wood means ash, beech, oak and walnut, colour has three souls: the ironic and fresh one of bold shades; the institutional and rigorous one of classic tones; the domestic and intimate one of the most elegant hues. The fabric collection is the expression of all three, combining basic textures with warmer and more sophisticated ones such as Italian bouclé.

## FAGGIO / BEECHWOOD

Sbiancato  
FG 0078Naturale  
FG 0003Fango  
FG 0027Noce  
FG 0012Wengé  
FG 0025

## FRASSINO / ASHWOOD

Sbiancato  
FR 0065Naturale  
FR 0076Fango  
FR 0028Tabacco  
FR 0035Wengé  
FR 0047

## NOCE / WALNUT



Noce

## ROVERE / OAKWOOD

Sbiancato  
RO 0034Naturale  
RO 0046Fango  
RO 0028Tabacco  
RO 0035Wengé  
RO 0047



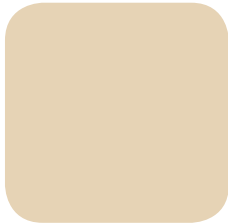
TINTA O LACCATURA DEL LEGNO / WOOD STAINING OR LACQUERING



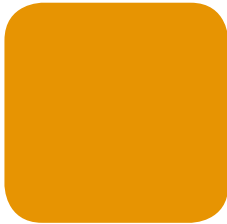
Laccato  
/ Lacquered

Tinto  
/ Stained

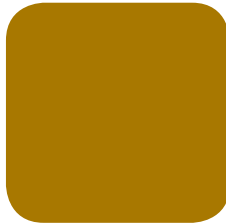
Le essenze legno, faggio, frassino e rovere sono disponibili in versione tinta o laccata, nei seguenti colori. / Beechwood, ashwood and oakwood are available lacquered or stained in the following colours.



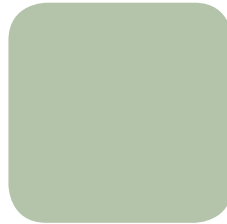
Avorio chiaro  
RAL 1015



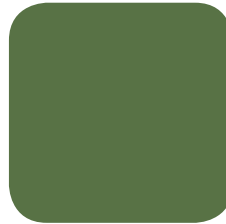
Giallo polenta  
RAL 1006



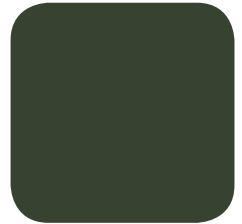
Giallo curry  
RAL 1027



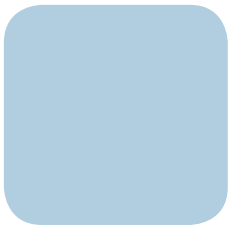
Salvia  
NCS S 2010-G10Y



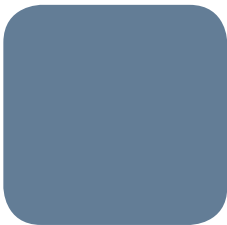
Verde reseda  
RAL 6011



Verde cromo  
RAL 6020



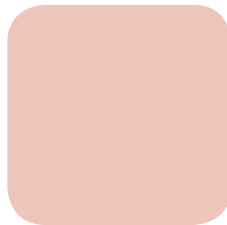
Azzurro pepe  
NCS S 1020-R90B



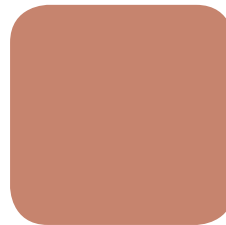
Blu colomba  
RAL 5014



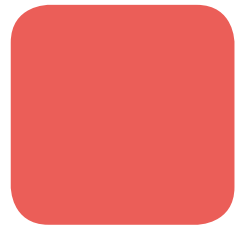
Blu Billiani  
NCS S 7020-R80B



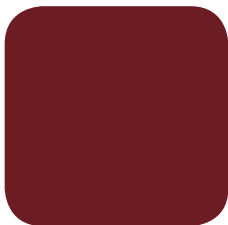
Rosa pallido  
NCS S 1015-Y80R



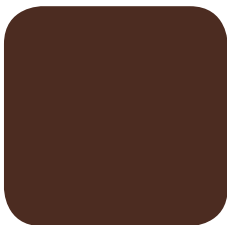
Rosso beige  
RAL 3012



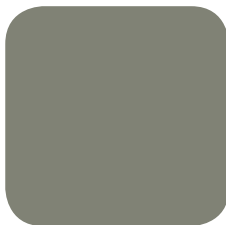
Corallo  
NCS S 1070-Y80R



Rosso porpora  
RAL 3004



Marrone mogano  
RAL 8016



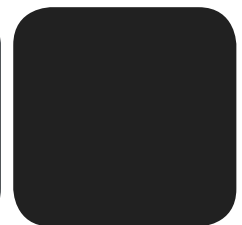
Grigio cemento  
RAL 7033



Grigio seta  
RAL 7044



Grigio antracite  
RAL 7016



Nero traffico  
RAL 9017

LUNA (Cat. Select)



0989



0660



0621



2377



1002



2376



2190



2378

FLAMENCO (Cat. Select)



0897



2379



0871



2380



1052



0898



1492



0929

KING L KAT (Cat. Essential)



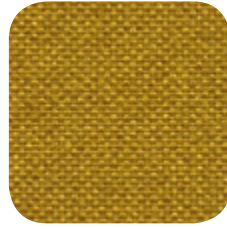
1810



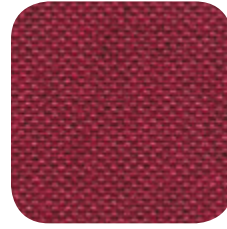
1119



1091



1092



1838



1088



1093



2381

LASER N (Cat. Essential)



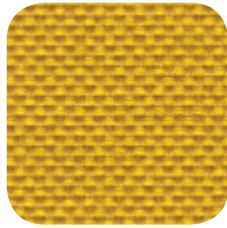
2382



2383



2384



2344



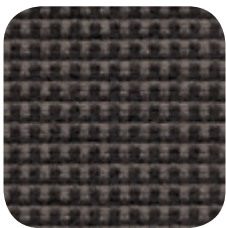
2385



2356

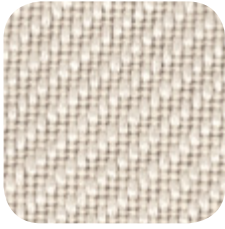


2386



2387

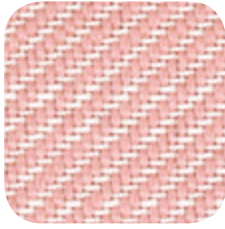
TWILLTWENTY (Cat. Tailored)



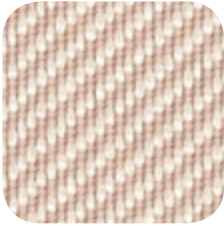
2388



2392



2390



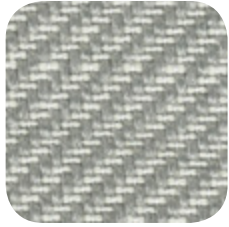
2275



2274



2391

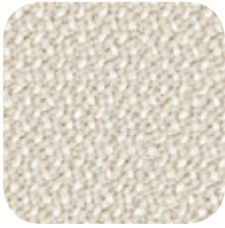


2389

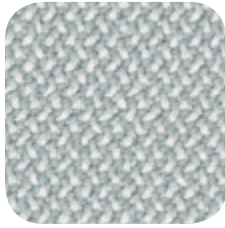


2393

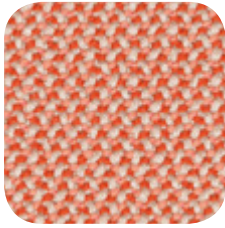
CREDO (Cat. Tailored)



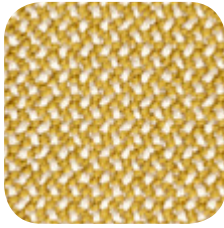
2394



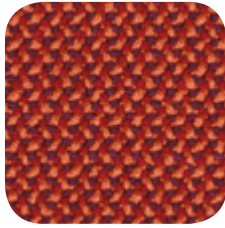
2284



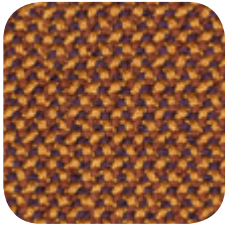
2285



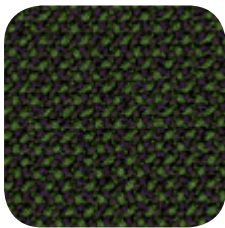
2282



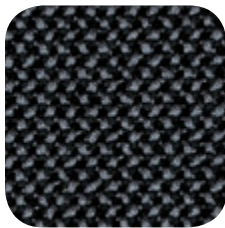
2281



2283

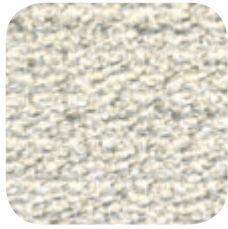


2395



2396

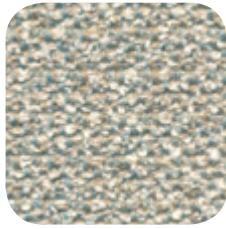
BOEMIAN (Cat. Select)



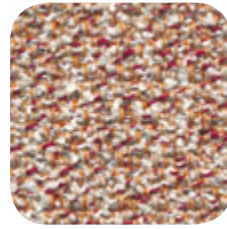
2400



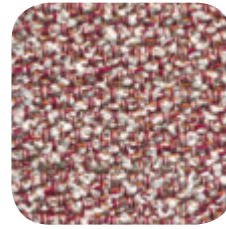
2401



2402



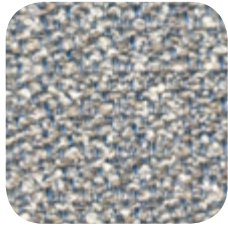
2403



2404



2405



2406



2407

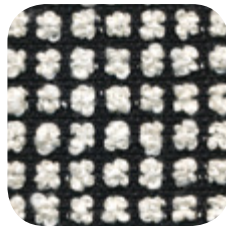
BRIONNE (Cat. Tailored)



2408



2409



2410



2411

LINARI (Cat. Tailored)



2412



2413



2414



2415

OMBRA (Cat. Tailored)



2467



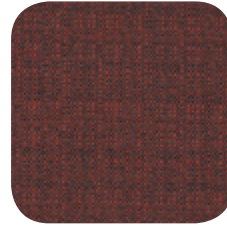
2505



2461



2468



2466



2462



2504



2503

DIVINA3 (Cat. Couture)



2294



2459



2458



2460



1454



1519



2481



2502

SOFT UNITO (Cat. Tailored)



2397



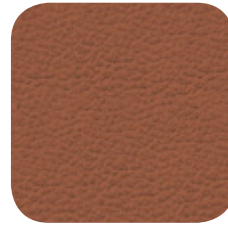
0953



2399



2398



0643



1181



0954



2439

330

# Ecopelle / Eco-leather

INCA (Cat. Essential)



1507



1191



0928



2366



2367



1649

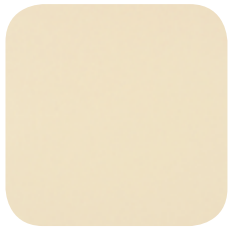


1878



0924

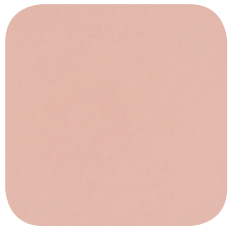
MAGNUM (Cat. Select)



2368



2369



2370



2371



2372



2373



2374

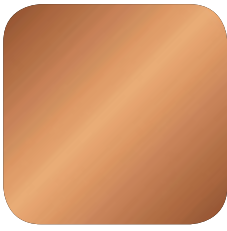


2375





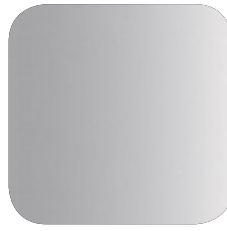
Ottonato  
/ Brass



Ramato  
/ Copper



Carbonio  
/ Carbon



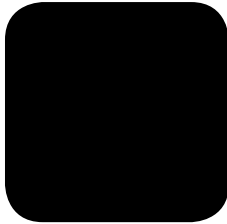
Cromato  
/ Chromed

---

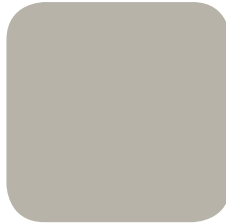
LACCATO / LACQUERED (Altri colori scala RAL disponibili su richiesta / Non standard RAL colours available on request)



Bianco  
RAL 9016



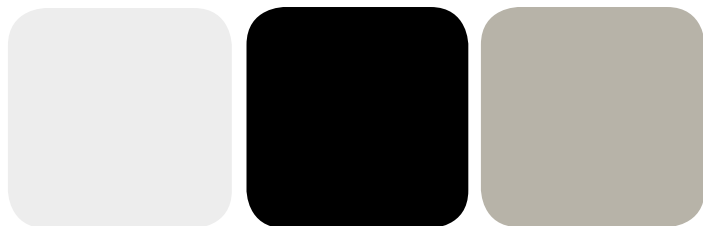
Nero  
RAL 9017



Grigio seta  
RAL 7044

## Piani tavoli / Table tops

## MDF LAMINATO / LAMINATED MDF



RAL 9016

RAL 9017

RAL 7044

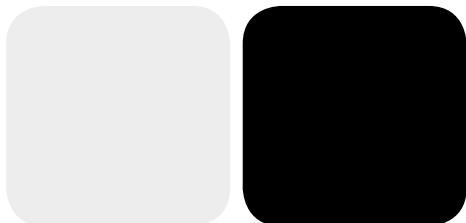
## HPL



RAL 9016

RAL 9017

## MDF LACCATO / LAQUERED MDF (Altri colori disponibili su richiesta / Non standard colours available on request)



RAL 9016

RAL 9017

## IMPIALLACCIATO FAGGIO / BEECH VENEER

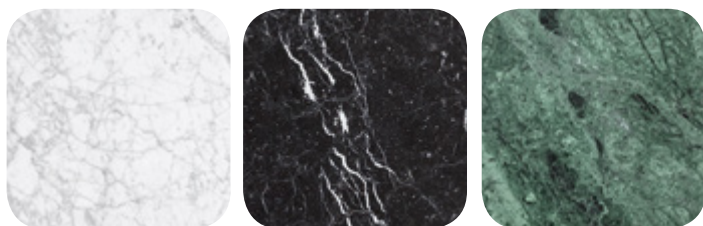
Sbiancato  
FG 0078Naturale  
FG 0003Fango  
FG 0027Noce  
FG 0012Wengé  
FG 0025

## IMPIALLACCIATO NOCE / WALNUT VENEER



Noce

## MARMO / MARBLE



Carrara

Marquina

Guatemala

## VETRO / GLASS

Extrachiaro  
/ Extra-clearFumé  
/ Smoked

Le seguenti finiture sono abbinabili soltanto ad alcuni prodotti.  
 / The following finishes can be matched only with some products.

**CORDA / ROPE (Disponibile solo per Load e Sey / Available only for Load and Sey)**



Bianco / White  
001

Nero / Black  
006

Marrone / Brown  
003

Canapa / Hemp  
005

Giallo / Yellow  
002

Rosso / Red  
007

**CORDINO IN CELLULOSA / CELLULOSE ROPE (Disponibile solo per Fratina e Vincent v. G. / Available only for Fratina and Vincent v. G.)**

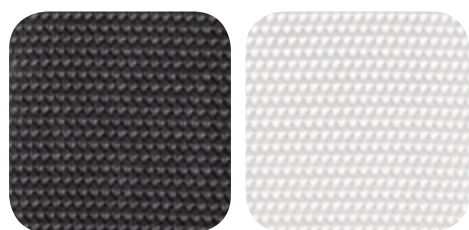


Antracite / Anthracite  
0529

Testa di moro / Dark brown  
0543

Avana / Hemp  
0530

**CINGHIE / STRAPS (Disponibile solo per Fratina / Available only for Fratina)**



Nero / Black  
1701

Bianco / White  
1702

Le seguenti finiture sono abbinabili soltanto ad alcuni prodotti.  
/ The following finishes can be matched only with some products.

- Disponibile solo per / Available only for Marimba, Vincent v. G., Fratina
- Disponibile solo per / Available only for Marimba, Vincent v. G.
- Disponibile solo per / Available only for Marimba

---

CUOINETTO / HIDE



0537 •••



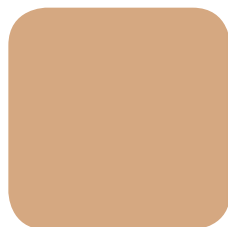
1545 •••



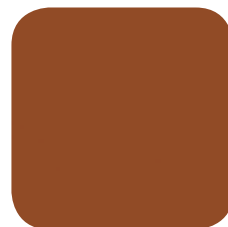
2335 •



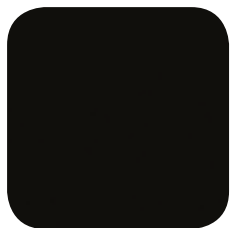
2334 •



2336 •



2340 ••



0536 •••

Le seguenti finiture sono abbinabili soltanto a Marimba.  
 / The following finishes can be matched only with Marimba.

---

PIENO FIORE / FULL-GRAIN LEATHER



2419

2421

2420

2463

FELTRO / FELT



2506

2510

2508

2471

2470

2509



2507

2511

# Technical overview

ALOE, p. 342

ARAGOSTA, p. 343



432



432/1



434



434/1



580



582

BLAZER, p. 344



583



584



632



633



634



630

CAFÈ, p. 346



631



629



232



233



234



460

COROLLA, p. 347



460/1



461



461/1



462



462/1



270

CROISSANT, p. 348



271



272



273



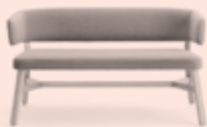
570



571



572



573



569



564



593



592



577

DOLL, p. 350



578



579



590



591



060



550



551



552



553



554



558



559



560



561



562



563



557



555



556



164



165



751



750



752

DRUM, p. 352



070



071



078



079



076



077



074



075



072



073



081



082

FITT CLASSIC, p. 354



020



021



030



022



023



031



024



025



032



026



027



033

FITT HUG, p. 356



029



028



044



045



046



047



048



049



050



051



052



053

FOGLIA, pag. 358



054



055



056



057



428



429

FRATINA, p. 359



680



681



250



251



252



253

FRISÉE, p. 360



254



255



620



622



623



625

GRADISCA, pag. 361



626



628



617



619



766



775

GRAPEVINE, pag. 362



770



764



761



760



777



791





803



804



802



801



800



805

GREEN, p. 364

HIPPY, p. 365



812



001



002



635



636



637

LAYER, p. 366



638



615



639



090



093



094

LILLIPUT, p. 367

LOAD, p. 368



095



310



311



312



640



641



642



643



612



647



645



649

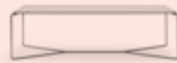
MARCEL, p. 369



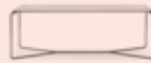
646



648



470



471



472



473

MARIMBA, p. 370

NORDICA, pag. 371



474



110



114



112



113



600

PUCCIO, p. 372



601



710



711



712



713



714



715



716



717



718



719



720

SPY, p. 374



725



721



722



660



650



651



659



658



656



661



652



657



662



663



664



665



658



654

SEY, p. 376



657



653



653



655



690

TAKE, p. 377

TANGO, p. 378



691



693



694



585



586



700

TOCCATA & FUGA, p. 379

TRACY, p. 380



701



530



531



565



566



567

VINCENT V. G., p. 381



568



595



596



597



598



440

W., p. 382



441



444



603



604



605



608

WHITE, p. 383



606



607



130



132



134



135



432



432/1



434



434/1

432 Sedia in faggio  
/ Chair in beechwood

Box × 2 pcs: 0.30 m<sup>3</sup>  
Peso/Weight: 4.7 kg

432/1 Sedia in faggio,  
con sedile imbottito  
/ Chair in beechwood,  
with upholstered seat

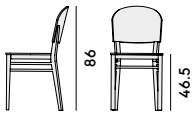
Box × 2 pcs: 0.30 m<sup>3</sup>  
Peso/Weight: 5.0 kg

434 Sgabello in faggio  
/ Barstool in beechwood

Box × 1 pcs: 0.31 m<sup>3</sup>  
Peso/Weight: 6.1 kg

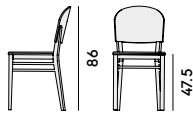
434/1 Sgabello in faggio,  
con sedile imbottito  
/ Barstool in beechwood,  
with upholstered seat

Box × 1 pcs: 0.31 m<sup>3</sup>  
Peso/Weight: 6.4 kg



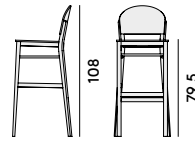
41/49

43



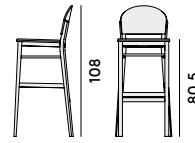
41/49

43



41/51

43



41/51

43



580



582



583



584

580 Sedia in frassino  
/ Chair in ashwood

582 Lounge in frassino,  
con sedile imbottito  
/ Lounge chair in ashwood,  
with upholstered seat

583 Tavolo in frassino  
/ Table in ashwood

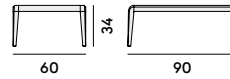
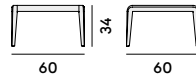
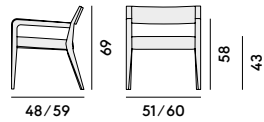
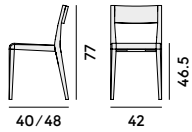
584 Tavolo in frassino  
/ Table in ashwood

Box × 2 pcs: 0.30 m<sup>3</sup>  
Peso/Weight: 5.7 kg

Box × 1 pcs: 0.29 m<sup>3</sup>  
Peso/Weight: 9.0 kg

Box × 1 pcs: 0.15 m<sup>3</sup>  
Peso/Weight: 6.5 kg

Box × 1 pcs: 0.23 m<sup>3</sup>  
Peso/Weight: 9.5 kg



# Blazer



632



633



634



630



631



629



232



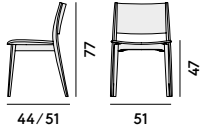
233



234

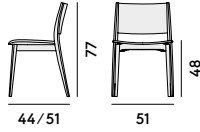
632 Sedia in faggio  
/ Chair in beechwood

Box × 2 pcs: 0.38 m<sup>3</sup>  
Peso/Weight: 6.2 kg



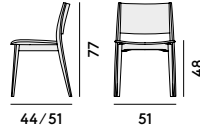
633 Sedia in faggio,  
con sedile imbottito  
/ Chair in beechwood,  
with upholstered seat

Box × 2 pcs: 0.38 m<sup>3</sup>  
Peso/Weight: 6.4 kg



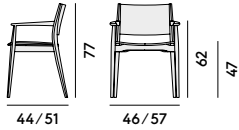
634 Sedia in faggio, con sedile  
e schienale imbottiti  
/ Chair in beechwood, with  
upholstered seat and back

Box × 2 pcs: 0.38 m<sup>3</sup>  
Peso/Weight: 6.7 kg



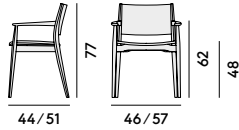
630 Poltroncina in faggio  
/ Armchair in beechwood

Box × 1 pcs: 0.26 m<sup>3</sup>  
Peso/Weight: 7.1 kg



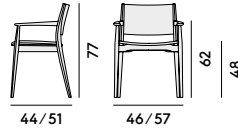
631 Poltroncina in faggio,  
con sedile imbottito  
/ Armchair in beechwood,  
with upholstered seat

Box × 1 pcs: 0.26 m<sup>3</sup>  
Peso/Weight: 7.4 kg



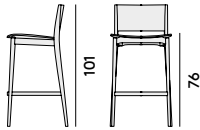
629 Poltroncina in faggio, con  
sedile e schienale imbottiti  
/ Armchair in beechwood, with  
upholstered seat and back

Box × 1 pcs: 0.26 m<sup>3</sup>  
Peso/Weight: 6.9 kg



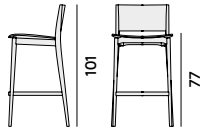
232 Sgabello in faggio  
/ Barstool in beechwood

Box × 1 pcs: 0.24 m<sup>3</sup>  
Peso/Weight: 6.3 kg



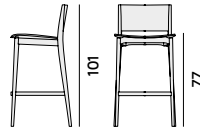
233 Sgabello in faggio,  
con sedile imbottito  
/ Barstool in beechwood,  
with upholstered seat

Box × 1 pcs: 0.24 m<sup>3</sup>  
Peso/Weight: 6.5 kg



234 Sgabello in faggio, con  
sedile e schienale imbottiti  
/ Barstool in beechwood, with  
upholstered seat and back

Box × 1 pcs: 0.24 m<sup>3</sup>  
Peso/Weight: 6.8 kg





460



460/1



461



461/1



462



462/1

460 Sedia in faggio  
/ Chair in beechwood

Box × 2 pcs: 0.37 m<sup>3</sup>  
Peso/Weight: 4.4 kg

460/1 Sedia in faggio,  
con sedile imbottito  
/ Chair in beechwood,  
with upholstered seat

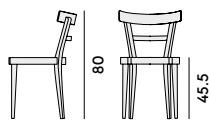
Box × 2 pcs: 0.37 m<sup>3</sup>  
Peso/Weight: 4.7 kg

461 Poltroncina in faggio  
/ Armchair in beechwood

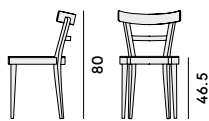
Box × 1 pcs: 0.23 m<sup>3</sup>  
Peso/Weight: 5.1 kg

461/1 Poltroncina in faggio,  
con sedile imbottito  
/ Armchair in beechwood,  
with upholstered seat

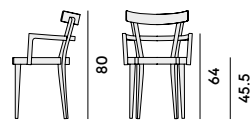
Box × 1 pcs: 0.23 m<sup>3</sup>  
Peso/Weight: 5.4 kg



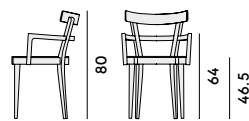
40/48.5 44



40/48.5 44



40/48.5 44/51



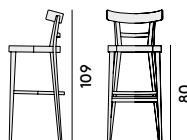
40/48.5 44/51

462 Sgabello in faggio  
/ Barstool in beechwood

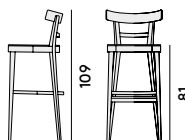
Box × 1 pcs: 0.29 m<sup>3</sup>  
Peso/Weight: 6.0 kg

462/1 Sgabello in faggio,  
con sedile imbottito  
/ Barstool in beechwood,  
with upholstered seat

Box × 1 pcs: 0.29 m<sup>3</sup>  
Peso/Weight: 6.3 kg



42.5/46 44



42.5/46 44





270



271



272



273

270 Poltroncina in faggio o frassino, imbottita / Armchair in beech or ashwood, upholstered

Box × 1 pcs: 0.33 m<sup>3</sup>  
Peso/Weight: 10.4 kg

271 Lounge in faggio o frassino, imbottita / Lounge chair in beech or ashwood, upholstered

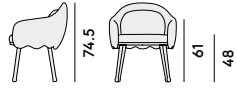
Box × 1 pcs: 0.42 m<sup>3</sup>  
Peso/Weight: 14.4 kg

272 Bergère in faggio o frassino, imbottita / Bergère in beech or ashwood, upholstered

Box × 1 pcs: 0.66 m<sup>3</sup>  
Peso/Weight: 16.3 kg

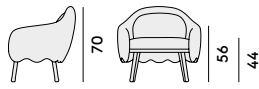
273 Divano in faggio o frassino, imbottito / Sofa in beech or ashwood, upholstered

Box × 1 pcs: 0.79 m<sup>3</sup>  
Peso/Weight: 24.5 kg



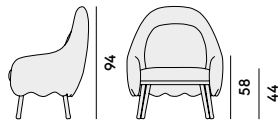
33.5/63.5

44/64



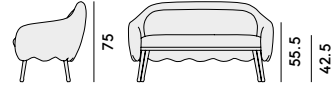
40/69

60/80



40/78

58/84.5



42/75

105/131.5

# Croissant



570



571



572



573



569



564



593



592



577



578



579



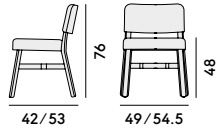
590



591

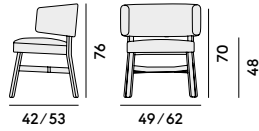
570 Sedia in faggio, imbottita  
/ Chair in beechwood, upholstered

Box × 2 pcs: 0.38 m<sup>3</sup>  
Peso/Weight: 5.5 kg



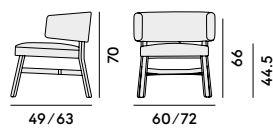
571 Poltroncina in faggio, imbottita  
/ Armchair in beechwood, upholstered

Box × 1 pcs: 0.30 m<sup>3</sup>  
Peso/Weight: 7.1 kg



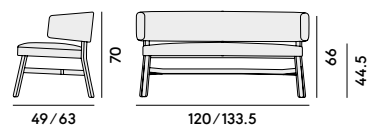
572 Lounge in faggio, imbottita  
/ Lounge chair in beechwood, upholstered

Box × 1 pcs: 0.41 m<sup>3</sup>  
Peso/Weight: 9.0 kg



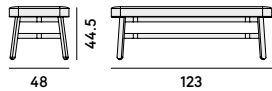
573 Divano in faggio, imbottito  
/ Sofa in beechwood, upholstered

Box × 1 pcs: 0.68 m<sup>3</sup>  
Peso/Weight: 15.0 kg



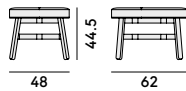
569 Panchetta in faggio, imbottita  
/ Bench in beechwood, upholstered

Box × 1 pcs: 0.28 m<sup>3</sup>  
Peso/Weight: 13.2 kg



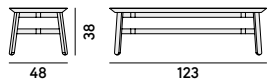
564 Pouf in faggio, imbottito  
/ Pouf in beechwood, upholstered

Box × 1 pcs: 0.15 m<sup>3</sup>  
Peso/Weight: 8.0 kg



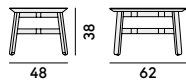
593 Panchetta in faggio,  
con sedile in MDF  
/ Bench in beechwood,  
with seat in MDF

Box × 1 pcs: 0.28 m<sup>3</sup>  
Peso/Weight: 15.6 kg



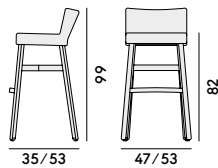
592 Pouf in faggio,  
con sedile in MDF  
/ Pouf in beechwood,  
with seat in MDF

Box × 1 pcs: 0.15 m<sup>3</sup>  
Peso/Weight: 9.1 kg



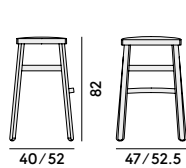
577 Sgabello in faggio, imbottito  
/ Barstool in beechwood,  
upholstered

Box × 1 pcs: 0.29 m<sup>3</sup>  
Peso/Weight: 6.5 kg



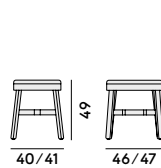
578 Sgabello in faggio, imbottito  
/ Barstool in beechwood,  
upholstered

Box × 1 pcs: 0.25 m<sup>3</sup>  
Peso/Weight: 6.0 kg



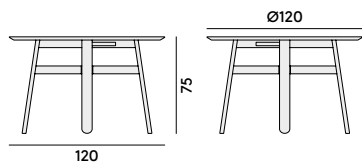
579 Sgabello in faggio, imbottito  
/ Stool in beechwood, upholstered

Box × 2 pcs: 0.26 m<sup>3</sup>  
Peso/Weight: 5.0 kg



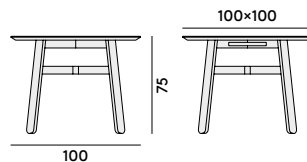
590 Tavolo con struttura in faggio e piano in MDF o HPL  
/ Table with frame in beechwood and top in MDF or HPL

2 Box × 1 pcs: 0.26 m<sup>3</sup>  
Peso/Weight: 35.0 kg



591 Tavolo con struttura in faggio e piano in MDF o HPL  
/ Table with frame in beechwood and top in MDF or HPL

2 Box × 1 pcs: 0.26 m<sup>3</sup>  
Peso/Weight: 33.0 kg



# Doll



060



550



551



552



553



554



558



559



560



561



562



563



557



555



556



164



165



751



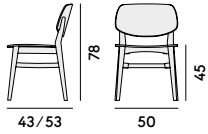
750



752

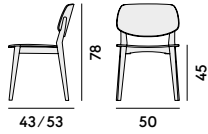
060 Sedia in frassino  
/ Chair in ashwood

Box × 2 pcs: 0.34 m<sup>3</sup>  
Peso/Weight: 5.5 kg



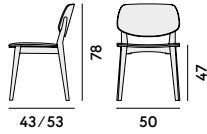
550 Sedia in faggio  
/ Chair in beechwood

Box × 2 pcs: 0.34 m<sup>3</sup>  
Peso/Weight: 5.5 kg



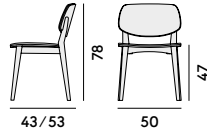
551 Sedia in faggio, con sedile  
imbottito / Chair in beechwood,  
with upholstered seat

Box × 2 pcs: 0.34 m<sup>3</sup>  
Peso/Weight: 6.2 kg



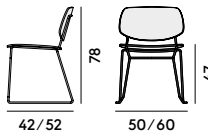
552 Sedia in faggio, con sedile  
e schienale imbottiti / Chair in  
beechwood, with upholstered  
seat and back

Box × 2 pcs: 0.34 m<sup>3</sup>  
Peso/Weight: 7 kg



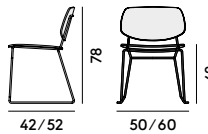
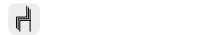
553 Sedia con struttura in acciaio  
/ Chair with steel frame

Box × 2 pcs: 0.38 m<sup>3</sup>  
Peso/Weight: 6.5 kg



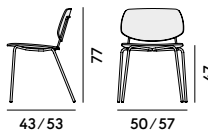
554 Sedia con struttura in acciaio,  
con sedile e schienale imbottiti  
/ Chair with steel frame, with  
upholstered seat and back

Box × 2 pcs: 0.38 m<sup>3</sup>  
Peso/Weight: 7.5 kg



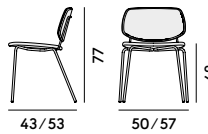
558 Sedia con struttura in acciaio  
/ Chair with steel frame

Box × 2 pcs: 0.38 m<sup>3</sup>  
Peso/Weight: 5.2 kg



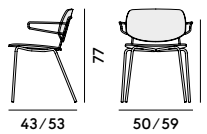
559 Sedia con struttura in acciaio,  
con sedile e schienale imbottiti  
/ Chair with steel frame, with  
upholstered seat and back

Box × 2 pcs: 0.38 m<sup>3</sup>  
Peso/Weight: 6.2 kg



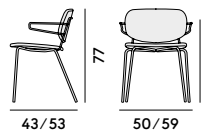
560 Poltroncina con struttura  
in acciaio / Armchair with  
steel frame

Box × 2 pcs: 0.38 m<sup>3</sup>  
Peso/Weight: 6.5 kg



561 Poltroncina con struttura in  
acciaio, con sedile e schienale  
imbottiti / Armchair with steel  
frame, with upholstered seat  
and back

Box × 2 pcs: 0.38 m<sup>3</sup>  
Peso/Weight: 7.5 kg



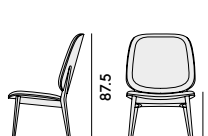
562 Lounge in faggio, imbottita  
/ Lounge chair in beechwood,  
upholstered

Box × 2 pcs: 0.39 m<sup>3</sup>  
Peso/Weight: 6.5 kg



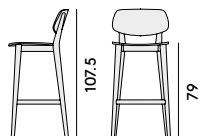
563 Lounge high in faggio, imbottita  
/ High-backed lounge chair in  
beechwood, upholstered

Box × 1 pcs: 0.42 m<sup>3</sup>  
Peso/Weight: 13 kg



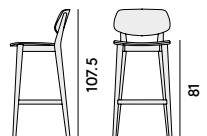
557 Sgabello in faggio  
/ Barstool in beechwood

Box × 1 pcs: 0.29 m<sup>3</sup>  
Peso/Weight: 6.1 kg



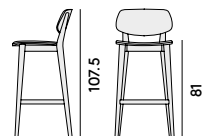
555 Sgabello in faggio, con sedile  
imbottito / Barstool in beechwood,  
with upholstered seat

Box × 1 pcs: 0.29 m<sup>3</sup>  
Peso/Weight: 6.8 kg



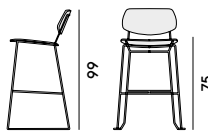
556 Sgabello in faggio, con sedile  
e schienale imbottiti / Barstool in  
beechwood, with upholstered  
seat and back

Box × 1 pcs: 0.29 m<sup>3</sup>  
Peso/Weight: 7.6 kg



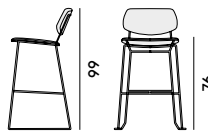
164 Sgabello con struttura in acciaio  
/ Barstool with steel frame

Box × 1 pcs: 0.24 m<sup>3</sup>  
Peso/Weight: 7.6 kg



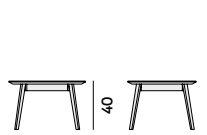
165 Sgabello con struttura in acciaio,  
con sedile e schienale imbottiti  
/ Barstool with steel frame,  
with upholstered seat and back

Box × 1 pcs: 0.24 m<sup>3</sup>  
Peso/Weight: 8.2 kg



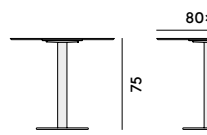
751 Tavolo con struttura  
in faggio e piano in MDF  
/ Table with beechwood  
frame and top in MDF

Box × 1 pcs: 0.20 m<sup>3</sup>  
Peso/Weight: 10.3 kg



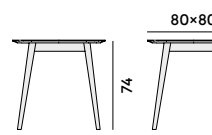
750 Tavolo con struttura in  
acciaio e piano in MDF o HPL  
/ Table with steel frame  
and top in MDF or HPL

2 Box × 1 pcs: 0.19 m<sup>3</sup>  
Peso/Weight: 17.5 kg



752 Tavolo con struttura in  
faggio e piano in MDF o HPL  
/ Table with beechwood frame  
and top in MDF or HPL

2 Box × 1 pcs: 0.53 m<sup>3</sup>  
Peso/Weight: 15 kg



# Drum



070



071



078



079



076



077



074



075



072



073



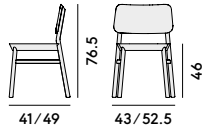
081



082

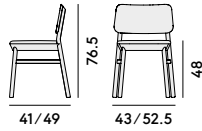
070 Sedia in faggio  
/ Chair in beechwood

Box × 2 pcs: 0.34 m<sup>3</sup>  
Peso/Weight: 5.3 kg



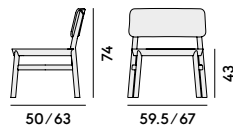
071 Sedia in faggio, con sedile imbottito/Chair in beechwood, with upholstered seat

Box × 2 pcs: 0.34 m<sup>3</sup>  
Peso/Weight: 6.3 kg



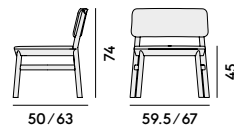
078 Lounge in faggio  
/ Lounge chair in beechwood

Box × 2 pcs: 0.45 m<sup>3</sup>  
Peso/Weight: 7.4 kg



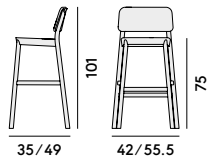
079 Lounge in faggio, con sedile imbottito / Lounge chair in beechwood, with upholstered seat

Box × 2 pcs: 0.45 m<sup>3</sup>  
Peso/Weight: 8.4 kg



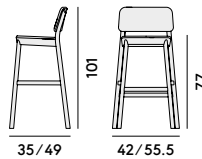
076 Sgabello in faggio  
/ Barstool in beechwood

Box × 1 pcs: 0.31 m<sup>3</sup>  
Peso/Weight: 6 kg



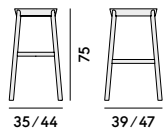
077 Sgabello in faggio, con sedile imbottito/Barstool in beechwood, with upholstered seat

Box × 1 pcs: 0.31 m<sup>3</sup>  
Peso/Weight: 7 kg



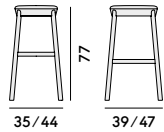
074 Sgabello in faggio  
/ Barstool in beechwood

Box × 1 pcs: 0.17 m<sup>3</sup>  
Peso/Weight: 5 kg



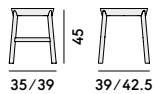
075 Sgabello in faggio, con sedile imbottito/Barstool in beechwood, with upholstered seat

Box × 1 pcs: 0.17 m<sup>3</sup>  
Peso/Weight: 6 kg



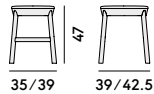
072 Sgabello in faggio  
/ Stool in beechwood

Box × 2 pcs: 0.17 m<sup>3</sup>  
Peso/Weight: 3.7 kg



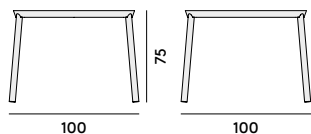
073 Sgabello in faggio, con sedile imbottito/ Stool in beechwood, with upholstered seat

Box × 2 pcs: 0.17 m<sup>3</sup>  
Peso/Weight: 4.7 kg



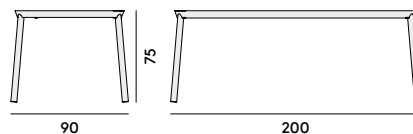
081 Tavolo in faggio  
/ Table in beechwood

2 Box × 1 pcs: 0.15 m<sup>3</sup>  
Peso/Weight: 21 kg



082 Tavolo in faggio  
/ Table in beechwood

2 Box × 1 pcs: 0.25 m<sup>3</sup>  
Peso/Weight: 35 kg



# Fitt Classic



020



021



030



022



023



031



024



025



032



026



027



033



029

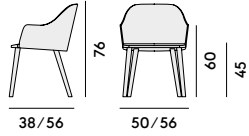


028



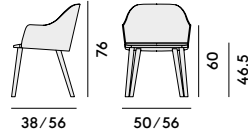
020 Poltroncina in frassino  
/ Armchair in ashwood

Box x 1 pcs: 0.27 m<sup>3</sup>  
Peso/Weight: 6.5 kg



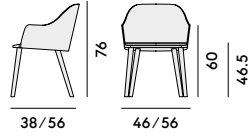
021 Poltroncina in frassino,  
con sedile imbottito  
/ Armchair in ashwood,  
with upholstered seat

Box x 1 pcs: 0.27 m<sup>3</sup>  
Peso/Weight: 7.8 kg



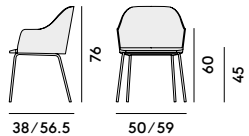
030 Poltroncina in frassino, imbottita  
/ Armchair in ashwood,  
upholstered

Box x 1 pcs: 0.27 m<sup>3</sup>  
Peso/Weight: 8.4 kg



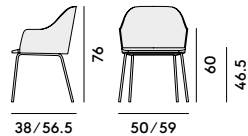
022 Poltroncina con struttura  
in acciaio/ Armchair with  
steel frame

Box x 1 pcs: 0.28 m<sup>3</sup>  
Peso/Weight: 7.5 kg



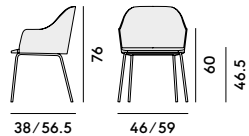
023 Poltroncina con struttura in  
acciaio e sedile imbottito  
/ Armchair with steel frame  
and upholstered seat

Box x 1 pcs: 0.28 m<sup>3</sup>  
Peso/Weight: 8.8 kg



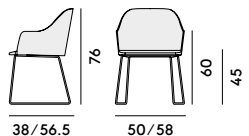
031 Poltroncina con struttura  
in acciaio, imbottita  
/ Armchair with steel frame,  
upholstered

Box x 1 pcs: 0.28 m<sup>3</sup>  
Peso/Weight: 9.4 kg



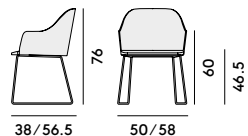
024 Poltroncina con struttura  
in acciaio/ Armchair with  
steel frame

Box x 1 pcs: 0.27 m<sup>3</sup>  
Peso/Weight: 8.4 kg



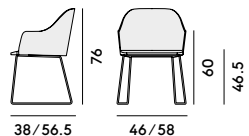
025 Poltroncina con struttura in  
acciaio e sedile imbottito  
/ Armchair with steel frame  
and upholstered seat

Box x 1 pcs: 0.27 m<sup>3</sup>  
Peso/Weight: 9.7 kg



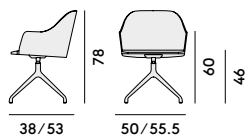
032 Poltroncina con struttura  
in acciaio, imbottita  
/ Armchair with steel frame,  
upholstered

Box x 1 pcs: 0.27 m<sup>3</sup>  
Peso/Weight: 10.3 kg



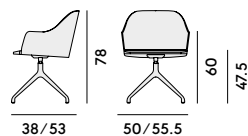
026 Poltroncina con base  
girevole in acciaio  
/ Armchair with steel  
swivel base

Box x 1 pcs: 0.25 m<sup>3</sup>  
Peso/Weight: 8.4 kg



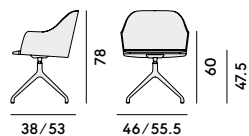
027 Poltroncina con base girevole  
in acciaio e sedile imbottito  
/ Armchair with steel swivel base  
and upholstered seat

Box x 1 pcs: 0.25 m<sup>3</sup>  
Peso/Weight: 9.7 kg



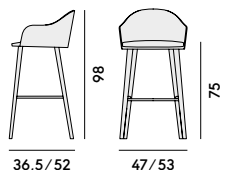
033 Poltroncina con base  
girevole in acciaio, imbottita  
/ Armchair with steel swivel  
base, upholstered

Box x 1 pcs: 0.25 m<sup>3</sup>  
Peso/Weight: 10.3 kg



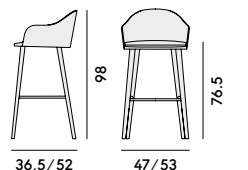
029 Sgabello in frassino  
/ Barstool in ashwood

Box x 1 pcs: 0.32 m<sup>3</sup>  
Peso/Weight: 7.4 kg



028 Sgabello in frassino,  
con sedile imbottito  
/ Barstool in ashwood,  
with upholstered seat

Box x 1 pcs: 0.32 m<sup>3</sup>  
Peso/Weight: 8.7 kg



# Fitt Hug



044



045



046



047



048



049



050



051



052



053



054



055



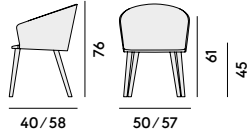
056



057

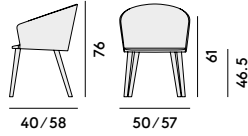
044 Poltroncina in frassino  
/ Armchair in ashwood

Box x 1 pcs: 0.27 m<sup>3</sup>  
Peso/Weight: 6.6 kg



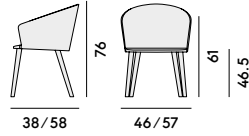
045 Poltroncina in frassino,  
con sedile imbottito  
/ Armchair in ashwood,  
with upholstered seat

Box x 1 pcs: 0.27 m<sup>3</sup>  
Peso/Weight: 7.9 kg



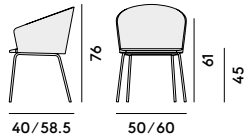
046 Poltroncina in frassino, imbottita  
/ Armchair in ashwood,  
upholstered

Box x 1 pcs: 0.27 m<sup>3</sup>  
Peso/Weight: 8.5 kg



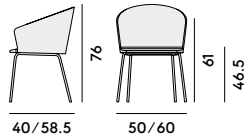
047 Poltroncina con struttura  
in acciaio/ Armchair with  
steel frame

Box x 1 pcs: 0.28 m<sup>3</sup>  
Peso/Weight: 7.6 kg



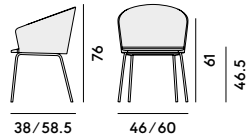
048 Poltroncina con struttura in  
acciaio e sedile imbottito  
/ Armchair with steel frame  
and upholstered seat

Box x 1 pcs: 0.28 m<sup>3</sup>  
Peso/Weight: 8.9 kg



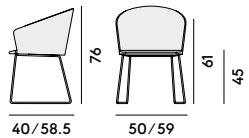
049 Poltroncina con struttura  
in acciaio, imbottita  
/ Armchair with steel frame,  
upholstered

Box x 1 pcs: 0.28 m<sup>3</sup>  
Peso/Weight: 9.5 kg



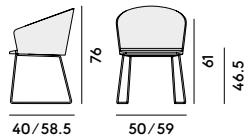
050 Poltroncina con struttura  
in acciaio/ Armchair with  
steel frame

Box x 1 pcs: 0.27 m<sup>3</sup>  
Peso/Weight: 8.5 kg



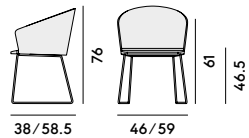
051 Poltroncina con struttura in  
acciaio e sedile imbottito  
/ Armchair with steel frame  
and upholstered seat

Box x 1 pcs: 0.27 m<sup>3</sup>  
Peso/Weight: 9.8 kg



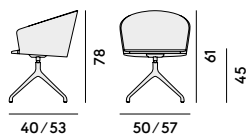
052 Poltroncina con struttura  
in acciaio, imbottita  
/ Armchair with steel frame,  
upholstered

Box x 1 pcs: 0.27 m<sup>3</sup>  
Peso/Weight: 10.4 kg



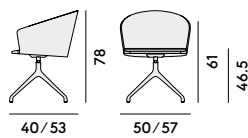
053 Poltroncina con base  
girevole in acciaio  
/ Armchair with steel  
swivel base

Box x 1 pcs: 0.25 m<sup>3</sup>  
Peso/Weight: 8.5 kg



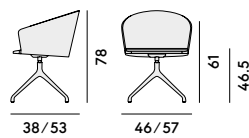
054 Poltroncina con base girevole  
in acciaio e sedile imbottito  
/ Armchair with steel swivel base  
and upholstered seat

Box x 1 pcs: 0.25 m<sup>3</sup>  
Peso/Weight: 9.8 kg



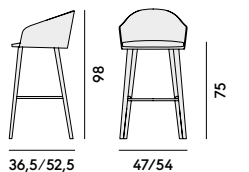
055 Poltroncina con base  
girevole in acciaio, imbottita  
/ Armchair with steel swivel  
base, upholstered

Box x 1 pcs: 0.25 m<sup>3</sup>  
Peso/Weight: 10.4 kg



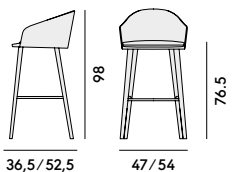
056 Sgabello in frassino  
/ Barstool in ashwood

Box x 1 pcs: 0.32 m<sup>3</sup>  
Peso/Weight: 7.5 kg



057 Sgabello in frassino,  
con sedile imbottito  
/ Barstool in ashwood,  
with upholstered seat

Box x 1 pcs: 0.32 m<sup>3</sup>  
Peso/Weight: 8.8 kg





428



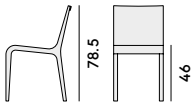
429

428 Sedia in rovere  
/ Chair in oakwood

Box × 2 pcs: 0.29 m<sup>3</sup>  
Peso/Weight: 3.7 kg

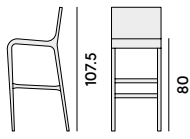
429 Sgabello in rovere  
/ Barstool in oakwood

Box × 1 pcs: 0.29 m<sup>3</sup>  
Peso/Weight: 4.8 kg



41/54

41



41/49

41



680



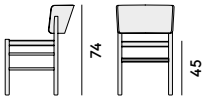
681

680 Sedia in frassino, con sedile imbottito/ Chair in ashwood, with upholstered seat

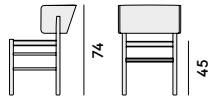
Box × 2 pcs: 0.37 m<sup>3</sup>  
Peso/Weight: 5.4 kg

681 Poltroncina in frassino, con sedile imbottito/ Armchair in ashwood, with upholstered seat

Box × 1 pcs: 0.26 m<sup>3</sup>  
Peso/Weight: 5.6 kg



40/54.5      42.5/48.5



40/54.5      42.5/51.5

## Frisée



250



251



252



253



254



255

250 Sedia in faggio o frassino  
/ Chair in beech or ashwood

Box × 2 pcs: 0.34 m<sup>3</sup>  
Peso/Weight: 4.5 kg

251 Sedia in faggio o frassino,  
con sedile imbottito  
/ Chair in beech or ashwood,  
with upholstered seat

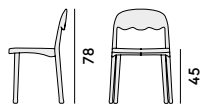
Box × 2 pcs: 0.34 m<sup>3</sup>  
Peso/Weight: 5.6 kg

252 Poltroncina in faggio o frassino  
/ Armchair in beech or ashwood

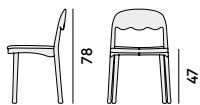
Box × 1 pcs: 0.28 m<sup>3</sup>  
Peso/Weight: 5.8 kg

253 Poltroncina in faggio o  
frassino, con sedile imbottito  
/ Armchair in beech or ashwood,  
with upholstered seat

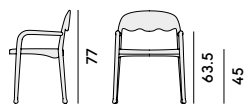
Box × 1 pcs: 0.28 m<sup>3</sup>  
Peso/Weight: 7.1 kg



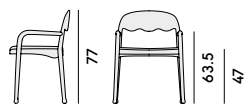
39/51 45/53.5



39/51 45/53.5



45/55.5 47/61



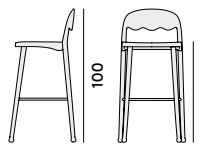
45/55.5 47/61

254 Sgabello in faggio o frassino  
/ Barstool in beech or ashwood

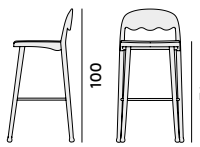
Box × 1 pcs: 0.28 m<sup>3</sup>  
Peso/Weight: 6.4 kg

255 Sgabello in faggio o  
frassino, con sedile imbottito  
/ Barstool in beech or ashwood,  
with upholstered seat

Box × 1 pcs: 0.28 m<sup>3</sup>  
Peso/Weight: 7.5 kg



32/48.5 42/52.5



32/48.5 42/52.5



620



622



623



625



626



628



617



619

620 Sedia in faggio  
/ Chair in beechwood

Box × 2 pcs: 0.29 m<sup>3</sup>  
Peso/Weight: 4.5 kg

622 Sedia in faggio, con  
sedile e schienale imbottiti  
/ Chair in beechwood, with  
upholstered seat and back

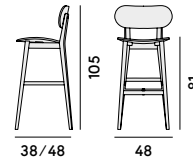
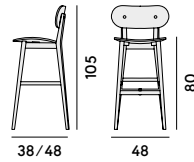
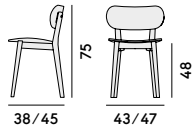
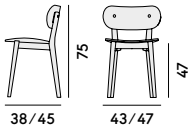
Box × 2 pcs: 0.29 m<sup>3</sup>  
Peso/Weight: 5.5 kg

623 Sgabello in faggio  
/ Barstool in beechwood

Box × 1 pcs: 0.29 m<sup>3</sup>  
Peso/Weight: 6 kg

625 Sgabello in faggio, con  
sedile e schienale imbottiti  
/ Barstool in beechwood, with  
upholstered seat and back

Box × 1 pcs: 0.29 m<sup>3</sup>  
Peso/Weight: 7 kg



626 Sgabello in faggio  
/ Stool in beechwood

Box × 1 pcs: 0.12 m<sup>3</sup>  
Peso/Weight: 4.4 kg

628 Sgabello in faggio,  
con sedile imbottito  
/ Stool in beechwood,  
with upholstered seat

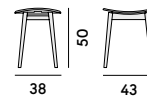
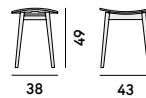
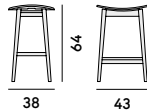
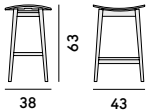
Box × 1 pcs: 0.12 m<sup>3</sup>  
Peso/Weight: 5 kg

617 Sgabello in faggio  
/ Stool in beechwood

Box × 2 pcs: 0.26 m<sup>3</sup>  
Peso/Weight: 3.5 kg

619 Sgabello in faggio,  
con sedile imbottito  
/ Stool in beechwood,  
with upholstered seat

Box × 2 pcs: 0.26 m<sup>3</sup>  
Peso/Weight: 4 kg



# Grapevine



766

Top: ○ Ø50 □ 50×50



775

Top: ○ Ø120



770

Top: □ 120×80, 160×80



764

Top: ○ Ø70, Ø80 □ 70×70, 80×80



761



760



777



791



803

Top: ○ Ø50 □ 50×50



804

Top: ○ Ø120



802

Top: ○ Ø70, Ø80 □ 70×70, 80×80



801



800



805

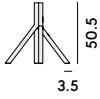


812



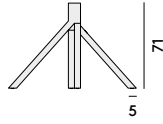
766 Base tavolo in noce o faggio  
/Table frame in walnut  
or beechwood

Box x 1 pcs: 0.09 m<sup>3</sup>  
Peso/Weight: 4.4 kg



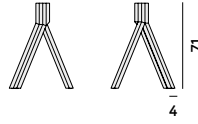
775 Base tavolo in noce o faggio  
/Table frame in walnut  
or beechwood

Box x 1 pcs: 0.42 m<sup>3</sup>  
Peso/Weight: 17.6 kg



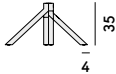
770 Base tavolo in noce o faggio  
/Table frame in walnut  
or beechwood

Box x 1 pcs: 0.21 m<sup>3</sup>  
Peso/Weight: 13 kg



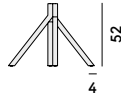
764 Base tavolo in noce o faggio  
/Table frame in walnut  
or beechwood

Box x 1 pcs: 0.11 m<sup>3</sup>  
Peso/Weight: 6.8 kg



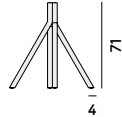
761 Base tavolo in noce o faggio  
/Table frame in walnut  
or beechwood

Box x 1 pcs: 0.16 m<sup>3</sup>  
Peso/Weight: 7.7 kg



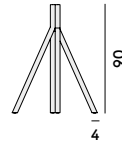
760 Base tavolo in noce o faggio  
/Table frame in walnut  
or beechwood

Box x 1 pcs: 0.21 m<sup>3</sup>  
Peso/Weight: 8.2 kg



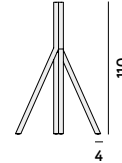
777 Base tavolo in noce o faggio  
/Table frame in walnut  
or beechwood

Box x 1 pcs: 0.32 m<sup>3</sup>  
Peso/Weight: 8.4 kg



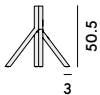
791 Base tavolo in noce o faggio  
/Table frame in walnut  
or beechwood

Box x 1 pcs: 0.5 m<sup>3</sup>  
Peso/Weight: 8.8 kg



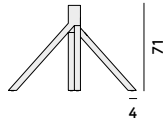
803 Base tavolo in acciaio  
/Table frame in steel

Box x 1 pcs: 0.09 m<sup>3</sup>  
Peso/Weight: 4.8 kg



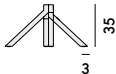
804 Base tavolo in acciaio  
/Table frame in steel

Box x 1 pcs: 0.42 m<sup>3</sup>  
Peso/Weight: 11.7 kg



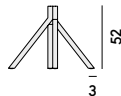
802 Base tavolo in acciaio  
/Table frame in steel

Box x 1 pcs: 0.11 m<sup>3</sup>  
Peso/Weight: 6.5 kg



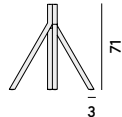
801 Base tavolo in acciaio  
/Table frame in steel

Box x 1 pcs: 0.16 m<sup>3</sup>  
Peso/Weight: 7.5 kg



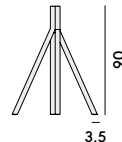
800 Base tavolo in acciaio  
/Table frame in steel

Box x 1 pcs: 0.21 m<sup>3</sup>  
Peso/Weight: 8.6 kg



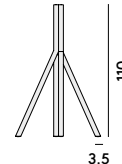
805 Base tavolo in acciaio  
/Table frame in steel

Box x 1 pcs: 0.32 m<sup>3</sup>  
Peso/Weight: 11.5 kg



812 Base tavolo in acciaio  
/Table frame in steel

Box x 1 pcs: 0.5 m<sup>3</sup>  
Peso/Weight: 12 kg

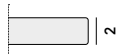


Marmo bianco o nero  
/White or black marble



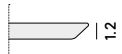
cm	kg	m <sup>3</sup>	pcs
Ø 50	12	0.05	1 pcs
Ø 70	23	0.06	1 pcs
Ø 80	30	0.07	1 pcs
Ø 120 *	68	0.17	1 pcs
50 x 50	15	0.05	1 pcs
70 x 70	29	0.06	1 pcs
80 x 80	38	0.07	1 pcs

Impiallacciato noce o faggio  
/Walnut or beech veneer



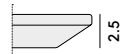
cm	kg	m <sup>3</sup>	pcs
Ø 50	3	0.01	1 pcs
Ø 70	6	0.02	1 pcs
Ø 80	7.5	0.03	1 pcs
Ø 120	17	0.06	1 pcs
50 x 50	4	0.01	1 pcs
70 x 70	7.5	0.02	1 pcs
80 x 80	10	0.03	1 pcs
80 x 120	13	0.04	1 pcs
80 x 160	20	0.05	1 pcs

HPL bianco o nero  
/White or black HPL



cm	kg	m <sup>3</sup>	pcs
Ø 50	3.3	0.01	1 pcs
Ø 70	6.4	0.02	1 pcs
Ø 80	8.4	0.03	1 pcs
Ø 120	19	0.06	1 pcs
50 x 50	4.2	0.01	1 pcs
70 x 70	8.3	0.02	1 pcs
80 x 80	10.8	0.03	1 pcs
80 x 120	16.2	0.04	1 pcs
80 x 160	21.5	0.05	1 pcs

MDF laminato  
/Laminated MDF



cm	kg	m <sup>3</sup>	pcs
Ø 50	4	0.01	1 pcs
Ø 70	8	0.02	1 pcs
Ø 80	10	0.03	1 pcs
Ø 120	23	0.06	1 pcs
50 x 50	5	0.01	1 pcs
70 x 70	10	0.02	1 pcs
80 x 80	13	0.03	1 pcs
80 x 120	19.5	0.04	1 pcs
80 x 160	25.5	0.05	1 pcs

MDF laccato  
/Lacquered MDF



cm	kg	m <sup>3</sup>	pcs
Ø 50	4	0.01	1 pcs
Ø 70	8	0.02	1 pcs
Ø 80	10	0.03	1 pcs
Ø 120	23	0.06	1 pcs
50 x 50	5	0.01	1 pcs
70 x 70	10	0.02	1 pcs
80 x 80	13	0.03	1 pcs
80 x 120	19.5	0.04	1 pcs
80 x 160	25.5	0.05	1 pcs

\* Solo per versione Grapevine 804  
/Only for Grapevine 804



001

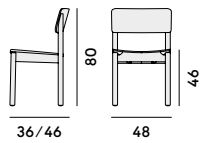


002



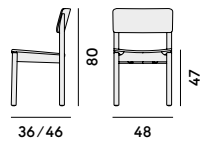
001 Sedia in frassino  
/ Chair in ashwood

Box × 2 pcs: 0.29 m<sup>3</sup>  
Peso/Weight: 6.7 kg



002 Sedia in frassino, con sedile  
imbottito/ Chair in ashwood,  
with upholstered seat

Box × 2 pcs: 0.29 m<sup>3</sup>  
Peso/Weight: 6.8 kg





635



636



637



638



615



639

635 Sedia in faggio, imbottita  
/ Chair in beechwood,  
upholstered

Box × 2 pcs: 0.33 m<sup>3</sup>  
Peso/Weight: 7.0 kg

636 Poltroncina in faggio, imbottita  
/ Armchair in beechwood,  
upholstered

Box × 1 pcs: 0.26 m<sup>3</sup>  
Peso/Weight: 7.7 kg

637 Sedia con struttura  
in acciaio, imbottita  
/ Chair with steel frame,  
upholstered

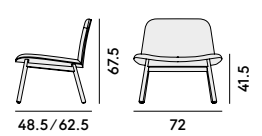
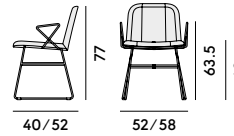
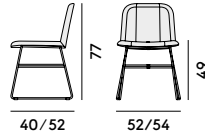
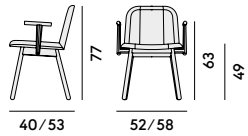
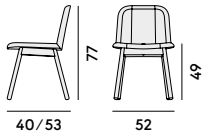
Box × 2 pcs: 0.33 m<sup>3</sup>  
Peso/Weight: 8.0 kg

638 Poltroncina con struttura  
in acciaio, imbottita  
/ Armchair with steel frame,  
upholstered

Box × 1 pcs: 0.26 m<sup>3</sup>  
Peso/Weight: 9.7 kg

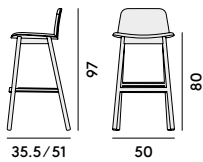
615 Lounge in faggio, imbottita  
/ Lounge chair in beechwood,  
upholstered

Box × 2 pcs: 0.50 m<sup>3</sup>  
Peso/Weight: 10.7 kg



639 Sgabello in faggio, imbottito  
/ Barstool in beechwood,  
upholstered

Box × 1 pcs: 0.29 m<sup>3</sup>  
Peso/Weight: 8.3 kg





090



093



094



095

090 Poltroncina in frassino, imbottita  
/ Armchair in ashwood,  
upholstered

Box × 1 pcs: 0.30 m<sup>3</sup>  
Peso/Weight: 6.2 kg

093 Lounge in frassino, imbottita  
/ Lounge chair in ashwood,  
upholstered

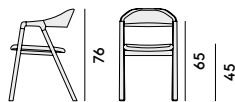
Box × 1 pcs: 0.29 m<sup>3</sup>  
Peso/Weight: 8.5 kg

094 Sgabello in frassino  
/ Barstool in ashwood

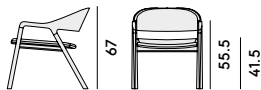
Box × 1 pcs: 0.15 m<sup>3</sup>  
Peso/Weight: 3.9 kg

095 Sgabello in frassino, con sedile  
imbottito/ Barstool in ashwood,  
with upholstered seat

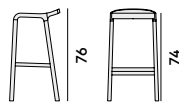
Box × 1 pcs: 0.15 m<sup>3</sup>  
Peso/Weight: 4 kg



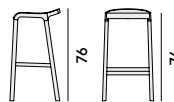
44/55.5      47/54.5



48/67      48/58.5



24/42.5      34/42.5



24/42.5      34/42.5



310



311



312

310 Tavolino in frassino  
/Table in ashwood

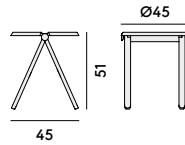
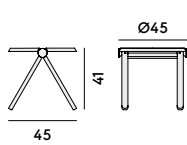
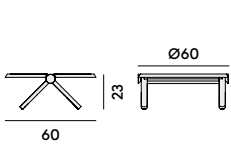
311 Tavolino in frassino  
/Table in ashwood

312 Tavolino in frassino  
/Table in ashwood

Box × 1 pcs: 0.10 m<sup>3</sup>  
Peso/Weight: 4.1 kg

Box × 1 pcs: 0.09 m<sup>3</sup>  
Peso/Weight: 3.1 kg

Box × 1 pcs: 0.12 m<sup>3</sup>  
Peso/Weight: 3.5 kg



# Load



640 Sedia in faggio /Chair in beechwood

641 Sedia in faggio, con sedile imbottito/Chair in beechwood, with upholstered seat

642 Sedia in faggio, con schienale in cima nautica/Chair in beechwood, with woven backrest in marine rope

643 Sedia in faggio, con sedile imbottito e schienale in cima nautica/Chair in beechwood, with upholstered seat and woven backrest in marine rope

612 Lounge in faggio, con sedile imbottito/Lounge chair in beechwood, with upholstered seat

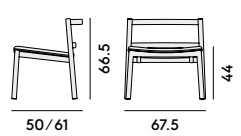
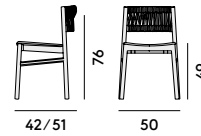
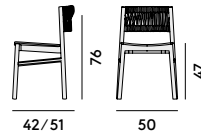
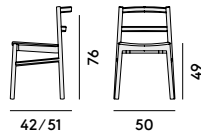
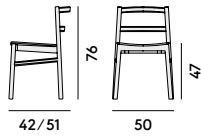
Box × 2 pcs: 0.34 m<sup>3</sup>  
Peso/Weight: 4.8 kg

Box × 2 pcs: 0.34 m<sup>3</sup>  
Peso/Weight: 5.5 kg

Box × 2 pcs: 0.34 m<sup>3</sup>  
Peso/Weight: 5.1 kg

Box × 2 pcs: 0.34 m<sup>3</sup>  
Peso/Weight: 5.8 kg

Box × 2 pcs: 0.50 m<sup>3</sup>  
Peso/Weight: 10.2 kg



647 Lounge in faggio, con sedile imbottito e schienale in cima nautica/Lounge chair in beechwood, with upholstered seat and woven back in marine rope

645 Sgabello in faggio /Barstool in beechwood

649 Sgabello in faggio, con sedile imbottito/Barstool in beechwood, with upholstered seat

646 Sgabello in faggio, con schienale in cima nautica/Barstool in beechwood, with woven backrest in marine rope

648 Sgabello in faggio, con sedile imbottito e schienale in cima nautica/Barstool in beechwood, with upholstered seat and woven backrest in marine rope

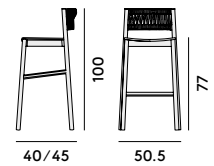
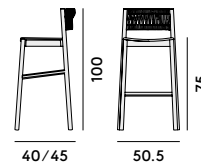
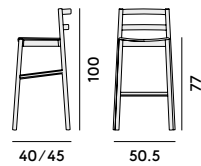
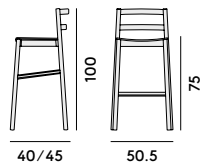
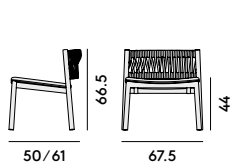
Box × 2 pcs: 0.50 m<sup>3</sup>  
Peso/Weight: 11 kg

Box × 1 pcs: 0.29 m<sup>3</sup>  
Peso/Weight: 7.1 kg

Box × 1 pcs: 0.29 m<sup>3</sup>  
Peso/Weight: 7.8 kg

Box × 1 pcs: 0.29 m<sup>3</sup>  
Peso/Weight: 8.0 kg

Box × 1 pcs: 0.29 m<sup>3</sup>  
Peso/Weight: 8.7 kg





470



471



472



473



474

470 Tavolo con struttura in acciaio  
/Table with steel frame

Box × 1 pcs: 0.33 m<sup>3</sup>  
Peso/Weight: 6.7 kg

471 Tavolo con struttura in acciaio  
/Table with steel frame

Box × 1 pcs: 0.23 m<sup>3</sup>  
Peso/Weight: 5.4 kg

472 Tavolo con struttura in acciaio  
/Table with steel frame

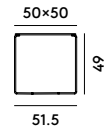
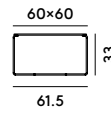
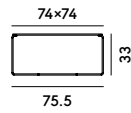
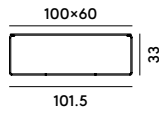
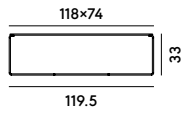
Box × 1 pcs: 0.21 m<sup>3</sup>  
Peso/Weight: 5.0 kg

473 Tavolo con struttura in acciaio  
/Table with steel frame

Box × 1 pcs: 0.14 m<sup>3</sup>  
Peso/Weight: 4.3 kg

474 Tavolo con struttura in acciaio  
/Table with steel frame

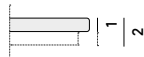
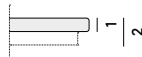
Box × 1 pcs: 0.15 m<sup>3</sup>  
Peso/Weight: 4.2 kg



Vetro extra chiaro o fumé  
/Extra clear or smoked glass

Marmo bianco o verde  
/White or green marble

MDF laccato  
/Lacquered MDF



cm	kg	m <sup>3</sup>	pcs	cm	kg	m <sup>3</sup>	pcs	cm	kg	m <sup>3</sup>	pcs
50 × 50	4.5	0.01	1 pcs	50 × 50	13	0.02	1 pcs	50 × 50	4	0.01	1 pcs
60 × 60	6.5	0.01	1 pcs	60 × 60	18.8	0.03	1 pcs	60 × 60	5.8	0.01	1 pcs
74 × 74	10	0.02	1 pcs	74 × 74	28.8	0.05	1 pcs	74 × 74	8.3	0.02	1 pcs
60 × 100	11	0.02	1 pcs	60 × 100	31.5	0.05	1 pcs	60 × 100	9	0.02	1 pcs
74 × 118	16.2	0.02	1 pcs	74 × 118	46.1	0.08	1 pcs	74 × 118	12.3	0.03	1 pcs

## Marimba



110



114



112



113

110 Sedia in faggio, imbottita  
/ Chair in beechwood, upholstered

Box × 2 pcs: 0.34 m<sup>3</sup>  
Peso/Weight: 5.2 kg

114 Lounge in faggio, imbottita  
/ Lounge chair in beechwood,  
upholstered

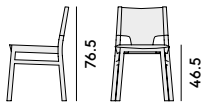
Box × 2 pcs: 0.45 m<sup>3</sup>  
Peso/Weight: 7.2 kg

112 Sgabello in faggio, imbottito  
/ Barstool in beechwood,  
upholstered

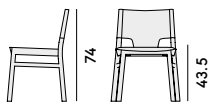
Box × 1 pcs: 0.17 m<sup>3</sup>  
Peso/Weight: 5.2 kg

113 Sgabello in faggio, imbottito  
/ Barstool in beechwood,  
upholstered

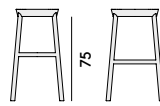
Box × 1 pcs: 0.31 m<sup>3</sup>  
Peso/Weight: 5.8 kg



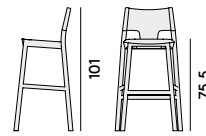
41/52.5 43/52.5



50/66.5 59.5/67



35/44 39/47



35/49 42/55.5





600



601

600 Poltroncina in faggio  
/ Armchair in beechwood

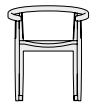
601 Poltroncina in faggio, con  
sedile imbottito / Armchair in  
beechwood, with upholstered seat

Box × 1 pcs: 0.24 m<sup>3</sup>  
Peso / Weight: 5.5 kg

Box × 1 pcs: 0.24 m<sup>3</sup>  
Peso / Weight: 5.6 kg

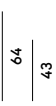


40 / 47.5



71.5

47 / 59



64

43

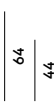


40 / 47.5



71.5

47 / 59



64

44

# Puccio



710



711



712



713



714



715



716



717



718



719



720



725



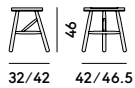
721



722

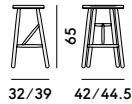
710 Sgabello in frassino  
/ Stool in ashwood

Box × 1 pcs: 0.10 m<sup>3</sup>  
Peso/Weight: 3.6 kg



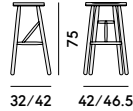
711 Sgabello in frassino  
/ Stool in ashwood

Box × 1 pcs: 0.13 m<sup>3</sup>  
Peso/Weight: 4.7 kg



712 Sgabello in frassino  
/ Barstool in ashwood

Box × 1 pcs: 0.16 m<sup>3</sup>  
Peso/Weight: 4.8 kg



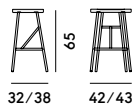
713 Sgabello con struttura in acciaio e sedile in frassino  
/ Barstool with steel frame and seat in ashwood

Box × 1 pcs: 0.10 m<sup>3</sup>  
Peso/Weight: 4.4 kg



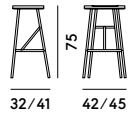
714 Sgabello con struttura in acciaio e sedile in frassino  
/ Stool with steel frame and seat in ashwood

Box × 1 pcs: 0.12 m<sup>3</sup>  
Peso/Weight: 5.5 kg



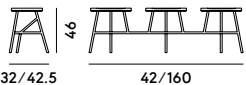
715 Sgabello con struttura in acciaio e sedile in frassino  
/ Barstool with steel frame and seat in ashwood

Box × 1 pcs: 0.16 m<sup>3</sup>  
Peso/Weight: 5.7 kg



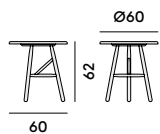
716 Panchetta con struttura in acciaio e sedili in frassino  
/ Bench with steel frame and seats in ashwood

Box × 1 pcs: 0.35 m<sup>3</sup>  
Peso/Weight: 11.6 kg



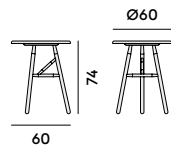
717 Tavolo in frassino  
/ Table in ashwood

2 Box × 1 pcs: 0.17 m<sup>3</sup>  
Peso/Weight: 7.7 kg



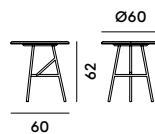
718 Tavolo in frassino  
/ Table in ashwood

2 Box × 1 pcs: 0.22 m<sup>3</sup>  
Peso/Weight: 8.2 kg



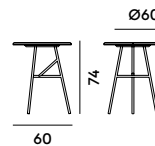
719 Tavolo con struttura in acciaio e piano in frassino  
/ Table with steel frame and top in ashwood

2 Box × 1 pcs: 0.17 m<sup>3</sup>  
Peso/Weight: 7.4 kg



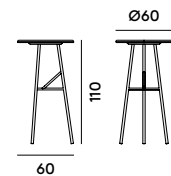
720 Tavolo con struttura in acciaio e piano in frassino  
/ Table with steel frame and top in ashwood

2 Box × 1 pcs: 0.22 m<sup>3</sup>  
Peso/Weight: 7.8 kg



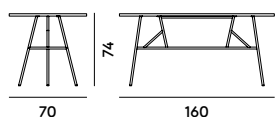
725 Tavolo con struttura in acciaio e piano in frassino  
/ Table with steel frame and top in ashwood

2 Box × 1 pcs: 0.40 m<sup>3</sup>  
Peso/Weight: 9.3 kg



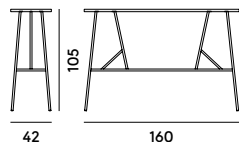
721 Tavolo con struttura in acciaio e piano in frassino  
/ Table with steel frame and top in ashwood

2 Box × 1 pcs: 0.60 m<sup>3</sup>  
Peso/Weight: 17.5 kg



722 Tavolo con struttura in acciaio e piano in frassino  
/ Table with steel frame and top in ashwood

2 Box × 1 pcs: 0.76 m<sup>3</sup>  
Peso/Weight: 27.7 kg



# Spy



660



661



650



651



658



659



652



657



662



656



663



664



665



658



654



657



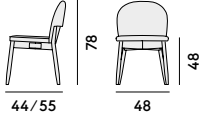
653



655

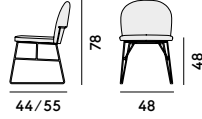
660 Sedia in faggio, imbottita  
/ Chair in beechwood,  
upholstered

Box × 2 pcs: 0.33 m<sup>3</sup>  
Peso/Weight: 7.6 kg



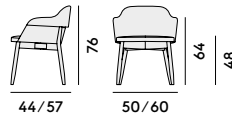
661 Sedia con struttura  
in acciaio, imbottita  
/ Chair with steel frame,  
upholstered

Box × 2 pcs: 0.33 m<sup>3</sup>  
Peso/Weight: 10 kg



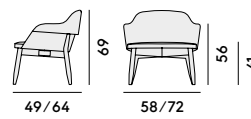
650 Poltroncina in faggio, imbottita  
/ Armchair in beechwood,  
upholstered

Box × 1 pcs: 0.31 m<sup>3</sup>  
Peso/Weight: 9.4 kg



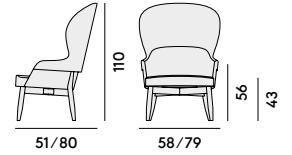
651 Lounge in faggio, imbottita  
/ Lounge chair in beechwood,  
upholstered

Box × 1 pcs: 0.38 m<sup>3</sup>  
Peso/Weight: 11.8 kg



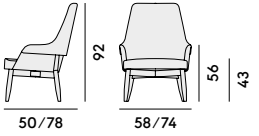
658 Bergère in faggio, imbottita  
/ Bergère in beechwood,  
upholstered

Box × 1 pcs: 0.74 m<sup>3</sup>  
Peso/Weight: 19.8 kg



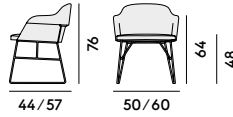
659 Lounge high in faggio, imbottita  
/ High-backed lounge chair in  
beechwood, upholstered

Box × 1 pcs: 0.57 m<sup>3</sup>  
Peso/Weight: 15.5 kg



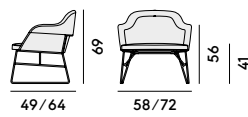
652 Poltroncina con struttura  
in acciaio, imbottita  
/ Armchair with steel frame,  
upholstered

Box × 1 pcs: 0.31 m<sup>3</sup>  
Peso/Weight: 11.8 kg



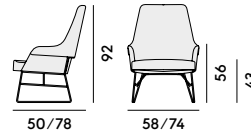
657 Lounge con struttura  
in acciaio, imbottita  
/ Lounge chair with steel  
frame, upholstered

Box × 1 pcs: 0.37 m<sup>3</sup>  
Peso/Weight: 14.2 kg



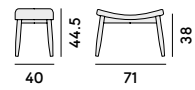
662 Lounge high con struttura  
in acciaio, imbottita  
/ High-backed lounge chair  
with steel frame, upholstered

Box × 1 pcs: 0.55 m<sup>3</sup>  
Peso/Weight: 16.5 kg



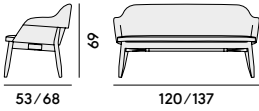
656 Pouf in faggio, imbottito  
/ Pouf in beechwood,  
upholstered

Box × 1 pcs: 0.15 m<sup>3</sup>  
Peso/Weight: 5.1 kg



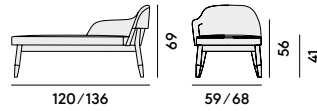
663 Divano in faggio, imbottito  
/ Sofa in beechwood, upholstered

Box × 1 pcs: 0.75 m<sup>3</sup>  
Peso/Weight: 25.2 kg



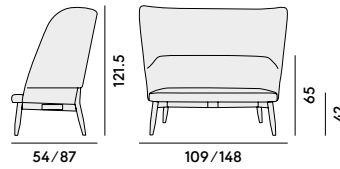
664 Dormeuse in faggio, imbottita  
/ Dormeuse in beechwood, upholstered

Box × 1 pcs: 0.75 m<sup>3</sup>  
Peso/Weight: 22.2 kg



665 Divano Bergère in faggio, imbottito  
/ Bergère sofa in beechwood, upholstered

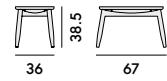
Box × 1 pcs: 1.67 m<sup>3</sup>  
Peso/Weight: 40 kg



658 Tavolo con struttura in faggio  
/ Table with frame in beechwood

Top MDF  
2 Box × 1 pcs: 0.11 m<sup>3</sup>  
Peso/Weight: 6.4 kg

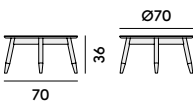
Top Marble  
2 Box × 1 pcs: 0.12 m<sup>3</sup>  
Peso/Weight: 12 kg



654 Tavolo con struttura in faggio  
/ Table with frame in beechwood

Base + Top MDF  
2 Box × 1 pcs: 0.11 m<sup>3</sup>  
Peso/Weight: 9.5 kg

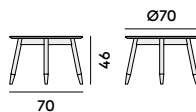
Base + Top Marble  
2 Box × 1 pcs: 0.12 m<sup>3</sup>  
Peso/Weight: 25.5 kg



657 Tavolo con struttura in faggio  
/ Table with frame in beechwood

Base + Top MDF  
2 Box × 1 pcs: 0.14 m<sup>3</sup>  
Peso/Weight: 10 kg

Base + Top Marble  
2 Box × 1 pcs: 0.15 m<sup>3</sup>  
Peso/Weight: 26 kg



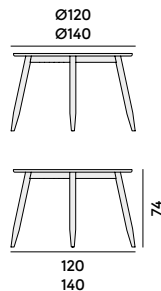
653 Tavolo con struttura in faggio  
/ Table with frame in beechwood

Base + Top MDF Ø120  
2 Box × 1 pcs: 0.27 m<sup>3</sup>  
Peso/Weight: 32.5 kg

Base + Top Marble Ø120  
2 Box × 1 pcs: 0.30 m<sup>3</sup>  
Peso/Weight: 76.5 kg

Base + Top MDF Ø140  
2 Box × 1 pcs: 0.29 m<sup>3</sup>  
Peso/Weight: 39.5 kg

Base + Top Marble Ø140  
2 Box × 1 pcs: 0.33 m<sup>3</sup>  
Peso/Weight: 100 kg



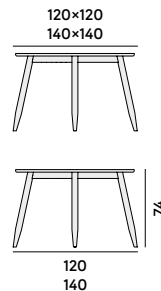
653 Tavolo con struttura in faggio  
/ Table with frame in beechwood

Base + Top MDF 120 × 120  
2 Box × 1 pcs: 0.27 m<sup>3</sup>  
Peso/Weight: 37.5 kg

Base + Top Marble 120 × 120  
2 Box × 1 pcs: 0.30 m<sup>3</sup>  
Peso/Weight: 94.5 kg

Base + Top MDF 140 × 140  
2 Box × 1 pcs: 0.29 m<sup>3</sup>  
Peso/Weight: 47.5 kg

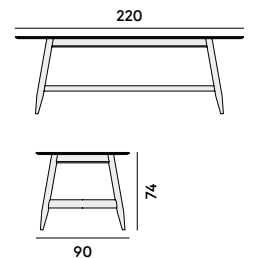
Base + Top Marble 140 × 140  
2 Box × 1 pcs: 0.33 m<sup>3</sup>  
Peso/Weight: 125.5 kg



655 Tavolo con struttura in faggio  
/ Table with frame in beechwood

Base + Top MDF  
2 Box × 1 pcs: 1.20 m<sup>3</sup>  
Peso/Weight: 56 kg

Base + Top Marble  
2 Box × 1 pcs: 1.25 m<sup>3</sup>  
Peso/Weight: 135 kg





690



691



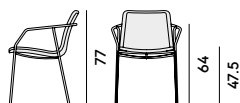
693



694

690 Poltroncina con struttura in acciaio, imbottita / Armchair with steel frame, upholstered

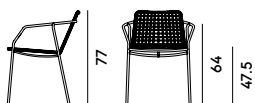
Box × 2 pcs: 0.30 m<sup>3</sup>  
Peso/Weight: 6.7 kg



41/55.5 44/58

691 Poltroncina con struttura in acciaio, intrecciata in cima nautica / Armchair with steel frame, woven in marine rope

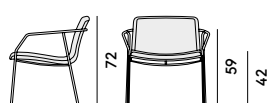
Box × 2 pcs: 0.30 m<sup>3</sup>  
Peso/Weight: 7.2 kg



41/55.5 44/58

693 Lounge con struttura in acciaio, imbottita / Lounge chair with steel frame, upholstered

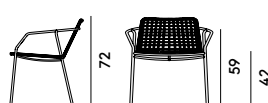
Box × 2 pcs: 0.46 m<sup>3</sup>  
Peso/Weight: 9.0 kg



49/65 59/72.5

694 Lounge con struttura in acciaio, intrecciata in cima nautica / Lounge chair with steel frame, woven in marine rope

Box × 2 pcs: 0.46 m<sup>3</sup>  
Peso/Weight: 8.3 kg



49/65 59/72.5



585



586



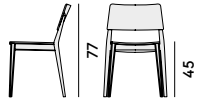
585 Sedia in faggio  
/ Chair in beechwood

Box × 2 pcs: 0.34 m<sup>3</sup>  
Peso/Weight: 6.0 kg

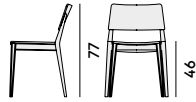


586 Sedia in faggio, con sedile  
imbottito/ Chair in beechwood,  
with upholstered seat

Box × 2 pcs: 0.34 m<sup>3</sup>  
Peso/Weight: 6.5 kg



40/51      40/48



40/51      40/48

## Tango



700



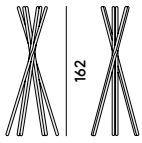
701

700 Appendiabiti in frassino  
/ Coat-stand in ashwood

Box × 1 pcs: 0.77 m<sup>3</sup>  
Peso/Weight: 6.3 kg

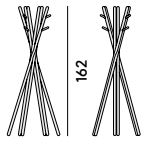
701 Appendiabiti in frassino,  
con agganci supplementari  
/ Coat-stand in ashwood,  
with additional hooks

Box × 1 pcs: 0.77 m<sup>3</sup>  
Peso/Weight: 6.5 kg



66

66



66

66





530



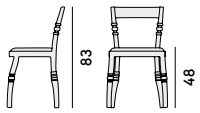
531

530 Sedia in faggio, con sedile imbottito / Chair in beechwood, with upholstered seat

Box × 2 pcs: 0.30 m<sup>3</sup>  
Peso / Weight: 5.2 kg

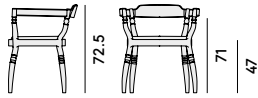
531 Poltroncina in faggio, con sedile imbottito / Armchair in beechwood, with upholstered seat

Box × 1 pcs: 0.30 m<sup>3</sup>  
Peso / Weight: 6.2 kg



47 / 51

48



46 / 51

48 / 62

## Tracy



565



566



567



568



595



596



597



598

565 Sedia in faggio  
/ Chair in beechwood

Box × 2 pcs: 0.30 m<sup>3</sup>  
Peso/Weight: 5.0 kg

566 Sedia in faggio,  
con sedile imbottito  
/ Chair in beechwood,  
with upholstered seat

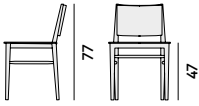
Box × 2 pcs: 0.30 m<sup>3</sup>  
Peso/Weight: 5.5 kg

567 Sedia in faggio, con  
schienale in listelli in massello  
/ Chair in beechwood, with  
backrest in tapered solid rods

Box × 2 pcs: 0.30 m<sup>3</sup>  
Peso/Weight: 5.0 kg

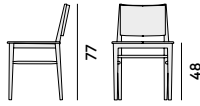
568 Sedia in faggio, con sedile  
imbottito e schienale in listelli  
in massello / Chair in beechwood,  
with upholstered seat and  
backrest in tapered solid rods

Box × 2 pcs: 0.30 m<sup>3</sup>  
Peso/Weight: 5.5 kg



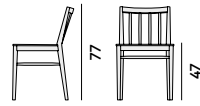
41/50

47



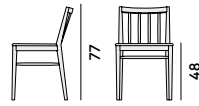
41/50

47



37/50

47



37/50

47

595 Sgabello in faggio  
/ Barstool in beechwood

Box × 1 pcs: 0.29 m<sup>3</sup>  
Peso/Weight: 6.1 kg

596 Sgabello in faggio,  
con sedile imbottito  
/ Barstool in beechwood,  
with upholstered seat

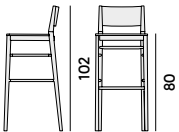
Box × 1 pcs: 0.29 m<sup>3</sup>  
Peso/Weight: 6.6 kg

597 Sgabello in faggio, con  
schienale in listelli in massello  
/ Barstool in beechwood, with  
backrest in tapered solid rods

Box × 1 pcs: 0.29 m<sup>3</sup>  
Peso/Weight: 6.1 kg

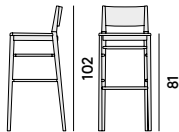
598 Sgabello in faggio, con sedile  
imbottito e schienale in listelli in  
massello / Barstool in beechwood,  
with upholstered seat and  
backrest in tapered solid rods

Box × 1 pcs: 0.29 m<sup>3</sup>  
Peso/Weight: 6.6 kg



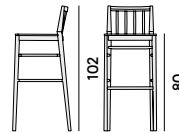
39/49

44



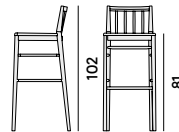
39/49

44



36/49

44



36/49

44



440



441



444

440 Sedia in frassino,  
con sedile imbottito  
/ Chair in ashwood,  
with upholstered seat

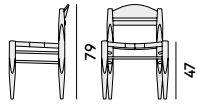
Box × 2 pcs: 0.38 m<sup>3</sup>  
Peso/Weight: 5.4 kg

441 Poltroncina in frassino,  
con sedile imbottito  
/ Armchair in ashwood,  
with upholstered seat

Box × 1 pcs: 0.26 m<sup>3</sup>  
Peso/Weight: 6.7 kg

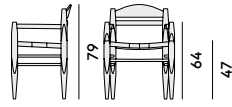
444 Sgabello in frassino,  
con sedile imbottito  
/ Barstool in ashwood,  
with upholstered seat

Box × 1 pcs: 0.31 m<sup>3</sup>  
Peso/Weight: 6.7 kg



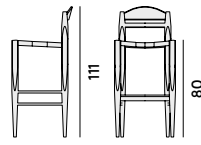
41/50

56



41/50

48/58



42/50

50



603



604



605



606



608



607

603 Poltroncina in faggio / Armchair in beechwood

Box × 1 pcs: 0.34 m<sup>3</sup>  
Peso/Weight: 8.5 kg

604 Poltroncina a dondolo in faggio / Rocking armchair in beechwood

Box × 1 pcs: 0.38 m<sup>3</sup>  
Peso/Weight: 9.2 kg

605 Sedia in faggio / Chair in beechwood

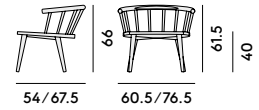
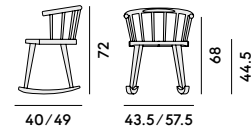
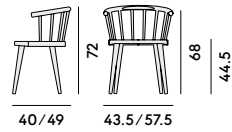
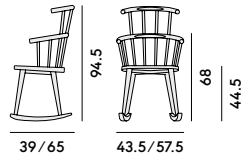
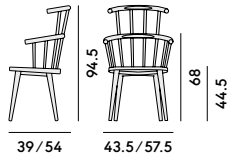
Box × 1 pcs: 0.24 m<sup>3</sup>  
Peso/Weight: 6.5 kg

608 Sedia a dondolo in faggio / Rocking chair in beechwood

Box × 1 pcs: 0.31 m<sup>3</sup>  
Peso/Weight: 7 kg

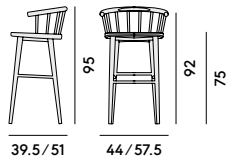
606 Lounge in faggio / Lounge chair in beechwood

Box × 1 pcs: 0.43 m<sup>3</sup>  
Peso/Weight: 11.3 kg



607 Sgabello in faggio / Barstool in beechwood

Box × 1 pcs: 0.34 m<sup>3</sup>  
Peso/Weight: 7.7 kg



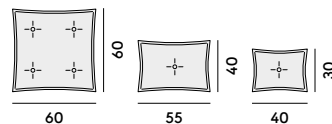
603 Cuscini sedile / Seat cushions  
604  
605  
607  
608

Spessore/Depth: 3.5 cm  
Peso/Weight: 0.3 kg

606 Cuscini sedile / Seat cushions

Spessore/Depth: 3.5 cm  
Peso/Weight: 0.5 kg

Cuscini / Cushions





130



132



134



135

130 Sedia in frassino  
/ Chair in ashwood

Box × 2 pcs: 0.35 m<sup>3</sup>  
Peso/Weight: 7.2 kg



132 Sedia in frassino, con sedile  
imbottito/ Chair in ashwood,  
with upholstered seat

Box × 2 pcs: 0.35 m<sup>3</sup>  
Peso/Weight: 7.9 kg

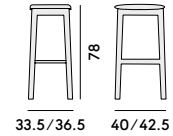
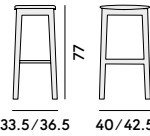
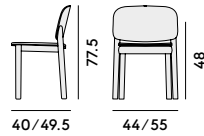
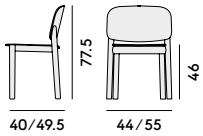


134 Sgabello in frassino  
/ Barstool in ashwood

Box × 1 pcs: 0.14 m<sup>3</sup>  
Peso/Weight: 6 kg

135 Sgabello in frassino, con sedile  
imbottito/ Barstool in ashwood,  
with upholstered seat

Box × 1 pcs: 0.14 m<sup>3</sup>  
Peso/Weight: 6.9 kg



**Алматы** (7273)495-231  
**Ангарск** (3955)60-70-56  
**Архангельск** (8182)63-90-72  
**Астрахань** (8512)99-46-04  
**Барнаул** (3852)73-04-60  
**Белгород** (4722)40-23-64  
**Благовещенск** (4162)22-76-07  
**Брянск** (4832)59-03-52  
**Владивосток** (423)249-28-31  
**Владикавказ** (8672)28-90-48  
**Владимир** (4922)49-43-18  
**Волгоград** (844)278-03-48  
**Вологда** (8172)26-41-59  
**Воронеж** (473)204-51-73  
**Екатеринбург** (343)384-55-89

**Иваново** (4932)77-34-06  
**Ижевск** (3412)26-03-58  
**Иркутск** (395)279-98-46  
**Казань** (843)206-01-48  
**Калининград** (4012)72-03-81  
**Калуга** (4842)92-23-67  
**Кемерово** (3842)65-04-62  
**Киров** (8332)68-02-04  
**Коломна** (4966)23-41-49  
**Кострома** (4942)77-07-48  
**Краснодар** (861)203-40-90  
**Красноярск** (391)204-63-61  
**Курск** (4712)77-13-04  
**Курган** (3522)50-90-47  
**Липецк** (4742)52-20-81

**Магнитогорск** (3519)55-03-13  
**Москва** (495)268-04-70  
**Мурманск** (8152)59-64-93  
**Набережные Челны** (8552)20-53-41  
**Нижний Новгород** (831)429-08-12  
**Новокузнецк** (3843)20-46-81  
**Ноябрьск** (3496)41-32-12  
**Новосибирск** (383)227-86-73  
**Омск** (3812)21-46-40  
**Орел** (4862)44-53-42  
**Оренбург** (3532)37-68-04  
**Пенза** (8412)22-31-16  
**Петрозаводск** (8142)55-98-37  
**Псков** (8112)59-10-37  
**Пермь** (342)205-81-47

**Ростов-на-Дону** (863)308-18-15  
**Рязань** (4912)46-61-64  
**Самара** (846)206-03-16  
**Санкт-Петербург** (812)309-46-40  
**Саратов** (845)249-38-78  
**Севастополь** (8692)22-31-93  
**Саранск** (8342)22-96-24  
**Симферополь** (3652)67-13-56  
**Смоленск** (4812)29-41-54  
**Сочи** (862)225-72-31  
**Ставрополь** (8652)20-65-13  
**Сургут** (3462)77-98-35  
**Сыктывкар** (8212)25-95-17  
**Тамбов** (4752)50-40-97  
**Тверь** (4822)63-31-35

**Тольятти** (8482)63-91-07  
**Томск** (3822)98-41-53  
**Тула** (4872)33-79-87  
**Тюмень** (3452)66-21-18  
**Ульяновск** (8422)24-23-59  
**Улан-Удэ** (3012)59-97-51  
**Уфа** (347)229-48-12  
**Хабаровск** (4212)92-98-04  
**Чебоксары** (8352)28-53-07  
**Челябинск** (351)202-03-61  
**Череповец** (8202)49-02-64  
**Чита** (3022)38-34-83  
**Якутск** (4112)23-90-97  
**Ярославль** (4852)69-52-93

Россия +7(495)268-04-70

Казахстан +7(7172)727-132

Киргизия +996(312)96-26-47

<https://billiani.nt-rt.ru/> || [bnm@nt-rt.ru](mailto:bnm@nt-rt.ru)